

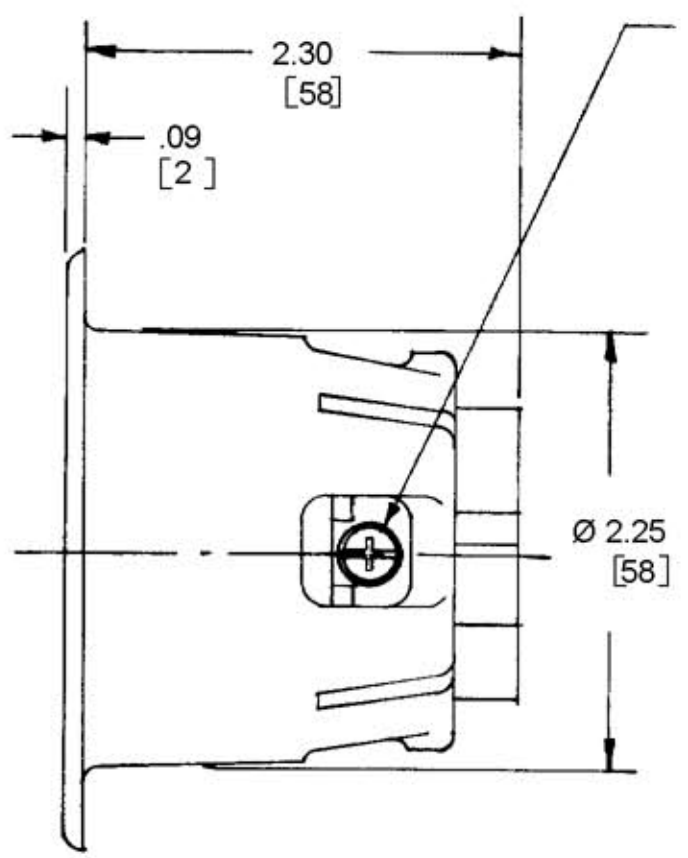
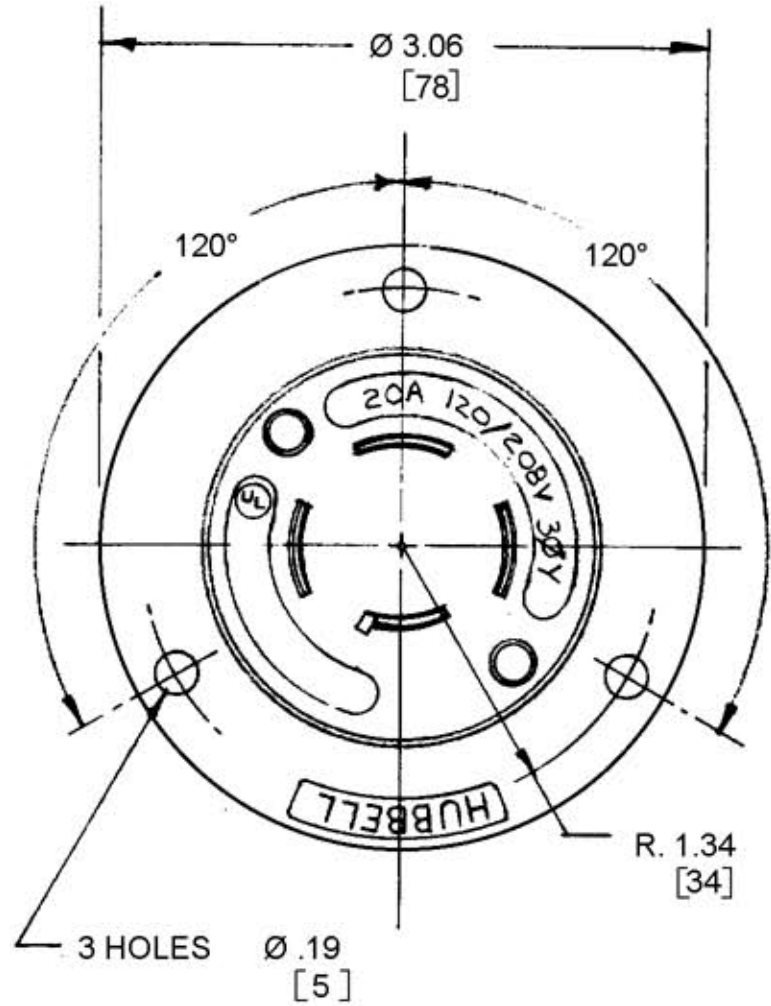
M-6170

4

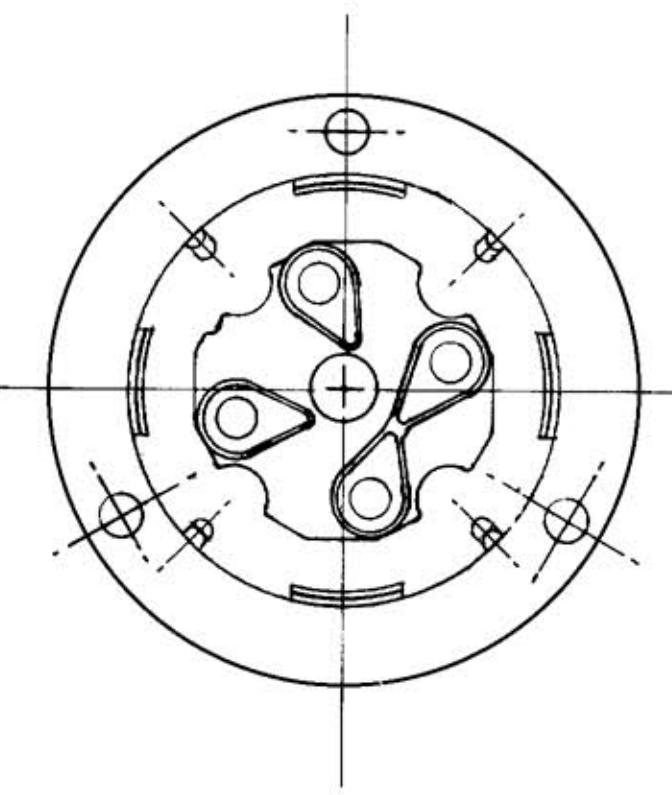
LIST OF PARTS


DESCRIPTION	MATERIAL	FINISH
BLADE HOLDER	NYLON	NATURAL
RETAINER.	POLY CARBONATE	CLEAR
CASING	NYLON	NATURAL
WIRE CLAMP	.080 C.R.S.	NICKEL PLATE
BLADES	.060 BRASS	
TERMINAL SCREWS	BRASS	1- WHITE 3- BRASS

DIMENSION SHEET FOR CAT. NO. SEE TABLE



ALL SCREWS ARE COMBINATION PHILLIPS/SLOTTED ROBERTSON HEAD



CAT. NO.	CONFIGURATION	RATING
HBL7408C	4POLE 4 WIRE 	20A 120/208V 3ØY

REPAIRABLE  NON-REPAIRABLE

B

M-6170

4

4	RETAINER MAT. POLY WAS LEXAN, REVISED SCREW NOTE ADDED HBL TO CAT NO PER DCN 8996 MYA	CJC	10/16/01
3	NUMEROUS CHANGES, SEE RECORD PRINT PER DCN 4118, D39	JZ	6-13-96
2	20A 120/208V 3ØY WAS FOR 150V 10A 600VAC PER DCN 2941 QAS	YUH	9-19-94
1	WIRE CLAMP WAS 2.941 R. DIAM. 2 1/8 WAS 2 3/4 AMPERAGE MARKING	CJC	2-5-90
SYM	REVISIONS	APP	DATE

THE DESIGN AND DIMENSIONS OF THE PRODUCT SHOWN ON THIS DRAWING ARE SUBJECT TO CHANGE WITHOUT NOTICE

TITLE 20A TWISTLOCK INLETS  
NON-NEMA

TOLERANCES UNLESS OTHERWISE SPECIFIED		WIRING DEVICE-KELLEMS HUBBELL INCORPORATED BRIDGEPORT, CT	
FRACTIONS ± 1/64	DECIMALS ± .005	DR. BY J.R.	APP. BY
ANGLES ± 2°		TR. BY	SCALE FULL
		CHK'D BY	DATE 4/10/79