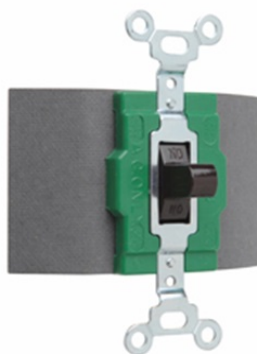


Manual Controller

1228I



Double Pole, Double Throw Switch, 30 amps, 120/277 volts, Ivory.

features & benefits

- Oversize silver alloy contacts for long life and better heat dissipation.
- Side wired terminals accept #14 - #10 AWG copper or copper-clad conductors.
- Fiber terminal insulation barriers standard.
- Can be mounted in standard device boxes or in NEMA 1 sheet steel enclosures.
- Bodies, covers, and toggles molded of durable nylon.
- Single Pole-Double Throw and Double Pole-Double Throw.
- Locking Switches supplied with one 1498-NT key.
- Normally open.



specifications

General Info

Color: Ivory
Type: Maintained Contact
Number Of Poles: 2
Special Features: Two Circuit

Listing Agencies/Third Party Information

CSA Listing Info: Yes
CUL Listing No: No
cULus: No
cURus: No

Federal Spec: No
UL Listing No: Yes
UN SPS C: 39121507
UR: No

Dimensions

Depth U S: 1.469"
Height U S: 3.281"
Weight: 0.29289
Width U S: 1.5"

Technical Information

Amps: 30 Amp
Volts: 120/277VAC
Volts A C: 120/277

Buy American Act Compliance

Country of Origin: MEXICO
Buy American Act Status: Trade Agreement Act Compliant