

35kV	200A Loadbreak Feed-Thru	373FT
------	--------------------------	-------



Features:

- 35kV, 200 Amp Loadbreak Rated
- Uses integral parking stand mount
- Provide extra tap for elbow arrester connection
- Peroxide-cured insulation and jacket
- Rated for 3Ø switching
- Includes black vent ring
- Optional accessories allow by-pass, isolation, testing and grounding

373FT Loadbreak Feed-Thru

Applications:

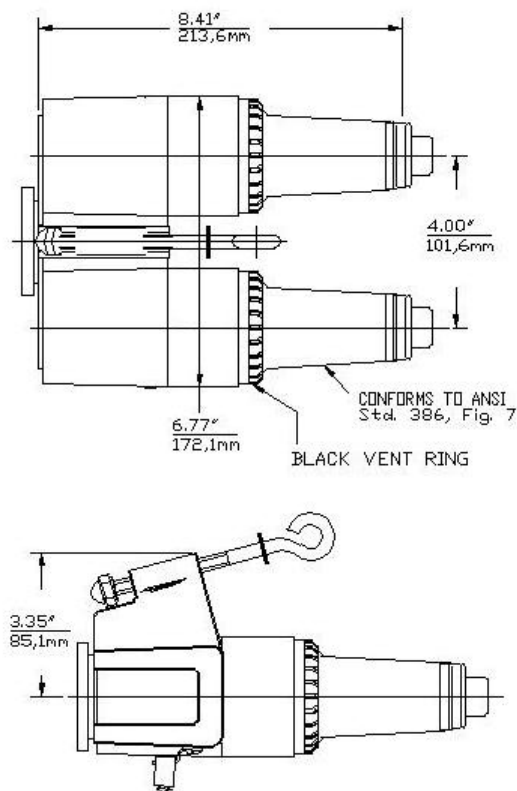
The Elastimold® 373FT feed-thru is a fully shielded, fully submersible insulated connector designed for energized operation. It is suitable for use on 35kV class loadbreak systems. When used in conjunction with 35kV class elbow connectors, the 373FT provides the circuit with the loadbreak junction point. Testing and grounding of the circuit is accomplished when the 373FT is used in conjunction with the 370TR and 370GLR. When used in conjunction with a 375DRG/376DRG, the 373FT can be used to isolate and "dead-end" the circuit. The 373FT is designed to mate with the following Elastimold® products:

- 375LR/376LR elbow connector
- 370TR test rod
- 370GLR grounding elbow
- 375DR/376DRG insulated cap

Ratings:

Meets ANSI/IEEE Standard 386, Latest Revision
 35kV Voltage Class 1Ø and 3Ø
 21.1kV Max Phase-to-Ground – Operating Voltage
 36.6kV Max Phase-to-Phase
 150kV BIL – Impulse Withstand (1.2 x 50 microsecond wave)
 50kV AC – One minute withstand
 103kV DC – 15 minutes withstand
 26kV AC – Corona Extinction @ 3pC sensitivity
 200 Amp – Continuous and Loadbreak
 10kA Sym – 10 Cycles Momentary & Fault Close

35kV	200A Loadbreak Feed-Thru	373FT
------	--------------------------	-------



Ordering Instructions:

To order, specify number **373FT** feed-thru.

Each kit contains the following:

1	Feed-thru body	373FT
2	Protective shipping cap	2701-41
2	Lubricant	82-08
1	Installation Instruction	IS-0079