

BALDOR® • *RELIANCE*

Product Information Packet

CESSWDM3710T

7.5HP, 1770RPM, 3PH, 60HZ, 213TC, 3740M, TEFC

Part Detail							
Revision:	V	Status:	PRD/A	Change #:		Proprietary:	No
Type:	AC	Elec. Spec:	37WGT864	CD Diagram:	CD0005	Mfg Plant:	
Mech. Spec:	37J639	Layout:	37LYJ639	Poles:	04	Created Date:	07-20-2006
Base:	RG	Eff. Date:	09-21-2017	Leads:	9#14		

Specs			
Catalog Number:	CESSWDM3710T	Inverter Code:	Inverter Ready
Enclosure:	TEFC	KVA Code:	J
Frame:	213TC	Lifting Lugs:	Standard Lifting Lugs
Frame Material:	Stainless Steel	Locked Bearing Indicator:	Locked Bearing
Output @ Frequency:	7.500 HP @ 60 HZ	Motor Lead Quantity/Wire Size:	9 @ 14 AWG
Synchronous Speed @ Frequency:	1800 RPM @ 60 HZ	Motor Lead Exit:	Ko Box
Voltage @ Frequency:	230.0 V @ 60 HZ	Motor Lead Termination:	Flying Leads
	460.0 V @ 60 HZ	Motor Type:	3740M
XP Class and Group:	None	Mounting Arrangement:	F1
XP Division:	Not Applicable	Power Factor:	81
Agency Approvals:	UR	Product Family:	Wash Down All Stainless Steel
	CSA	Pulley End Bearing Type:	Sealed Bearing
Auxillary Box:	No Auxillary Box	Pulley Face Code:	C-Face
Auxillary Box Lead Termination:	None	Pulley Shaft Indicator:	Standard
Base Indicator:	Rigid	Rodent Screen:	None
Bearing Grease Type:	Polyrex EM (-20F +300F)	RoHS Status:	ROHS COMPLIANT
Blower:	None	Shaft Extension Location:	Pulley End
Current @ Voltage:	19.000 A @ 230.0 V	Shaft Ground Indicator:	No Shaft Grounding

	9.500 A @ 460.0 V	Shaft Rotation:	Reversible
Design Code:	A	Shaft Slinger Indicator:	No Slinger
Drip Cover:	No Drip Cover	Speed Code:	Single Speed
Duty Rating:	CONT	Motor Standards:	NEMA
Electrically Isolated Bearing:	Not Electrically Isolated	Starting Method:	Direct on line
Feedback Device:	NO FEEDBACK	Thermal Device - Bearing:	None
Front Face Code:	Standard	Thermal Device - Winding:	None
Front Shaft Indicator:	None	Vibration Sensor Indicator:	No Vibration Sensor
Heater Indicator:	No Heater	Winding Thermal 1:	None
Insulation Class:	F	Winding Thermal 2:	None

Nameplate NP1953C01											
CAT.NO.	CESSWDM3710T										
SPEC.	37J639T864G1										
HP	7.5										
VOLTS	230/460										
AMP	19/9.5										
RPM	1770										
FRAME	213TC					HZ	60			PH	3
SER.F.	1.15			CODE	J		DES	A		CLASS	F
NEMA-NOM-EFF	91.7				PF	81					
RATING	40C AMB-CONT										
CC	010A					USABLE AT 208V					
DE	6307				ODE	6206					
ENCL	TEFC			SN							

AC Induction Motor Performance Data

Record # 17300 - Typical performance - not guaranteed values

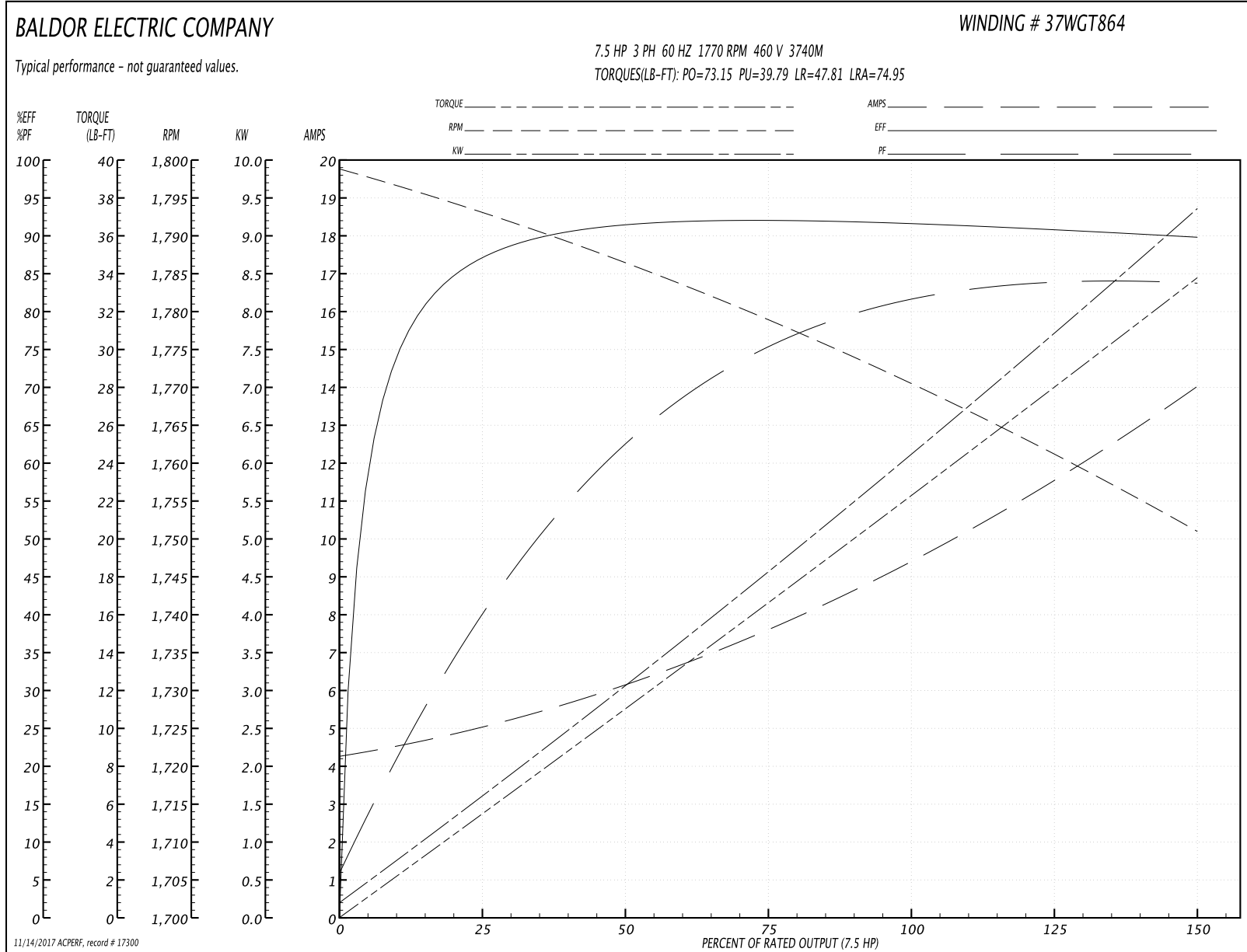
Winding: 37WGT864-R001	Type: 3740M	Enclosure: TEFC
-------------------------------	--------------------	------------------------

Nameplate Data				460 V, 60 Hz: High Voltage Connection	
Rated Output (HP)	7.5			Full Load Torque	22.36 LB-FT
Volts	230/460			Start Configuration	direct on line
Full Load Amps	19.0/9.5			Breakdown Torque	73.15 LB-FT
R.P.M.	1770			Pull-up Torque	39.79 LB-FT
Hz	60	Phase	3	Locked-rotor Torque	47.81 LB-FT
NEMA Design Code	A	KVA Code	J	Starting Current	74.95 A
Service Factor (S.F.)	1.15			No-load Current	4.4 A
NEMA Nom. Eff.	91.7	Power Factor	81	Line-line Res. @ 25°C	1.27 Ω
Rating - Duty	40C AMB-CONT			Temp. Rise @ Rated Load	69°C
S.F. Amps				Temp. Rise @ S.F. Load	85°C
				Locked-rotor Power Factor	36.4
				Rotor inertia	0.984 LB-FT ²

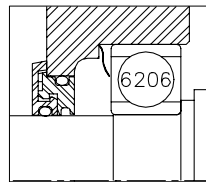
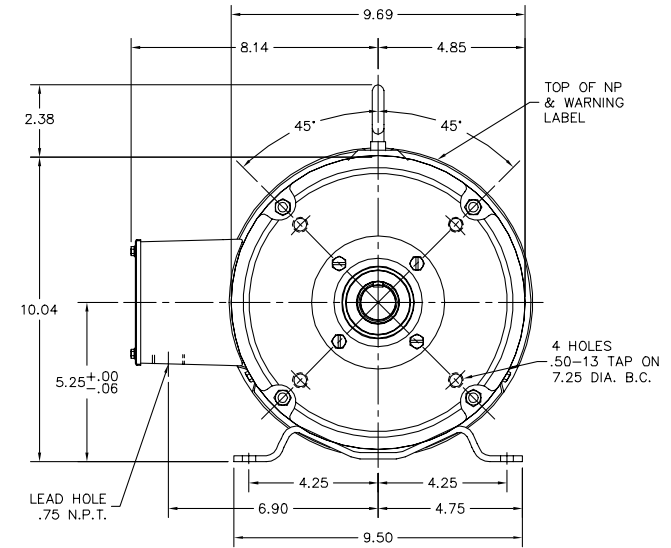
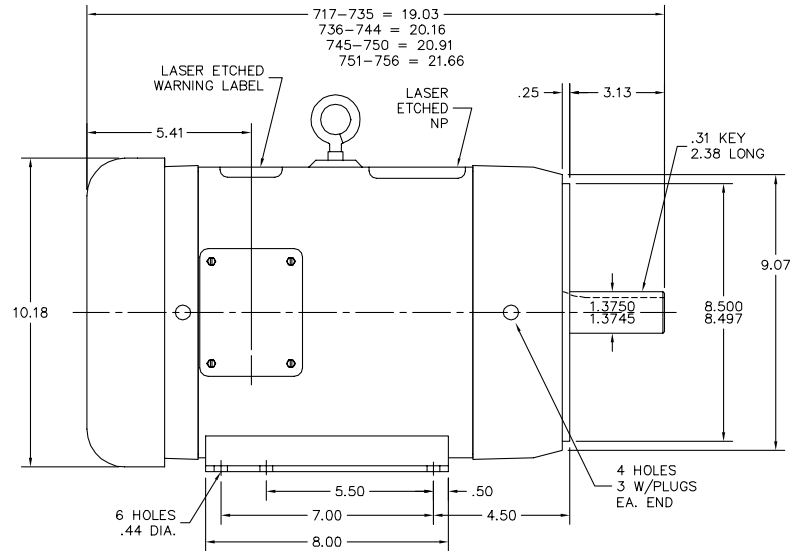
Load Characteristics 460 V, 60 Hz, 7.5 HP

% of Rated Load	25	50	75	100	125	150	S.F.
Power Factor	42	64	75	81	83	85	82
Efficiency	86.6	90.9	92	91.9	90.8	89.7	91.4
Speed	1793	1786	1779	1771	1761	1751	1764
Line amperes	4.88	6.02	7.67	9.52	11.62	13.91	10.7

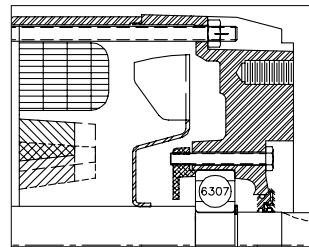
Performance Graph at 460V, 60Hz, 7.5HP Typical performance - Not guaranteed values



37LYJ639



FRONT END DETAIL



PULLEY END DETAIL

CUSTOMER IS RESPONSIBLE FOR DETERMINING THAT MOTOR PERFORMANCE IS SUITABLE IN THE APPLICATION.

REV. DESC: NEW	VERSION: 00	TDR: 000000402493
REV. LTR: -	REVISED: 12:58:39 07/19/2006	BY: ENBRYPO
FILE: \AAA\00138\592		
MTL: -		

BALDOR ELECTRIC Co.

STD HOR 213-5TC TEFC 37M WD4 W/LASER ETCHED BAND

37LYJ639

CD0005

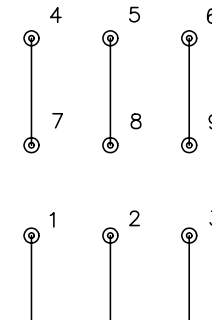


LOW VOLTAGE
(2Y)



LINE

HIGH VOLTAGE
(1Y)



LINE

NOTES:

1. INTERCHANGE ANY TWO LINE LEADS TO REVERSE ROTATION.
2. OPTIONAL THERMOSTATS ARE PROVIDED WHEN SPECIFIED.
3. ACTUAL NUMBER OF INTERNAL PARALLEL CIRCUITS MAY BE A MULTIPLE OF THOSE SHOWN ABOVE.
4. LEAD COLORS ARE OPTIONAL. LEADS MUST ALWAYS BE NUMBERED AS SHOWN.

REV. DESC: REVISE TO SHOW OPTIONAL COLORS			
REV. LTR: E	BY: JLP	REVISED: 01/19/99 10:15	TDR: 0171435
90000		FILE: AAA00005140	MDL: -
		MTL: -	

BALDOR ELECTRIC Co.

3PH, DV, 9 LEADS

CD0005