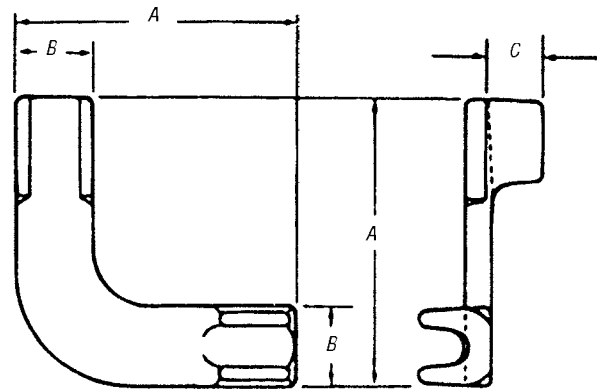


## EZGround™ Compression Grounding Connectors

For copper cable-to-cableground-grid connections.

### Type GRD — Cable-to-Cable Connector

- Cast of high-conductivity bronze alloy
- Suitable for direct burial

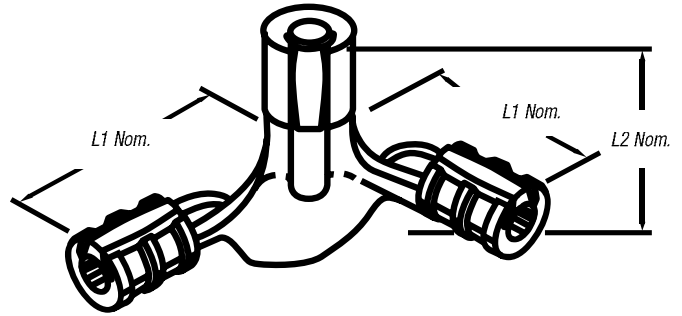


CAT. NO.	CONDUCTOR SIZE								GROUND ROD	INSTALLATION INFORMATION			DIMENSIONS (IN.)		
	MAIN				TAP					HYD. TOOL	DIE	NO. CRIMPS	A	B	C
	MAX.	MIN.	MAX. (MM <sup>2</sup> )	MIN. (MM <sup>2</sup> )	MAX.	MIN.	MAX. (MM <sup>2</sup> )	MIN. (MM <sup>2</sup> )							
GRD2	1	2	42.4	33.6	1	2	42.4	33.6	—	TBM14M	B09CH	1	2½	1¼	1¼
GRD20	2/0	1/0	67.4	53	2/0	1/0	67.4	53	—	TBM14M	B10CH	1	3	1¼	7/8
GRD420	250 kcmil	4/0	126.6	107	2/0	1/0	67.4	53	¾	TBM14M	B12CH	2	3¾	1¼	1¼
GRD40	250 kcmil	4/0	126.6	107	250 kcmil	4/0	126.6	107	¾	TBM14M	B12CH	2	3¾	1¼	1¼

## EZGround™ Compression Grounding Connectors

For connecting perpendicular runs of stranded copper cable to ground rod.

### Two Cables-to-Ground Rod Connector — Heavy-Duty Cast Copper<sup>††</sup>



Two Cables-to-Ground Rod Connector — Heavy-Duty Cast Copper<sup>††</sup>

**DB**

CAT. NO.	CABLE SIZE		GROUND ROD DIA.	TBM15I DIE FOR CABLE CODE	OVERALL DIM. (IN.)		TBM15I DIE FOR GROUND ROD CODE
	MAIN	TAP			L1	L2	
53065-58GR	250 or 4/0	250 or 4/0	5/8" & 1/2"	87H	4 <sup>15</sup> / <sub>16</sub>	3/4	87H
53065-34GR	250 or 4/0	250 or 4/0	3/4"	87H	4 <sup>15</sup> / <sub>16</sub>	3/4	106H

Installs with Hydraulic Tools with hex crimp dies.  
<sup>††</sup> Does not meet IEEE 837.

### Copperweld® Conductors & Rebar — for Use with Cast Copper Connections

CABLE SIZE	REINFORCING ROD SIZE	COPPERWELD® CONDUCTOR SIZE
#2, #1 AWG	—	(3) #8 or (3) #6
1/0, 2/0 AWG	#3	3/8 — (7) #8 or 1/4 — (7) #7
4/0 AWG, 250 kcmil	#4	7/16 — (19) #9 or (7) #5
300–350 kcmil	#5	2 <sup>1</sup> / <sub>32</sub> — (19) #8 or 3/8 — (7) #4
500 kcmil	#6	13/16 — (19) #6

Copperweld is a registered trademark of Copperweld Corporation.  
 UL® Listed for use with cast copper connectors.

## EZGround™ Compression Grounding Connectors

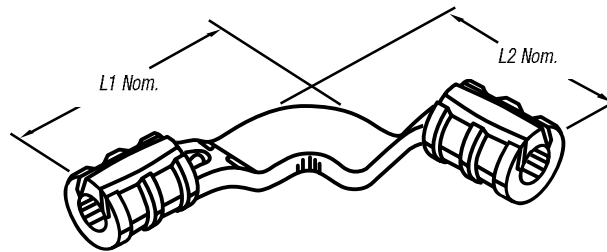
### Grounding Grid Connectors — Heavy-Duty Cast Copper<sup>††</sup>



53055



53065



**DB**

CAT. NO.	ROD TO CABLE RANGE		CABLE TO CABLE RANGE		ROD TO CABLE INSTALLING DIE CODE FOR TBM14M, 13100A OR TBM15I		OVERALL DIMENSION (IN.)	
	ROD SIZE (IN.)	CABLE RANGE	MAIN	BRANCH	ROD BARREL	CABLE BARREL	L1	L2
53055	—	—	1/0–2/0 AWG	1/0–2/0 AWG	—	66	3/8	3/8
53059 <sup>†</sup>	1/2–5/8	#2–#1 AWG	4/0 AWG–250 kcmil	#2–#1 AWG	87H	54H	4 <sup>5</sup> / <sub>32</sub>	4 <sup>1</sup> / <sub>16</sub>
53060 <sup>†</sup>	1/2–5/8	1/0–2/0 AWG	4/0 AWG–250 kcmil	1/0–2/0 AWG	87H	87H	4 <sup>1</sup> / <sub>16</sub>	4 <sup>1</sup> / <sub>16</sub>
53065 <sup>†</sup>	1/2–5/8	4/0 AWG–250 kcmil	4/0 AWG–250 kcmil	4/0 AWG–250 kcmil	87H	87H	4 <sup>1</sup> / <sub>16</sub>	4 <sup>1</sup> / <sub>16</sub>
53069 <sup>†</sup>	3/4	1/0–2/0 AWG	300–350 kcmil	1/0–2/0 AWG	106H	66	4 <sup>19</sup> / <sub>32</sub>	4 <sup>1</sup> / <sub>32</sub>
53071 <sup>†</sup>	3/4	4/0 AWG–250 kcmil	300–350 kcmil	4/0 AWG–250 kcmil	106H	106H	5 <sup>1</sup> / <sub>4</sub>	4 <sup>2</sup> / <sub>32</sub>
53073 <sup>†</sup>	3/4	1/0–2/0 AWG	500 kcmil	1/0–2/0 AWG	125H*	66	4 <sup>1</sup> / <sub>16</sub>	4 <sup>1</sup> / <sub>8</sub>
53075 <sup>†</sup>	1	4/0 AWG–250 kcmil	500 kcmil	4/0 AWG–250 kcmil	125H*	87H	6 <sup>9</sup> / <sub>16</sub>	5
53080 <sup>†</sup>	1	500 kcmil	500 kcmil	500 kcmil	125H*	125H*	5 <sup>3</sup> / <sub>16</sub>	5 <sup>3</sup> / <sub>16</sub>

Cat. No. 15500 adapter is required for all 15500 Series dies, not for 15600 Series.

<sup>†</sup> Ground rods 4/0–250 wire barrels suitable for 1/2" and 5/8" rod.

500 kcmil wire barrels suitable for 1" rods.

300–500 kcmil wire barrels suitable for 3/4" rods.

Hydraulic tools only.

<sup>††</sup> Does not meet IEEE 837.

\* 125H die for 15-ton tool only.