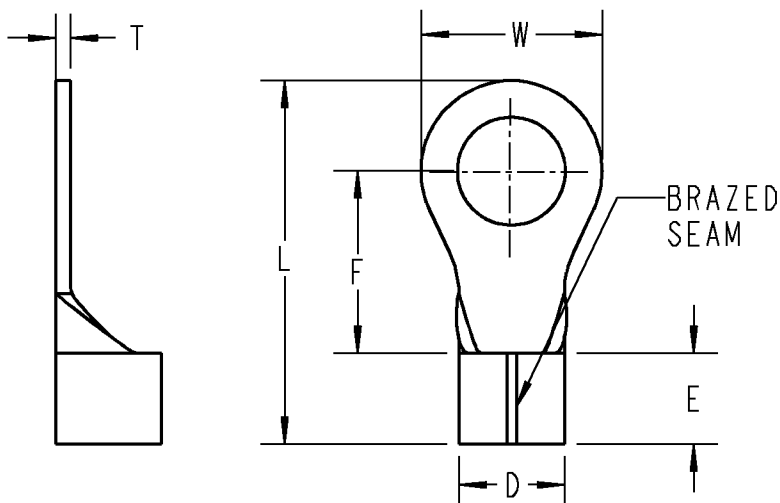




T&B Sta-Kon



MATERIAL: COPPER
 BRAZED SEAM
 CHAMFERED BARREL
 INTERNAL BARREL SERRATIONS
 INSTALLING TOOLS: TBM6/TBM6S
 * NOT UL, CSA LISTED

ALL DIMENSIONS ARE APPROXIMATE, FOR REFERENCE ONLY.

CATALOG	BOLT	WIRE RANGE	W	T	L	E	F	D
K8-8R-D	#8	8 AWG	0.315	0.047	0.846	0.337	0.366	0.283
K8-10R-D	#10		0.346		0.937		0.429	
K8-14R-D	1/4"		0.472		0.937		0.366	
K8-516R-D	5/16"		0.591		1.161		0.543	
K8-38R-D	3/8"		0.591		1.161		0.543	
K8-12R-D	1/2"		0.787		1.319		0.591	
K6-10R-D	#10	6 AWG	0.472	0.059	1.173	0.413	0.524	0.354
K6-14R-D	1/4"		0.472		1.173		0.524	
K6-516R-D	5/16"		0.630		1.280		0.559	
K6-38R-D	3/8"		0.630		1.280		0.559	
K6-12R-W	1/2"		0.866		1.614		0.780	
K4-8R-W*	#8	4 AWG	0.481	0.067	1.307	0.472	0.594	0.453
K4-10R-W*	#10		0.866		1.307		0.594	
K4-14R-W*	1/4"		0.650		1.319		0.531	
K4-516R-W*	5/16"		0.650		1.319		0.531	
K4-38R-W*	3/8"		0.650		1.319		0.531	
K4-12R-CC*	1/2"		0.866		1.661		0.531	
K2-10R-CC*	#10	2 AWG	0.602	0.071	1.535	0.551	0.685	0.524
K2-14R-CC*	1/4"		0.602		1.535		0.685	
K2-516R-CC*	5/16"		0.602		1.535		0.685	
K2-38R-CC*	3/8"		0.602		1.535		0.685	
K2-12R-CC*	1/2"		0.866		1.681		0.697	

GENERAL NOTES

- ALL DIMENSIONS ARE FOR REFERENCE ONLY.
- DIMENSIONS IN BRACKETS [] ARE IN METRIC UNITS.

REVISIONS

** SEE ERN (****) FOR APPROVAL SIGNATURES & RELEASE DATE.
 PROJECT NO: ****

Thomas & Betts
 www.tnb.com

DESCRIPTION:

NON-INSULATED RING TERMINALS

ORIGINAL PROJECT NO / (ERN NO)

TM401330 / (2007574)

SHEET NO:

1 OF 1

REV. NO:

DRAWING NO:

WSD-000320