

BALDOR® • *RELIANCE*

Product Information Packet

CSWDM3554T

1.5HP, 1755RPM, 3PH, 60HZ, 145TC, 3526M, TENV

Part Detail							
Revision:	L	Status:	INA/A	Change #:		Proprietary:	No
Type:	AC	Elec. Spec:	35WGP689	CD Diagram:	CD0005	Mfg Plant:	
Mech. Spec:	35SS621	Layout:	35LYSS621	Poles:	04	Created Date:	11-21-2011
Base:	RG	Eff. Date:	03-08-2016	Leads:	9#18		

Specs			
Catalog Number:	CSWDM3554T	Heater Indicator:	No Heater
Enclosure:	TENV	Insulation Class:	F
Frame:	145TC	Inverter Code:	Not Inverter
Frame Material:	Stainless Steel	KVA Code:	M
Output @ Frequency:	1.500 HP @ 60 HZ	Lifting Lugs:	No Lifting Lugs
Synchronous Speed @ Frequency:	1800 RPM @ 60 HZ	Locked Bearing Indicator:	Locked Bearing
Voltage @ Frequency:	208.0 V @ 60 HZ	Motor Lead Quantity/Wire Size:	9 @ 18 AWG
	230.0 V @ 60 HZ	Motor Lead Exit:	Ko Box
	460.0 V @ 60 HZ	Motor Lead Termination:	Flying Leads
XP Class and Group:	None	Motor Type:	3526M
XP Division:	Not Applicable	Mounting Arrangement:	F1
Agency Approvals:	UR	Power Factor:	72
	CSA	Product Family:	Wash Down Paint Free
Auxillary Box:	No Auxillary Box	Pulley End Bearing Type:	Sealed Bearing
Auxillary Box Lead Termination:	None	Pulley Face Code:	C-Face
Base Indicator:	Rigid	Pulley Shaft Indicator:	Standard
Bearing Grease Type:	Polyrex EM (-20F +300F)	Rodent Screen:	None
Blower:	None	Shaft Extension Location:	Pulley End

Current @ Voltage:	2.250 A @ 460.0 V	Shaft Ground Indicator:	No Shaft Grounding
	4.500 A @ 230.0 V	Shaft Rotation:	Reversible
	4.900 A @ 208.0 V	Shaft Slinger Indicator:	No Slinger
Design Code:	B	Speed Code:	Single Speed
Drip Cover:	No Drip Cover	Motor Standards:	NEMA
Duty Rating:	CONT	Starting Method:	Direct on line
Electrically Isolated Bearing:	Not Electrically Isolated	Thermal Device - Bearing:	None
Feedback Device:	NO FEEDBACK	Thermal Device - Winding:	None
Front Face Code:	Standard	Vibration Sensor Indicator:	No Vibration Sensor
Front Shaft Indicator:	None	Winding Thermal 1:	None
		Winding Thermal 2:	None

Nameplate NP1496L										
CAT.NO.	CSWDM3554T									
SPEC.	35SS621P689H1									
HP	1.5									
VOLTS	208-230/460									
AMP	4.9-4.5/2.25									
RPM	1755									
FRAME	145TC				HZ	60			PH	3
SER.F.	1.15		CODE	M	DES	B		CLASS	F	
NEMA-NOM-EFF	85.5		PF	72						
RATING	40C AMB-CONT									
CC									USABLE AT 208V	
DE	6205				ODE	6203				
ENCL	TENV		SN							

AC Induction Motor Performance Data

Record # 48528 - Typical performance - not guaranteed values

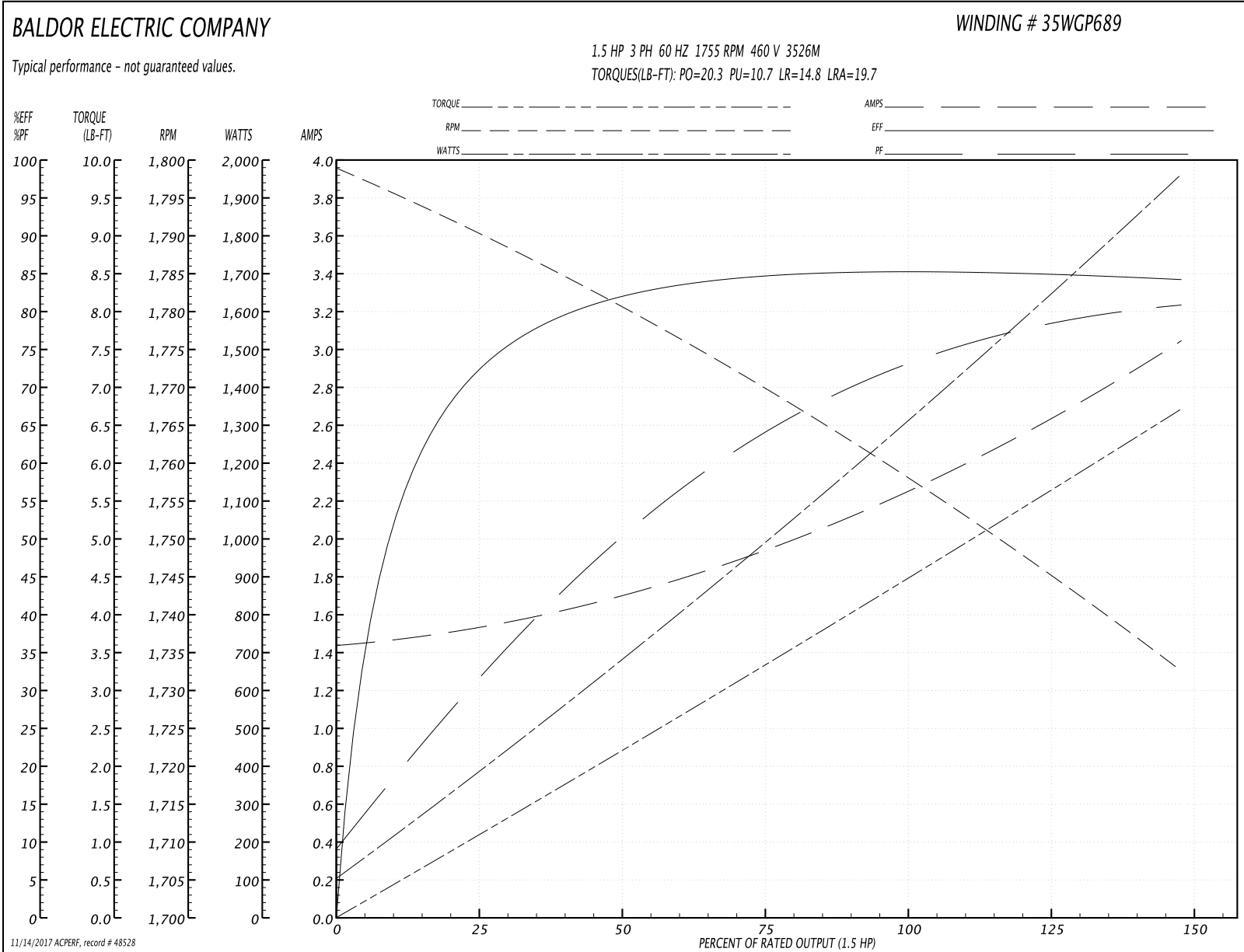
Winding: 35WGP689-R001	Type: 3526M	Enclosure: TENV
-------------------------------	--------------------	------------------------

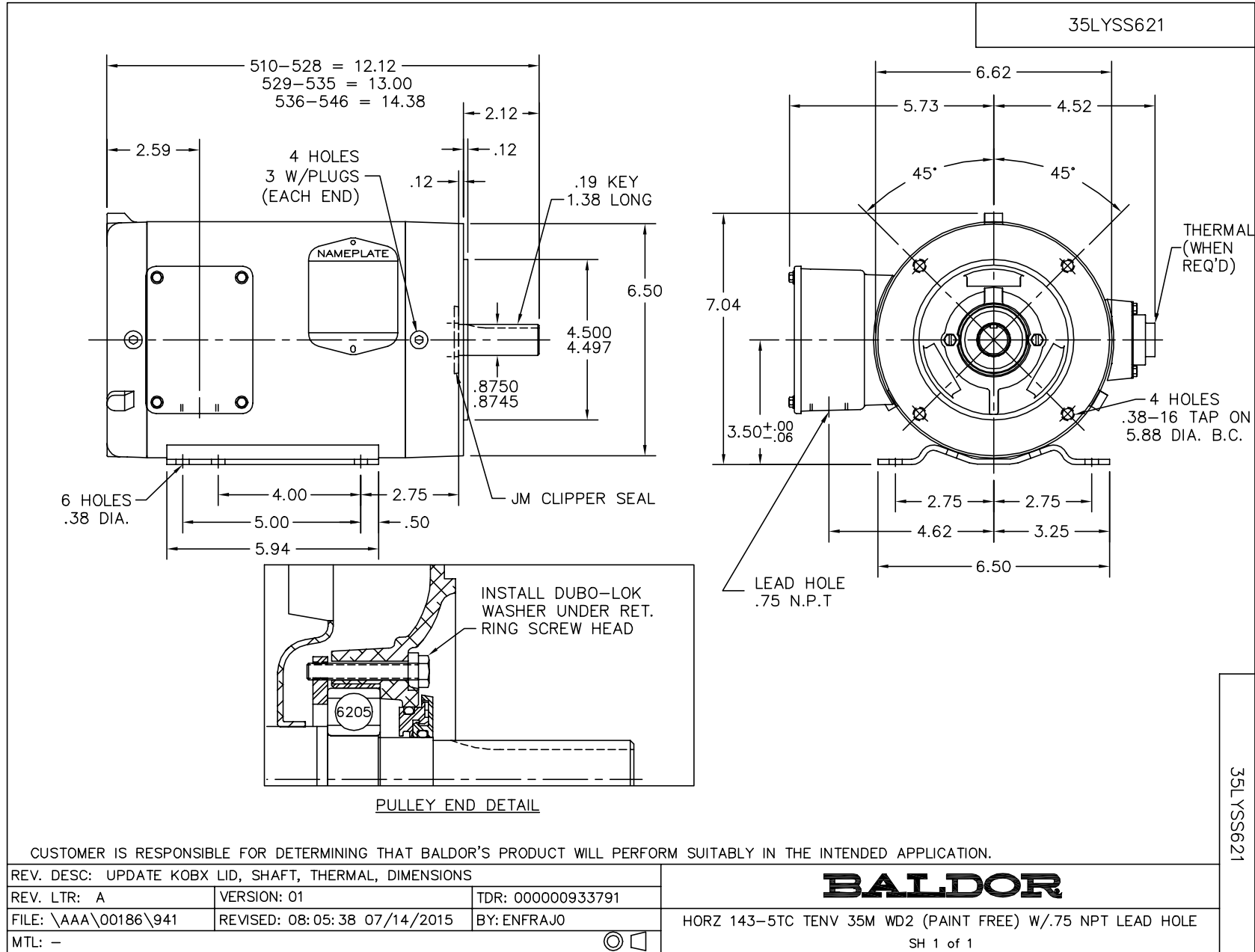
Nameplate Data				460 V, 60 Hz: High Voltage Connection	
Rated Output (HP)	1.5			Full Load Torque	4.41 LB-FT
Volts	208-230/460			Start Configuration	direct on line
Full Load Amps	4.9-4.5/2.25			Breakdown Torque	20.3 LB-FT
R.P.M.	1755			Pull-up Torque	10.7 LB-FT
Hz	60	Phase	3	Locked-rotor Torque	14.8 LB-FT
NEMA Design Code	B	KVA Code	M	Starting Current	19.7 A
Service Factor (S.F.)	1.15			No-load Current	1.45 A
NEMA Nom. Eff.	85.5	Power Factor	72	Line-line Res. @ 25°C	8.71 Ω
Rating - Duty	40C AMB-CONT			Temp. Rise @ Rated Load	82°C
S.F. Amps				Temp. Rise @ S.F. Load	94°C
				Locked-rotor Power Factor	49.6
				Rotor inertia	0.154 LB-FT ²

Load Characteristics 460 V, 60 Hz, 1.5 HP

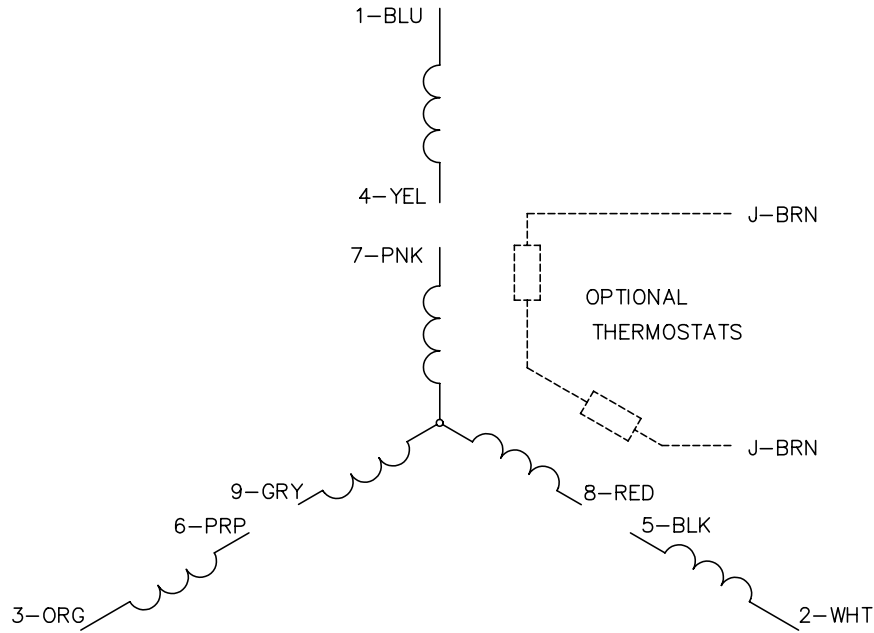
% of Rated Load	25	50	75	100	125	150	S.F.
Power Factor	31	49	63	72	78	81	76
Efficiency	71.3	81.4	84.5	85.4	85.2	84.1	85.3
Speed	1791	1781	1770	1759	1747	1732	1752
Line amperes	1.51	1.68	1.93	2.24	2.61	3.04	2.46

Performance Graph at 460V, 60Hz, 1.5HP Typical performance - Not guaranteed values

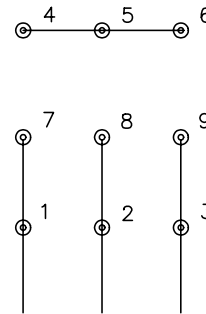




CD0005

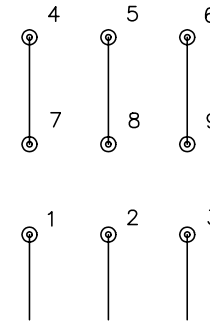


LOW VOLTAGE
(2Y)



LINE

HIGH VOLTAGE
(1Y)



LINE

NOTES:

1. INTERCHANGE ANY TWO LINE LEADS TO REVERSE ROTATION.
2. OPTIONAL THERMOSTATS ARE PROVIDED WHEN SPECIFIED.
3. ACTUAL NUMBER OF INTERNAL PARALLEL CIRCUITS MAY BE A MULTIPLE OF THOSE SHOWN ABOVE.
4. LEAD COLORS ARE OPTIONAL. LEADS MUST ALWAYS BE NUMBERED AS SHOWN.

REV. DESC: REVISE TO SHOW OPTIONAL COLORS			
REV. LTR: E	BY: JLP	REVISED: 01/19/99 10:15	TDR: 0171435
9000D		FILE: AAA00005140	MDL: -
		MTL: -	

BALDOR ELECTRIC Co.

3PH, DV, 9 LEADS

CD0005