

Issue Date: 10/04/2012
Page: 1 of 2
File: PSS-K655BVS

| | | | |
|---------|--|----------------|---------|
| 15/25kV | 600A Deadbreak Vault Stretcher Housing | w/o Test Point | K655BVS |
|---------|--|----------------|---------|



Features:

- Fully rated 15/25kV, 600 Amp Deadbreak Vault Stretcher
- Fully shielded, fully submersible molded rubber housing
- 100% peroxide-cured construction includes insulation and conductive EPDM materials
- Can be easily connected or disconnected using standard hand tools and equipment in a de-energized state
- Optional accessories allow visible external separation, by-pass, isolation, dead-ending, grounding, and testing as well as adding taps, surge arrestors, and fault current indicators

K655BVS Vault Stretcher Housing

Applications:

The K655BVS vault stretcher housing is a component of the Vault Stretcher product line. The K655BVS can be mated with the following components:

- K651CP
- K650BIP
- K650RTP
- K650RTW
- K650S1
- K650T1
- K650JX
- K650ETP

Ratings:

Meets ANSI/IEEE Standard 386, Latest Revision

For 15kV Voltage Class:

8.3kV Max Phase-to-Ground – Operating Voltage
14.4kV Max Phase-to-Phase
95kV BIL – Impulse Withstand (1.2 x 50 microsecond wave)
34kV AC – One minute withstand
53kV DC – 15 minutes withstand
11kV AC – Corona Extinction @ 3pC sensitivity
600 Amp – Continuous
25kA Sym – 10 Cycles Momentary

For 28kV Voltage Class:

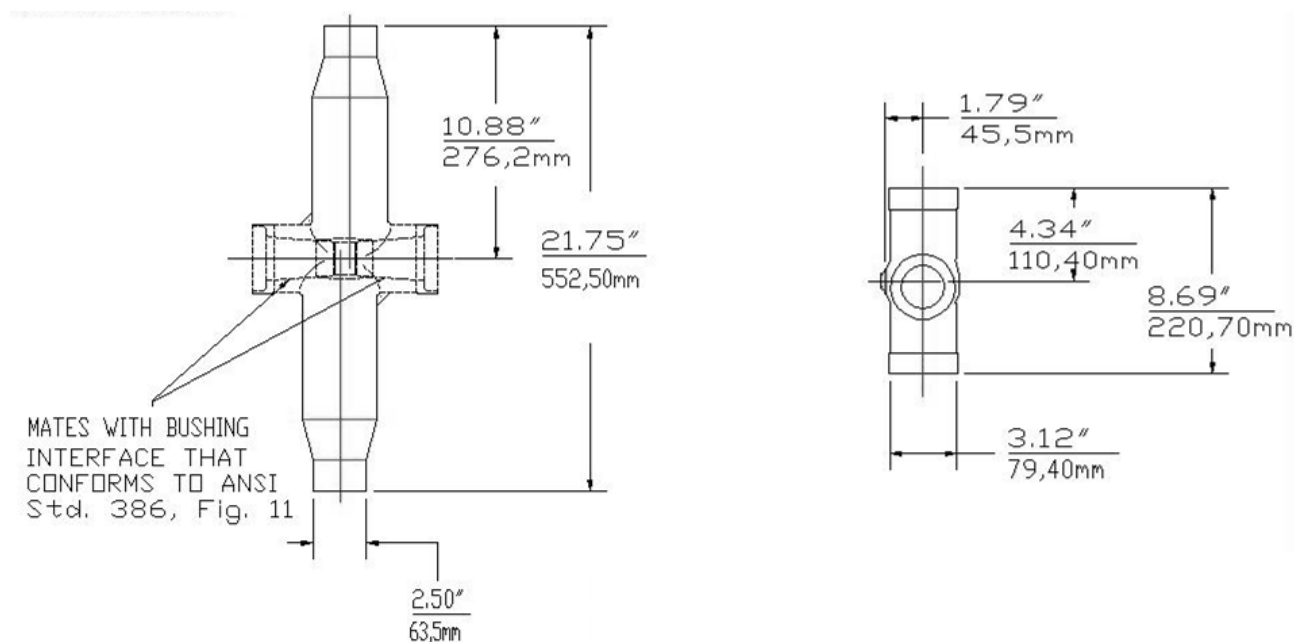
16.2kV Max Phase-to-Ground – Operating Voltage
28kV Max Phase-to-Phase
140kV BIL – Impulse Withstand (1.2 x 50 microsecond wave)
45kV AC – One minute withstand
84kV DC – 15 minutes withstand
21.5kV AC – Corona Extinction @ 3pC sensitivity
600 Amp – Continuous
25kA Sym – 10 Cycles Momentary

Issue Date: 10/04/2012

Page: 2 of 2

File: PSS-K655BVS

| | | | |
|---------|---|----------------|---------|
| 15/25kV | 600A Deadbreak Vault Stretcher Housing | w/o Test Point | K655BVS |
|---------|---|----------------|---------|



Ordering Instructions:

To order 15/25kV, 600A vault stretcher, specify **K655BVS**.

Each kit contains the following:

| | | |
|---|--------------------------|---------|
| 1 | Vault stretcher housing | K655BVS |
| 6 | Tube, lubricant | 82-08 |
| 1 | Stud | 650VSA |
| 1 | Installation Instruction | IS-0356 |

Example:

The ordering number for a 600 Amp vault stretcher is K655BVS.