

Electrical Interlocks

Hoffman Enclosures Inc.

2100 Hoffman Way
Anoka, MN 55303-1745
(763) 422-2211

www.hoffmanonline.com

Pentair Electronic Packaging

170 Commerce Drive
Warwick, RI 02886
(401) 732-3770

www.pentair-ep.com

Mexico

Hoffman Enclosures Mexico
Federico T. de la Chica No. 8 Piso 4 A
Circuito Comercial Plaza Satélite
Ciudad Satélite,
Naucalpan, México C.P. 53100
011-52-55-5393-8263

Canada

Hoffman-Schroff
111 Grangeway Avenue, Suite 504
Scarborough, Ontario M1H 3E9
(416) 289-2770
1-800-668-2500 (Canada only)

Germany

Schroff GmbH
Langenalber Str. 96-100
75334 Straubenhardt
49 (07082) 794-0 www.schroff.de

Great Britain

Schroff UK Ltd.
Maylands Avenue
Hemel Hempstead, Herts HP2 7DE
44 (01442) 240471 www.schroff.co.uk

Sweden

Schroff Scandinavia AB
Box 2003
12821 Skarpnäck
46 08683 61 00 www.schroff.se

France

Schroff Sas
Z.I., 4 rue du Marais
67660 Betschdorf
33 03 88 90 64 90 www.schroff.fr

Italy

Schroff srl
Viale Milano, 119
21013 Gallarate (Varese)
39 0331 79 40 03

Singapore

Hoffman-Schroff Pte. Ltd.
#01-68/71 German Centre
25 International Business Park
Singapore 609916
65 5 62-78 90

Japan

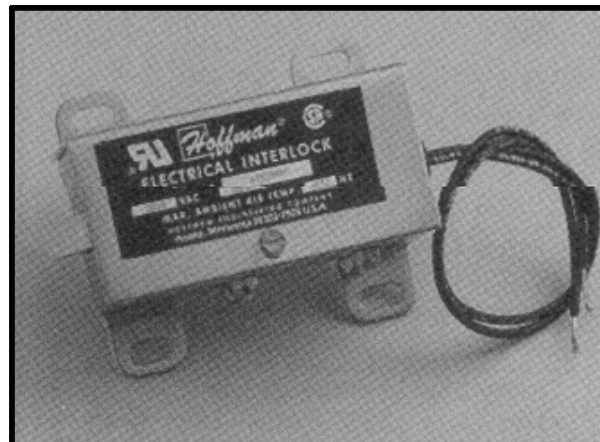
Schroff K.K.
Nisso No. 13 Bldg. 4F
2-5-1 Shinyokohama
Kohoku-Ku, Yokohama shi
Kanagawa 222-0033
81 (045) 476-02 81

Finland

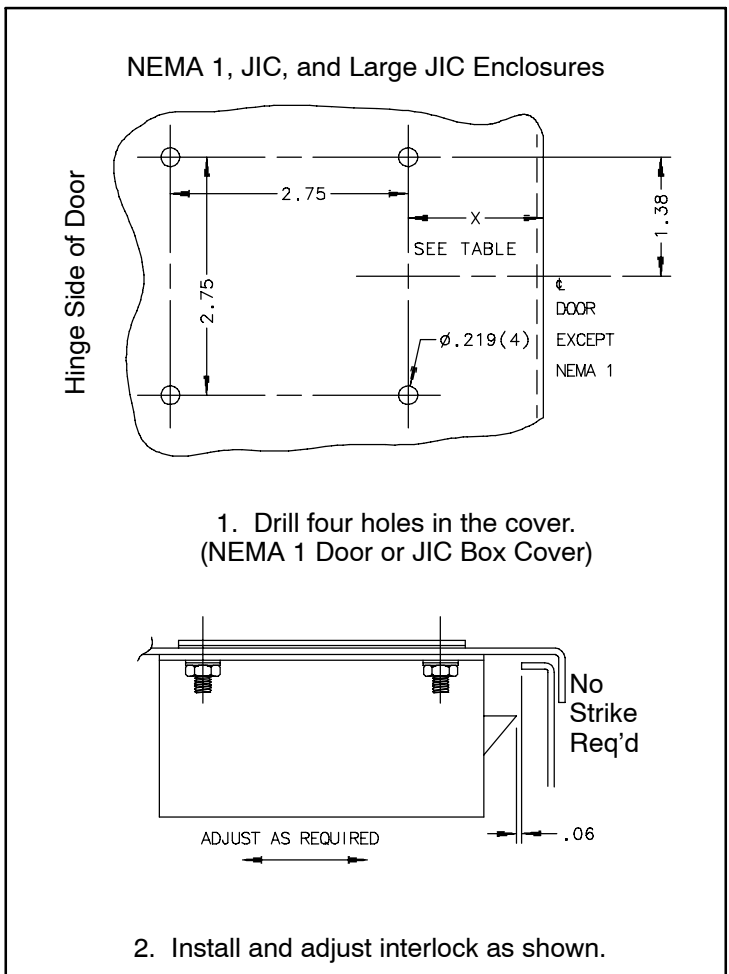
Schroff Scandinavia AB
Peräsimentie 8
03100 Nummela
358 09 222 68 00

Norway

Schroff Scandinavia AB
Ejoberudveien 24
1266 Oslo
47 022 76 33 60



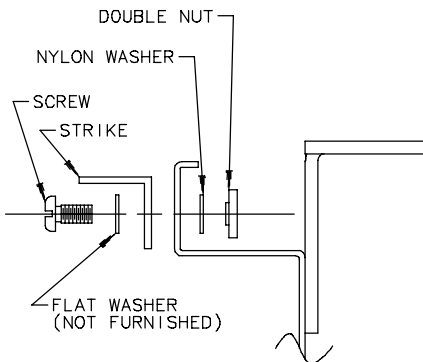
| X | Bulletin Number | Box Description |
|------|---|---|
| 2.12 | A4 A12 A13 | NEMA 4 and NEMA 12 Single Door Enclosures |
| 2.19 | A4 | Two Door NEMA 4 Enclosures |
| 3.00 | A15 | Flush Mounted NEMA 12 Single Door Enclosures (see detail A) |
| 2.00 | A1SM A1M A1L | NEMA 1 When "A" Dimension (Box Height) is Less Than 30" (see detail B) |
| 1.69 | A1SM A1M A1L | NEMA 1 When "A" Dimension (Box Height) Is 30" or More |
| 2.19 | A1SM A1M A1L | Extra Large NEMA 1 |
| 1.56 | A51 A51CH A51NF A51SC A51LP A51DR A53 | <u>JIC Boxes</u> Type CH, CHS, CHAL, CHNF, CHNFSS GIE Instrument Box EMI/RFI JIC Box |
| 2.06 | A52 | Large JIC Boxes When "B" Dimension (Box Width) Is 24" or Less |
| 2.56 | A52 | Large JIC Boxes When "B" Dimension (Box Width) is More Than 24" |



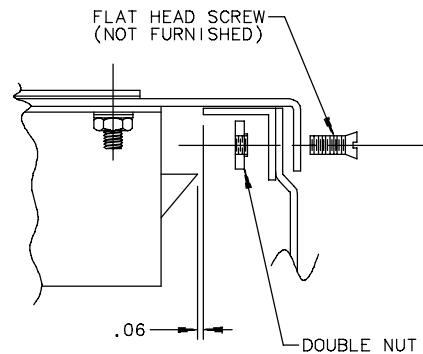
⚠ WARNING

To avoid electric shock, do not energize any circuits before all internal and external electrical and mechanical clearances are checked to assure that all assembled equipment functions safely and properly.

This accessory maintains UL/CSA Type 12,4,4X when installed per these instructions.
This accessory is covered by UL file E61997 and CSA file LR42186.

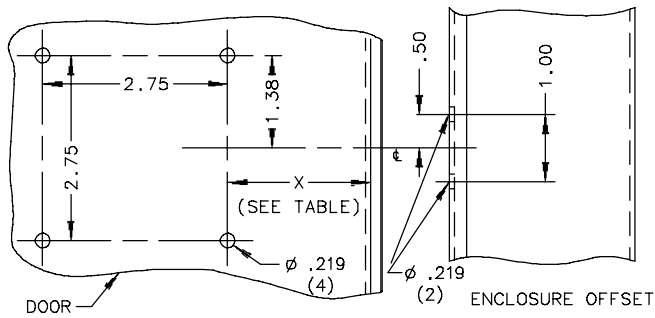


Detail A
Bulletin A15
Flush Mounted Enclosures

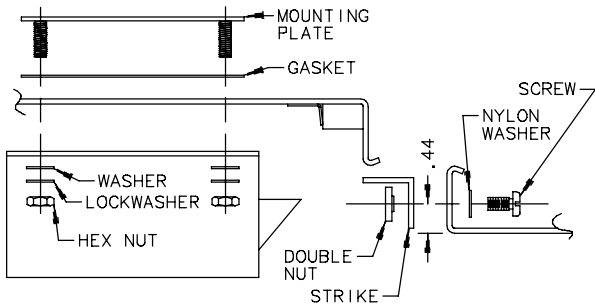


Detail B
Bulletin A1SM,A1M,A1L
NEMA 1 Enclosures

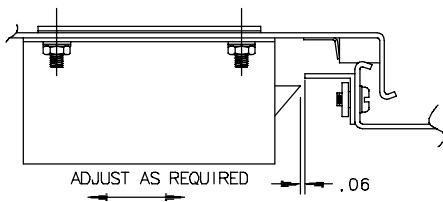
NEMA 4 and NEMA 12 Enclosures



1. Drill four holes in the door and two holes in the offset.

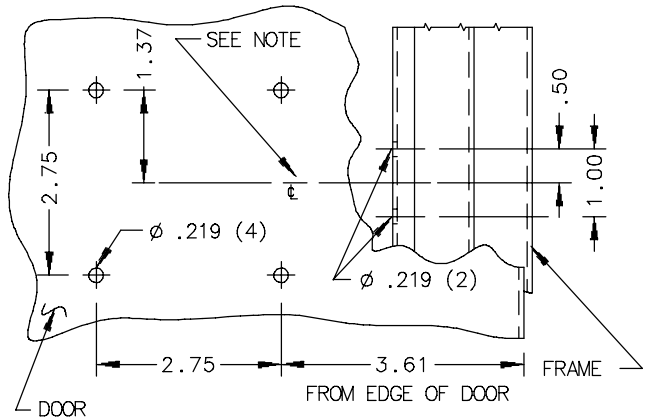


2. Install interlock and strike as shown.

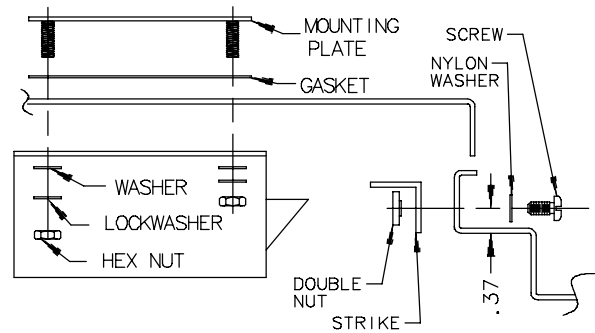


3. Adjust interlock as shown

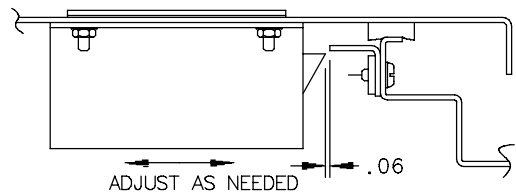
APX® Modular Enclosures



1. Drill four holes in the door and two in frame.



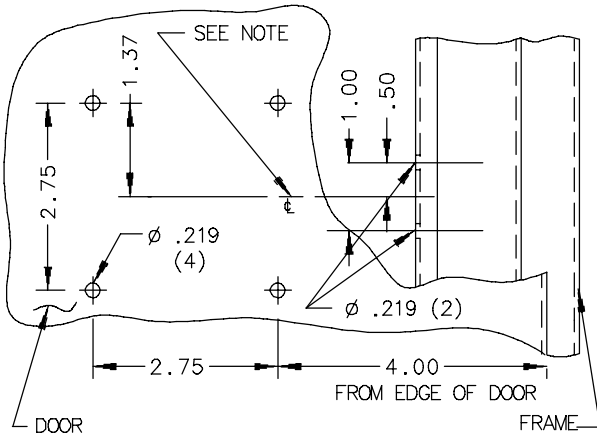
2. Install interlock and strike as shown.



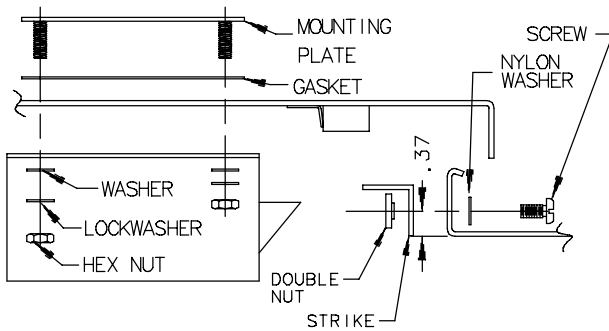
3. Adjust interlock as shown.

NOTE: Centerline of electrical interlock should be close to the middle of the door (Top-To-Bottom), but must clear blocks or strikes (frame mounted hardware).

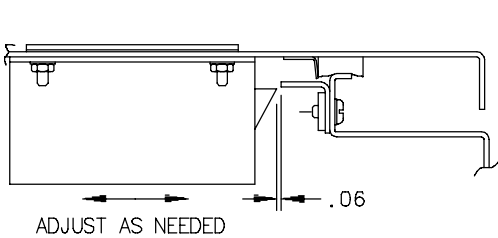
Single Door D20 Enclosures



1. Drill four holes in the door and two in frame.



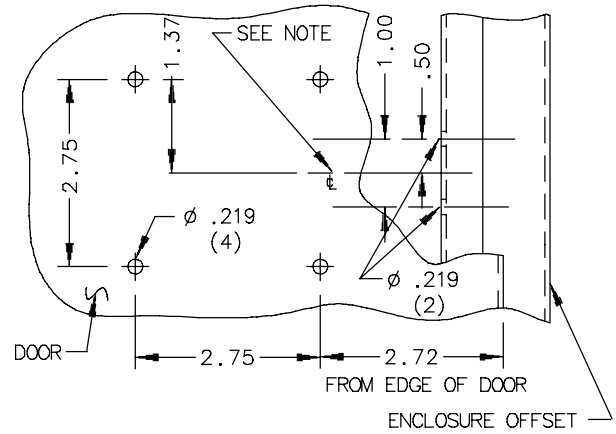
2. Install interlock and strike as shown.



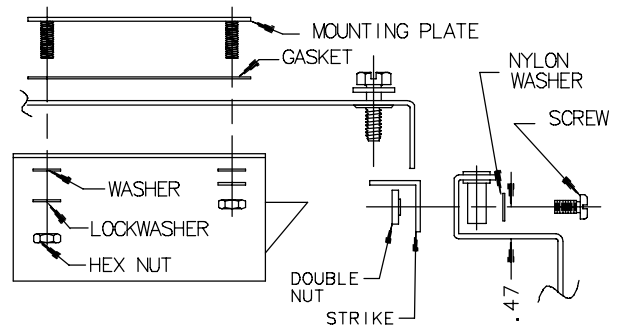
3. Adjust interlock as shown

NOTE: Centerline of electrical interlock should be close to the middle of the door (Top-To-Bottom), but must clear blocks or strikes (frame mounted hardware).

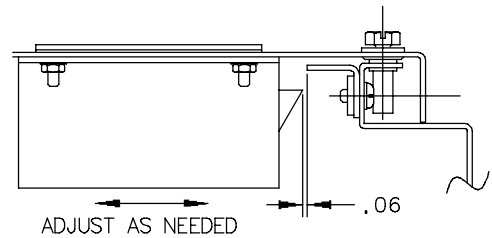
Large NEMA 3R Enclosures



1. Drill four holes in the door and two holes in the offset.



2. Install interlock and strike as shown.



3. Adjust interlock as shown.

NOTE: Position interlock above or below centerline of door when there is a cover screw on centerline of door.