

Rittal – The System.

Faster – better – everywhere.

Drawer 19"/2 U for keyboard and mouse – CP 6002.000

Date : May 24, 2018

ENCLOSURES

POWER DISTRIBUTION

CLIMATE CONTROL

IT INFRASTRUCTURE

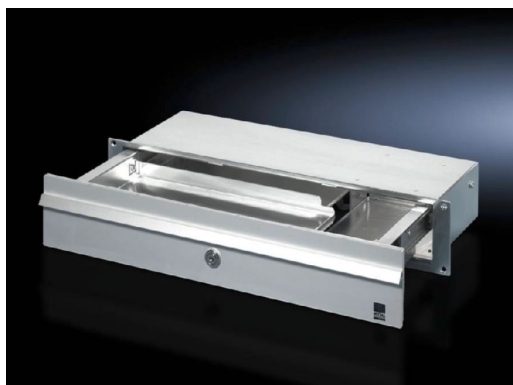
SOFTWARE & SERVICES

FRIEDHELM LOH GROUP



Drawer 19"/2 U for keyboard and mouse – CP 6002.000

created: 24.05.2018 build on www.rittal.com/us-en



Product description

Version:	Drawer: With stay
Applications:	Support for conventional mouse or trackball
Material:	Drawer housing: Carbon steel Drawer and front panel: Aluminum
Surface finish:	Drawer housing: Zinc-plated Drawer and front panel: Natural anodized
Supply includes:	Assembly components for installation in Comfort Panel/Optipanel command panel.

Product features

Dimensions:	Width: 482.6 mm (19 ") Width: 19" Depth: 150 mm (5.9 ")
Installation options:	directly in the Comfort Panel or Optipanel with the appropriate size sufficiently large surfaces (e.g. door, side panel), 19" system punchings, front panels
Keyboard dimensions:	Height (max.): 32 mm (1.3 ") Width (max.): 390 mm (15 ") Depth (max.): 139 mm (5.5 ")
Height units:	2 U
Packaging unit:	1 pc(s).

Weight/packaging unit:	2.8 kg (6.2 lb.)
EAN:	4028177150072
Customs tariff number:	76169990
ETIM 6.0:	EC002620
ETIM 5.0:	EC002620
eCl@ss 8.0/8.1:	27189261
eCl@ss 7.0/7.1:	27189261
eCl@ss 6.0/6.1:	27189261
eCl@ss 5.1/5.1.4:	27189219
Product description (long):	CP Drawer 482.6 mm (19")/2 U, for keyboard and mouse