

Installation Instructions

150TB-1

Deadbreak Bailing Assembly

CONTENTS: *Modified Hold Down Bail, Instruction Sheet.*

DANGER

All apparatus must be de-energized during installation or removal of part(s). For loadbreak products follow operating instructions. All deadbreak connectors must be de-energized before operating. All 200A deadbreak connectors must be mechanically secured with bails when connected.

All apparatus must be installed and operated in accordance with individual user, local, and national work rules. These instructions do not attempt to provide for every possible contingency.

Do not touch or move energized products.

Excess distortion of the assembled product may result in its failure.

FOR MORE INFORMATION ON PARTS, INSTALLATION RATINGS AND COMPATIBILITY, CALL THE NEAREST ELASTIMOLD OFFICE.

Inspect parts for damage, rating and compatibility with mating parts.

This product should be installed only by competent personnel trained in good safety practices involving high voltage electrical equipment. These instructions are not intended as a substitute for adequate training or experience in such safety practices.

Failure to follow these instructions will result in damage to the product and serious or fatal injury.

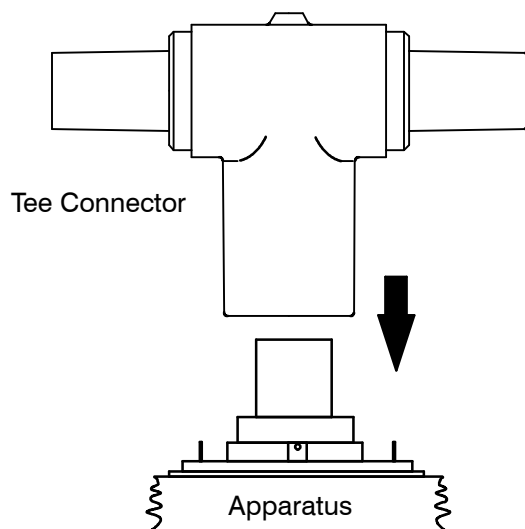
If this product is supplied with a protective shipping cover(s), remove this shipping cover(s) and replace with the appropriate HV insulated cap(s) or connector(s) before submerging or energizing the circuit.

IMPORTANT

1. Check contents of package to ensure they are complete and undamaged.
 2. Check all components to ensure proper fit with cable and/or mating products.
 3. Read entire installation instructions before starting.
 4. Have all required tools at hand and maintain cleanliness throughout the procedure.
-

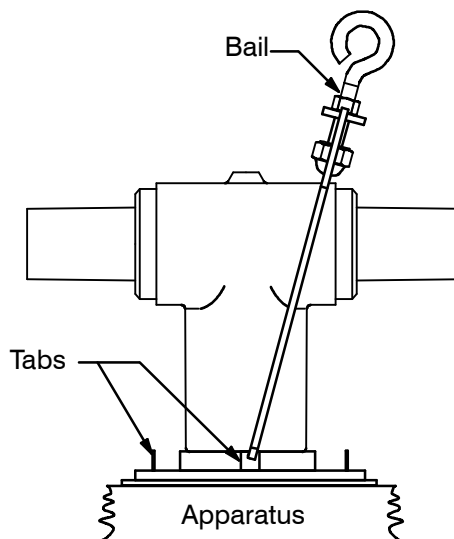
STEP 1

Install the ELASTIMOLD tee connector (150T or K150T) on the apparatus according to the instructions packaged with it.



STEP 2

Insert the 150TB-1 bail in the tabs provided on the apparatus bushing or bushing well.

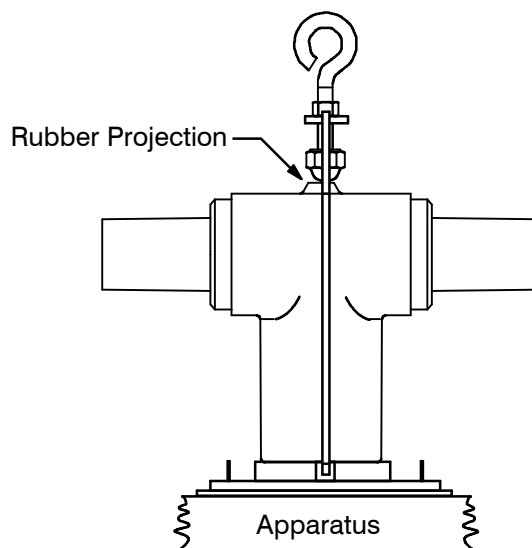


STEP 3

Position the bail over the center of the tee connector and tighten it until the nut on the end of the eyebolt is snug with the rubber projection on the tee connector.

CAUTION: Do not overtighten the bail as you may then damage the tee connector.

The tee connector is now secured and ready to accommodate the desired Elastimold mating products.



Thomas&Betts

8155 T&B Boulevard, Memphis, Tennessee 38125
(800) 888-0211 Fax: (800) 888-0690