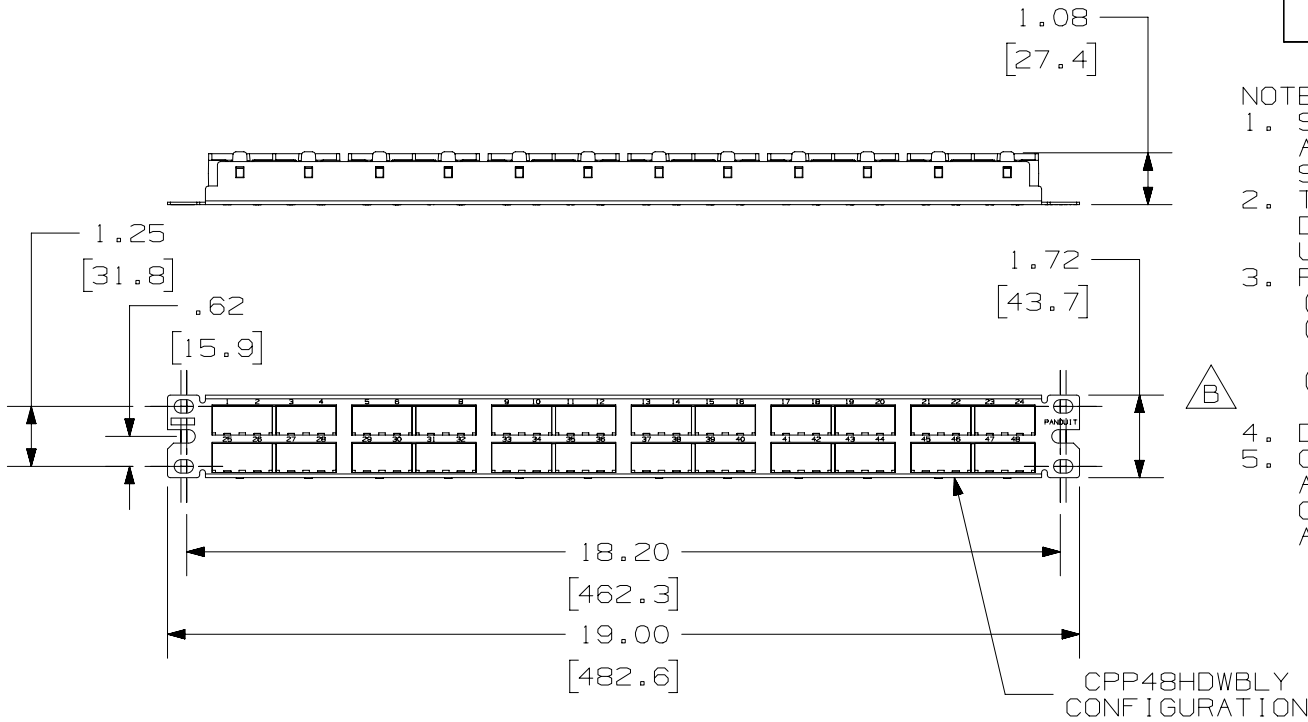


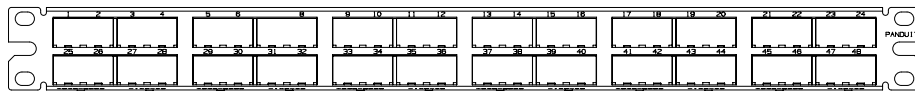
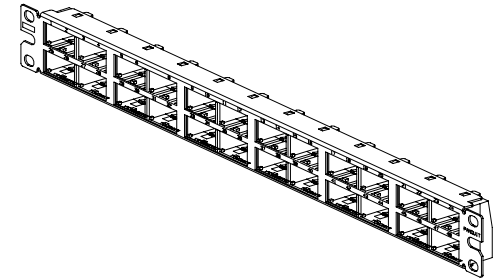
THIS COPY IS PROVIDED ON A RESTRICTED BASIS AND IS NOT TO BE USED IN ANY WAY DETRIMENTAL TO THE INTERESTS OF PANDUIT CORP.

PANDUIT P/N	WEIGHT
CPP48HDWBLY CPP48HDWWH	6.15 LB/10 PCS (2788.0 g/10 PCS)



NOTES:

- SEE CURRENT CATALOG FOR VARIOUS APPLICATIONS WITH THIS WIRING SYSTEM.
- THE HIGH DENSITY PATCH PANEL IS DESIGNED FOR MOUNTING TO 19" UNIVERSAL RACKS.
- PACKAGE CONTENTS:
 - (1) -48 PORT STAMPING
 - (6) -8 POSITION FACEPLATE (ASSEMBLED TO PANEL)
 - (1) -SCREW KIT (INCLUDES FOUR #12-24 SCREWS)
- DIMENSIONS IN [] ARE IN METRIC.
- CPP48HDWBLY FABRICATED COMPONENTS ARE BLACK.
CPP48HDWWH FABRICATED COMPONENTS ARE WHITE.



CPP48HDWWH CONFIGURATION
NOTE: NO RECTANGULAR BOXES

PART NUMBER CPP48HDWBLY/CPP48HDWWH		PANDUIT
TITLE MINI-COM 48 PORT HIGH DENSITY MODULAR PATCH PANEL		
CUSTOMER DRAWING		
ITEM REVISION NAME M02479DA/01		PANDUIT
DATASET FILE NAME M02479DA_DC81/01A		
UNLESS OTHERWISE SPECIFIED, DIMENSIONAL TOLERANCES ARE: IN [mm] .x ± .03 [.8] .xxx ± .010 [.3] .xx ± .03 [.8] ANGLES ±		MATERIAL: STAMPING: 18 GAGE C.R.S. FACEPLATE: ABS
THIRD ANGLE PROJECTION		DRAWING NUMBER: 02479-081
DRAWN BY JSP	DATE 3-11-06	CHK MJD
SCALE NONE		SIZE A

REV	DATE	BY	CHK	APR	DESCRIPTION	ECN
3	11/8/18	BAME	KRKE	MMR	B. REMOVED METRIC SCREWS	02479-081
2	10/4/17	BAME	KRKE	MMR	ADDED P/N CPP48HDWWH	02479-081
1	6/13/14	JSP	REFR	MMR	A. REVISED DRAWING TITLE BLOCK.	02479-081
R	3-11-06	JSP	MJD	MJD	RELEASED TO PRODUCTION	02479-081

D10100DA/14