



Catalog Number: 36368-SC1-NK
Item Description: N1 SCREW COVER ENCL NK
UPC Code: 784572106017

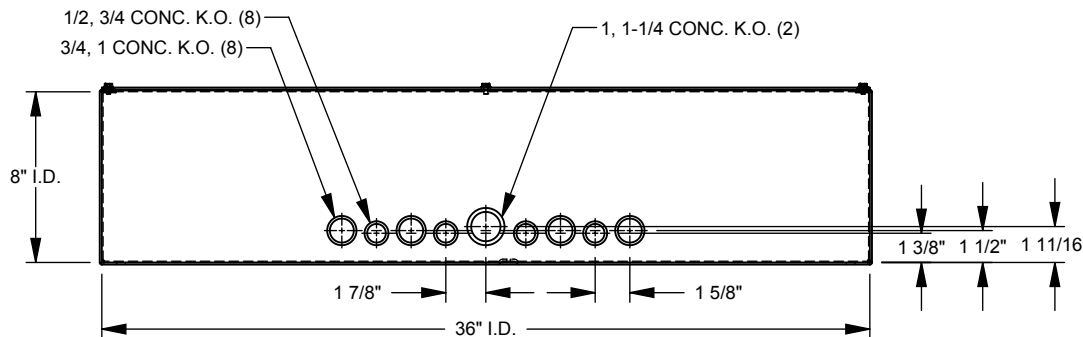
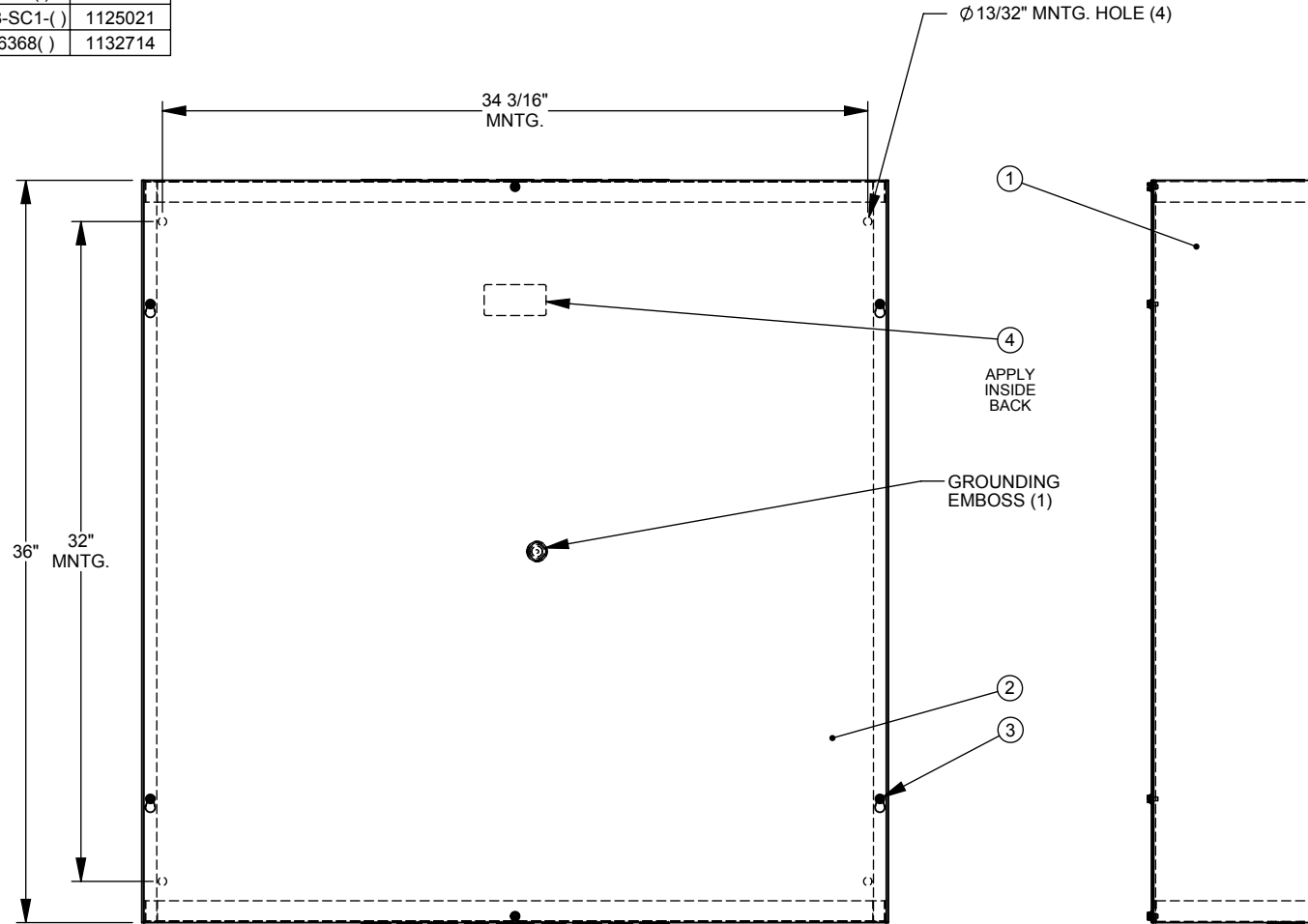
Brand Name: Milbank
Type: Screw Cover
Special Features: Cover Secured with Plated Screws
Application: Enclosure for Mounting Electrical Equipment
Standard: UL Listed
Number Of Outlet: 0
Material: Steel with Powder Coat Finish
Color: ANSI 61 Gray
Mounting: Wall Mount
NEMA Rating: Type 1



Utility requirements may vary. Always consult the serving utility for their requirements prior to ordering or installing this equipment. This product must always be installed by a licensed electrician. Installation of this equipment may require local electrical inspector approval.

CATALOG NO.	LABEL NO.
36368-SC1(-)	1002135
RC-36368-SC1(-)	1125021
SPSC-36368(-)	1132714

ITEM	QTY.	PART NUMBER	DESCRIPTION
1	1	(SEE CHART)	BACK WELDMENT
2	1	(SEE CHART)	COVER PLATE
3	6	1001290	SCREW, 10-32 X 5/16
4	1	(SEE CHART)	LABEL (UL)
5	1	1002475	BAG ASSY (GROUND SCREW)
6	1	1003008	CARTON (NOT SHOWN)



SUFFIX	FINISH	BACK WELDMENT	INSTALL K.O.s	COVER
NONE	MILBANK	1156862	YES	1156867
-NK	LIGHT GRAY	1156864	NO	
-NP	NONE	1156865	YES	1092086
-NK-NP		1156866	NO	

Material:	16 GA. GALV. TOP/BTM 12 GA. GALV. BACK 12 GA. GALV. COVER
Shear/ Die#:	
Finish:	SEE CHART
Part Wt.:	
Tolerances:	Third Angle
Unless Specified Otherwise	
X.X ±.1	
X.XX ±.03	
X.XXX ±.015	
X* ±2*	
Scale:	NTS
Checked By:	
Drawn By:	D.F.
Approved By:	



Title:	SCREW COVER CAN 36x36x8 TYPE 1 ENCLOSURE
Catalog No.:	SEE CHART
Customer:	MILBANK STANDARD
Drawing No.:	1008651
Date:	12/14/11
Sheet	1 of 1

NOTES:
1.) BAG ASSY TO BE SHIPPED INSIDE OF ENCLOSURE.

NEMA DWG.: #221

REV.	DATE	DESCRIPTION	BY
B3	12/14/11	REDRAW INTO SOLIDWORKS (ECO #21687)	D.F.
B4	9/13/12	SHOW GROUNDING EMBOSS (ECO #22922)	D.F.