

Installation Instructions

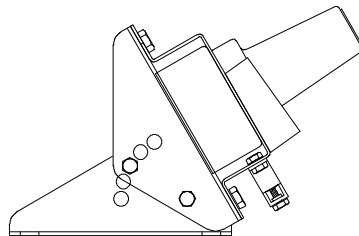
15/25/35kV, 600/900 AMPERE

Two-, Three- and Four-Point Deadbreak Junctions

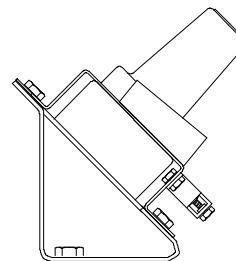
CONTENTS: The contents always include: 1-Deadbreak Junction, and 1-Installation Instruction plus Mounting Hardware for the specific installations listed below.

- A. Universal Mount: 1-Base Bracket, 1-Base Plate, 4-Universal Brackets, 1-Mounting Hardware Prepack.
- B. 45° Fixed Mount: 1-Base Bracket, 1-Base Plate, 2-45° Mounting Brackets, 1-Mounting Hardware Prepack.
- C. Flat Mount w/Base Bracket: 1-Base Bracket, 1-Base Plate.
- D. Flat mount w/o Base Bracket: 1-Shield Plate, Hold Down Bracket(s) (as required).

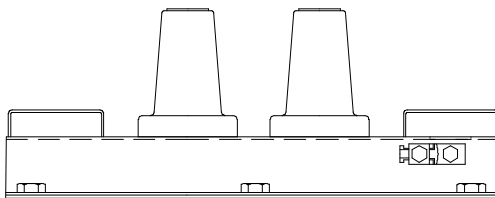
SECTION A
Universal Mount



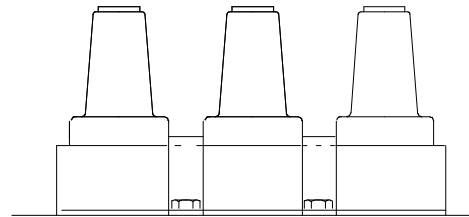
SECTION B
45° Fixed Mount



SECTION C
Flat Mount with Base Bracket



SECTION D
Flat Mount without Base Bracket



The two-, three- and four-point deadbreak junctions have voltage and current ratings as indicated on the junctions and are designed to interface with ELASTIMOLD deadbreak connectors for the purpose of sectionalizing, looping, tapping or for apparatus change out. The deadbreak junctions are designed for mounting on any flat surface.

DANGER

All apparatus must be de-energized during installation or removal of part(s). For loadbreak products follow operating instructions. All deadbreak connectors must be de-energized before operating. All 200A deadbreak connectors must be mechanically secured with bails when connected.

All apparatus must be installed and operated in accordance with individual user, local, and national work rules. These instructions do not attempt to provide for every possible contingency.

Do not touch or move energized products.

Excess distortion of the assembled product may result in its failure.

FOR MORE INFORMATION ON PARTS, INSTALLATION RATINGS AND COMPATIBILITY, CALL THE NEAREST ELASTIMOLD OFFICE.

Inspect parts for damage, rating and compatibility with mating parts.

This product should be installed only by competent personnel trained in good safety practices involving high voltage electrical equipment. These instructions are not intended as a substitute for adequate training or experience in such safety practices.

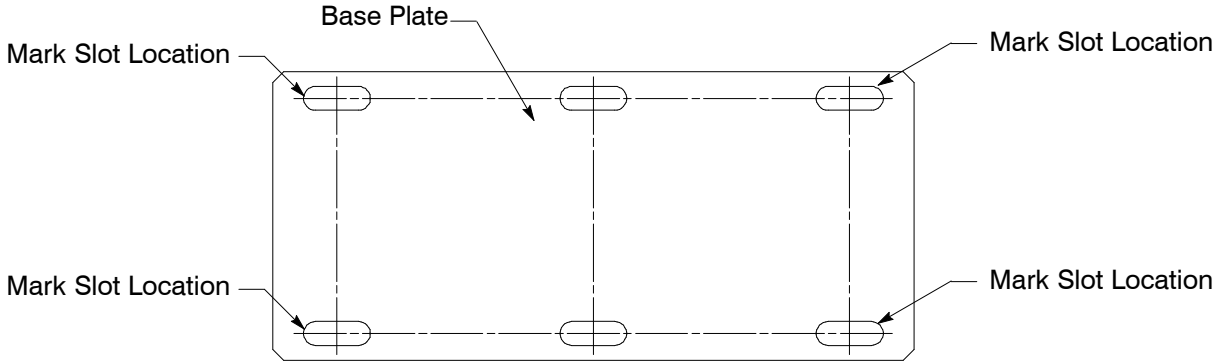
Failure to follow these instructions will result in damage to the product and serious or fatal injury.

If this product is supplied with a protective shipping cover(s), remove this shipping cover(s) and replace with the appropriate HV insulated cap(s) or connector(s) before submerging or energizing the circuit.

Section A – Universal Mount

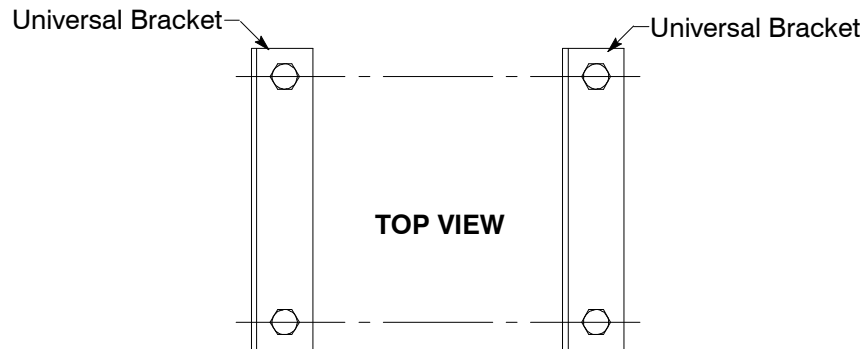
STEP 1

Determine the desired location of the junction assembly. Using the base plate as a template, place it on the surface that the junction is to be mounted and mark slot locations.



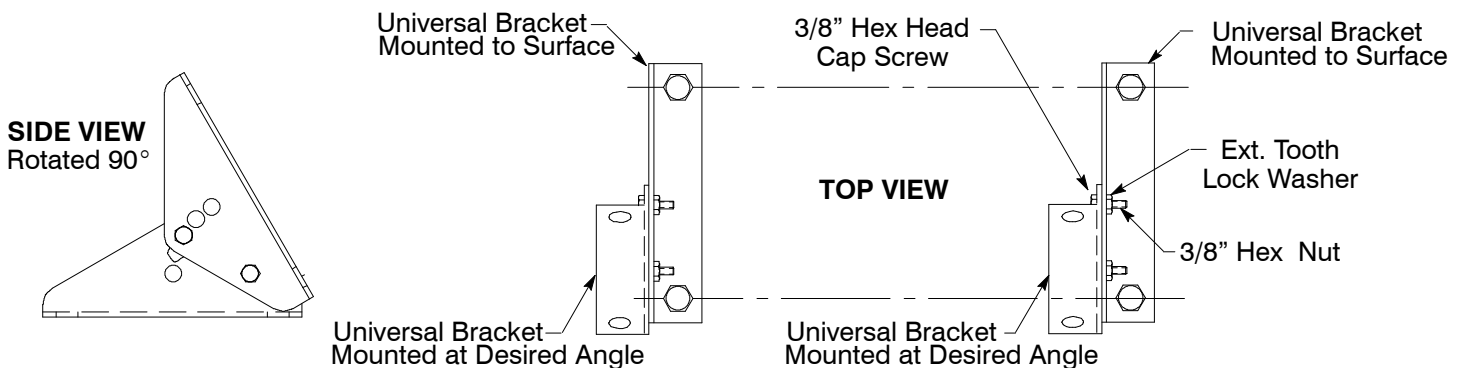
STEP 2

Attach two (2) universal brackets to flat surface using suitable fasteners and tighten securely to ensure no movement during operation.



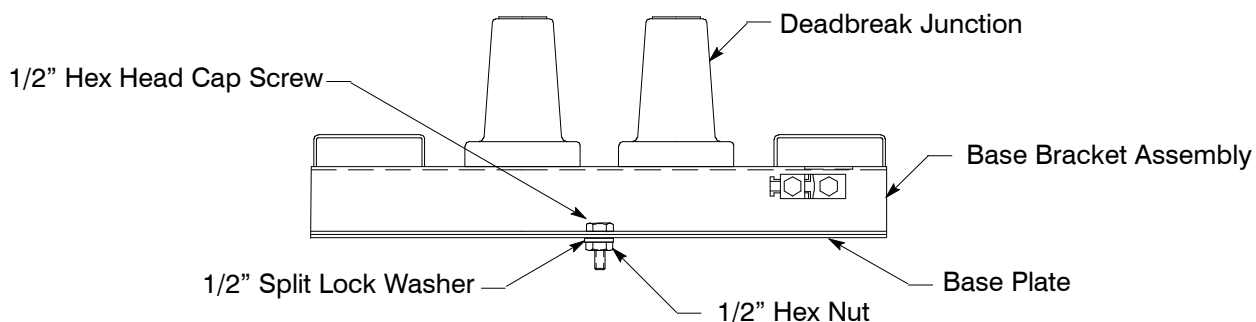
STEP 3

Attach the remaining two (2) universal brackets to the two (2) universal brackets mounted on the surface at desired angle using the hardware supplied. Tighten securely.



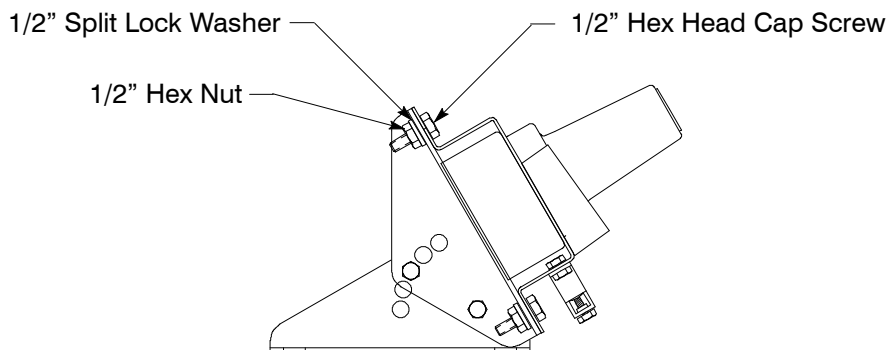
STEP 4

Assemble deadbreak junction to base bracket assembly and base plate using two (2) 1/2" hex head cap screws, two (2) 1/2" split lock washers, and two (2) 1/2" hex nuts attached to the center mounting holes on the bracket assembly. Tighten securely.



STEP 5

Attach the deadbreak junction assembly to the universal brackets using the hardware supplied. Tighten securely. Be sure parking stand is in upright position.



STEP 6

The base bracket assembly and junction's black conductive jacket must be grounded. A grounding lug is provided on the base bracket for this purpose. It accommodates wire sizes of No. 2 solid to 1/0 stranded.

STEP 7

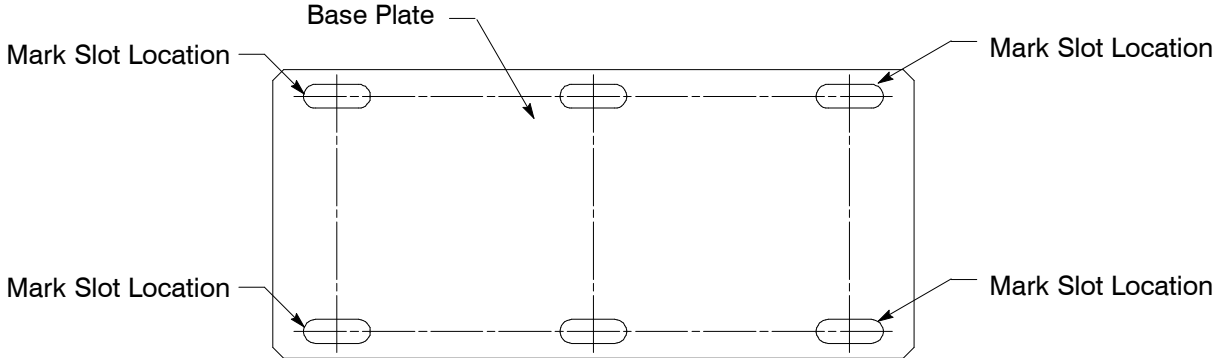
Operating Instructions

Go to page 7 of this installation instruction for operating instructions.

Section B – 45° Fixed Mount

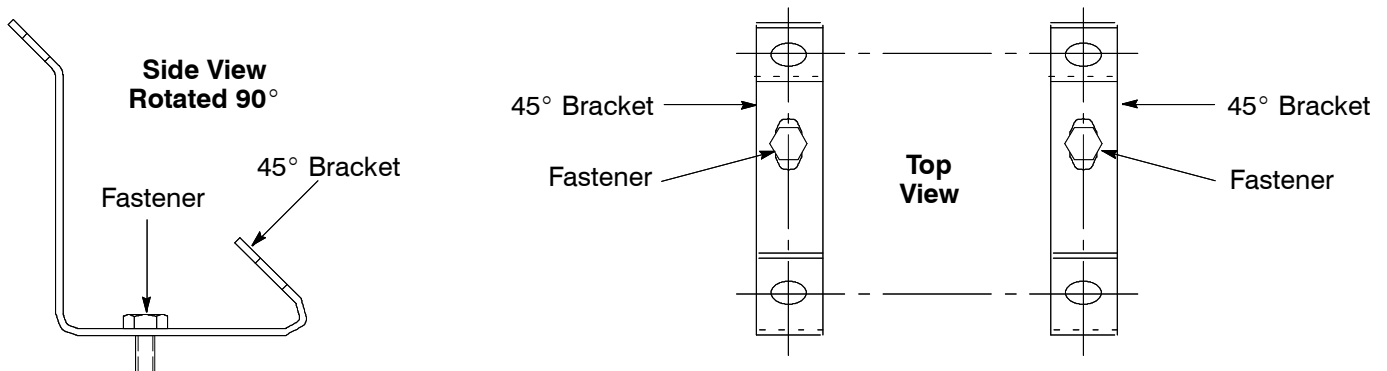
STEP 1

Determine the desired location of the junction assembly. Using the base plate as a template, place it on the surface that the junction assembly is to be mounted and mark slot locations.



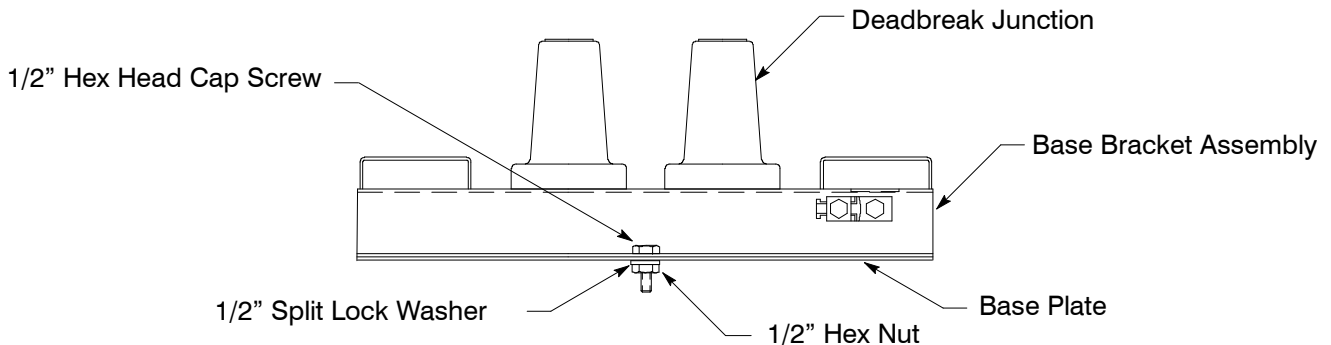
STEP 2

Attach the two (2) 45° brackets to the surface using suitable fasteners and tighten securely to ensure no movement during operation.



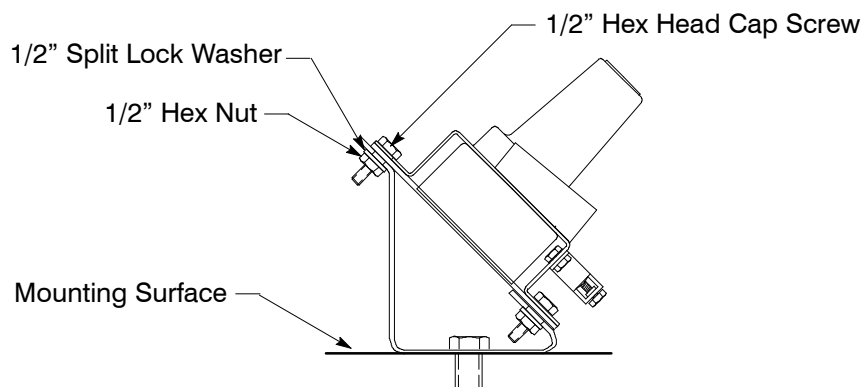
STEP 3

Assemble deadbreak junction to base bracket assembly and base plate using two (2) 1/2" hex head cap screws, two (2) 1/2" split lock washers and two (2) 1/2" hex nuts attached to the center mounting holes on the bracket assembly. Tighten securely.



STEP 4

Attach the junction assembly to the 45° brackets using the hardware supplied. Tighten securely. Be sure parking stand is in upright position.



STEP 5

The base bracket assembly and junction's black conductive jacket must be grounded. A grounding lug is provided on the base bracket for this purpose. It accommodates wire sizes of No. 2 solid to 1/0 stranded.

STEP 6

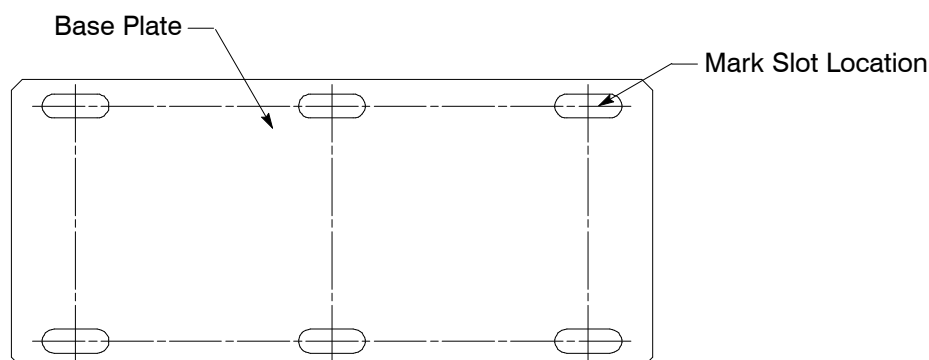
Operating Instructions

Go to page 7 of this installation instruction for operation instructions.

Section C – Flat Mount w/Base Bracket

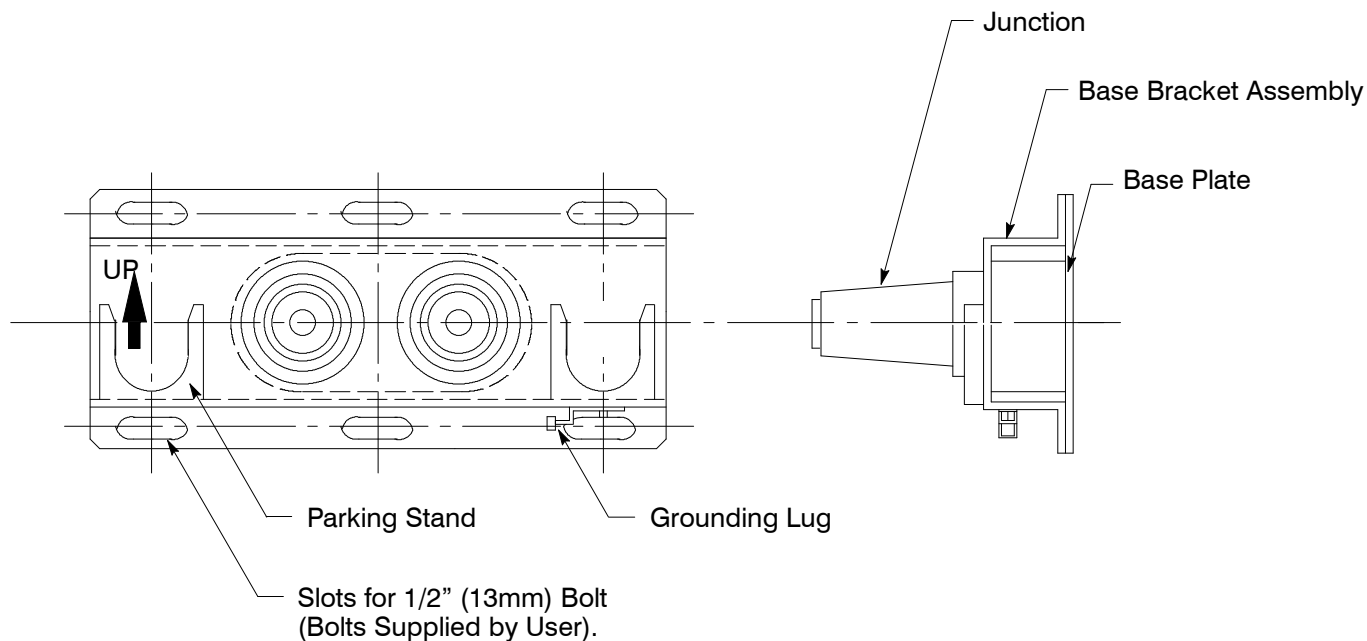
STEP 1

Determine the desired location of the junction assembly. Using the base plate as a template, place the base plate on the surface that the junction is to be mounted and mark all slot locations.



STEP 2

Assemble deadbreak junction to base bracket assembly and base plate with suitable fasteners, attach to flat surface and tighten all fasteners securely to insure no movement during operation. Make sure parking stand is in an upright position.



STEP 3

The base bracket assembly and junction's black conductive jacket must be grounded. A grounding lug is provided on the base bracket for this purpose. It accommodates wire sizes of No. 2 solid to 1/0 stranded.

STEP 4

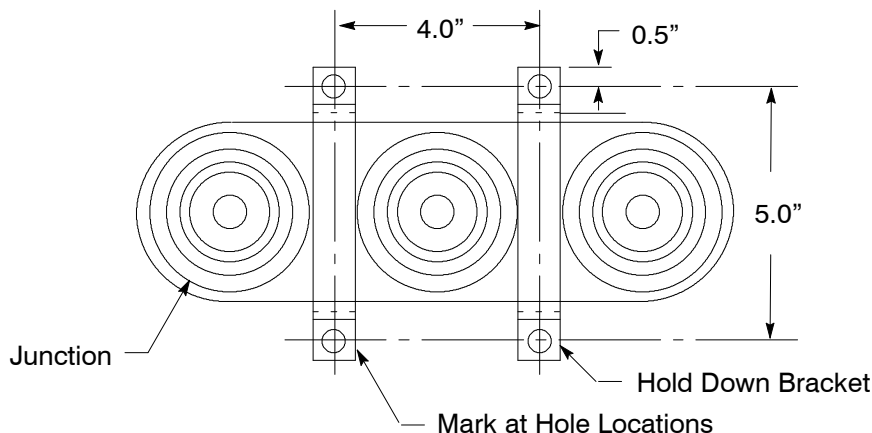
Operating Instructions

Go to page 7 of this installation instruction for operation instructions.

Section D – Flat Mount w/o Base Bracket

STEP 1

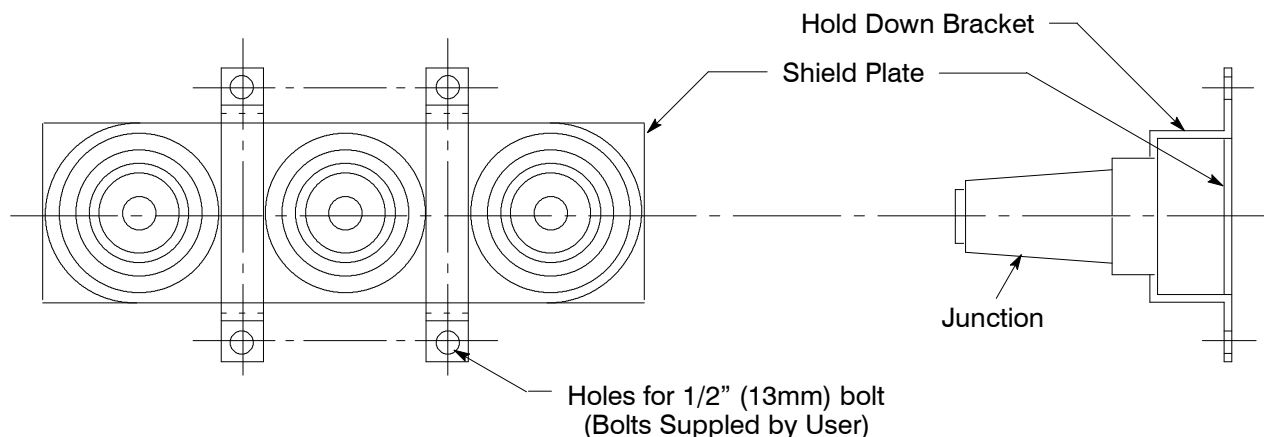
Determine the desired location of the junction assembly. Using the hold down bracket(s) assembled on the junction as a template, place the assembly on the surface that junction is to be mounted and mark all hole locations.



STEP 2

Assemble deadbreak junction, shield plate and hold down bracket(s) with suitable fasteners, attach to flat surface and tighten all fasteners securely to ensure no movement during operation.

IMPORTANT: Conductive jacket of junction and shield plate must be grounded through contact with grounding conductive mounting surface. If mounting surface is not grounded attach grounding lug to bracket bolt.



Operating Instructions

1. Remove all protective caps and clean the operating interfaces. Lubricate each interface with an ELASTIMOLD approved lubricants. **DO NOT SUBSTITUTE.** Other lubricants may be harmful to this product or its mating product(s).
2. If all operating interfaces are not utilized, insulated caps must be installed on the unused bushing(s) before energization.
3. Do not use the protective shipping caps for this function as they are not insulated and are only intended to keep the operating interfaces clean during handling and installation.

Thomas & Betts

8155 T&B Boulevard, Memphis, Tennessee 38125
(800) 888-0211 Fax: (800) 888-0690