

M-13864

1

CONCENTRIC KNOCKOUTS

| LOCATION | QUANTITY | TRADE SIZE |
|----------|----------|----------------|
| ENDS | 1/END | 1/2", 3/4", 1" |
| SIDES | 2/SIDE | 1/2", 3/4", 1" |
| BOTTOM | 2 | 1/2", 3/4" |
| BOTTOM | 2 | 1", 1-1/4" |

LIST OF PARTS

| DESCRIPTION | MATERIAL | FINISH |
|-------------------|--------------|---------|
| BOX ASSEMBLY | 16 GA. STEEL | ZINC ** |
| TOP MOUNTING ASSY | 14 GA. STEEL | ZINC |
| TRANSITION ASSY | 14 GA. STEEL | ZINC |
| GROUND WIRES | COPPER | |
| WIRING CHANNEL | 16 GA. STEEL | ZINC |
| FASTENERS | STEEL | ZINC |
| TEMP COVER | 14 GA. STEEL | ZINC |
| | | |
| | | |
| | | |
| | | |
| | | |
| | | |
| | | |

** CATALOG NO. CFB2G25RCR BOX ASSEMBLY IS GALVANIZED AND EPOXY COATED ON EXTERIOR SURFACE.

| | | | |
|-----|------------------------|-----|---------|
| 1 | RELEASED PER DCN 23642 | SBW | 3/19/18 |
| REV | DESCRIPTION | APP | DATE |

THE DESIGN AND DIMENSIONS OF THE PRODUCT SHOWN ON THIS DRAWING ARE SUBJECT TO CHANGE WITHOUT NOTICE. DIMENSIONS ARE IN INCHES [mm].

TITLE
CONCRETE FLOOR BOX, 2 GANG FOR 6" ROUND COVER, SHALLOW



WIRING DEVICE-KELLEMS
HUBBELL INCORPORATED
SHELTON, CT

TOLERANCES UNLESS OTHERWISE SPECIFIED
.XX = ± .01
.XXX = ± .005
ANGLE TOL. ±2°

DR. BY SBW
CHK. BY

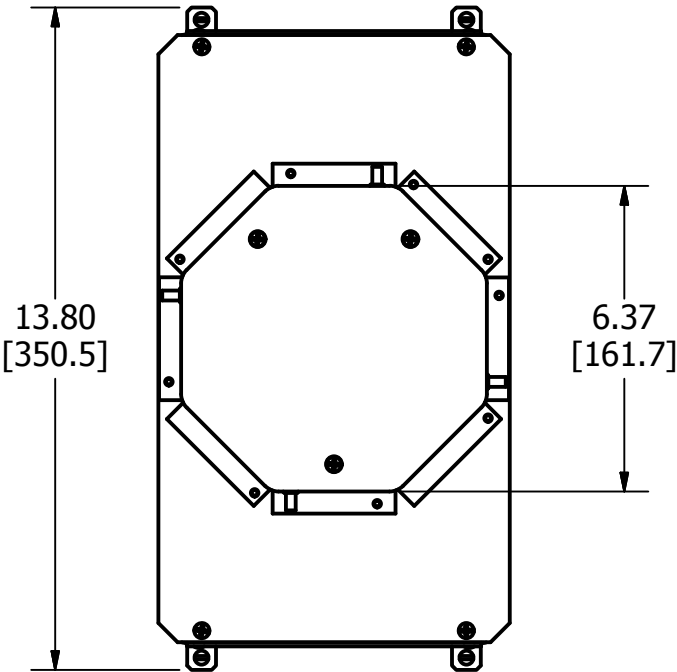
SCALE 1/4
DATE 3/5/2018

DIMENSION SHEET FOR CAT. NO.
CFB2G25R, CFB2G25RCR

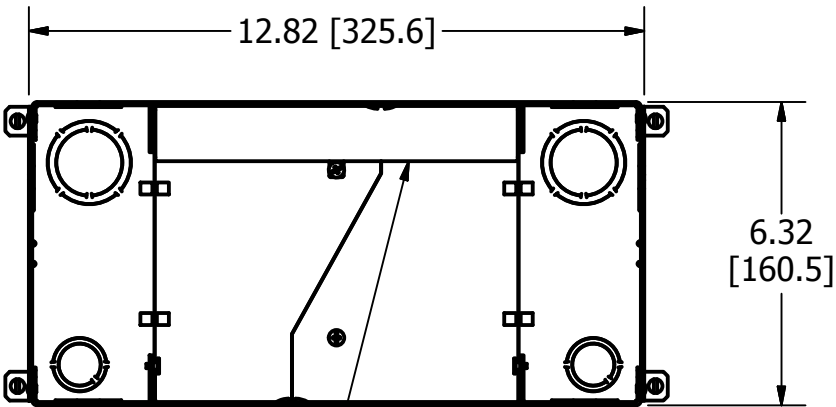
B

M-13864

1



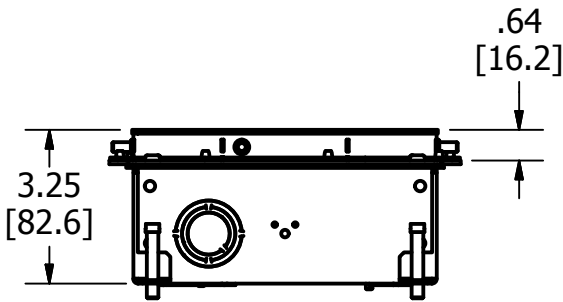
TOP VIEW



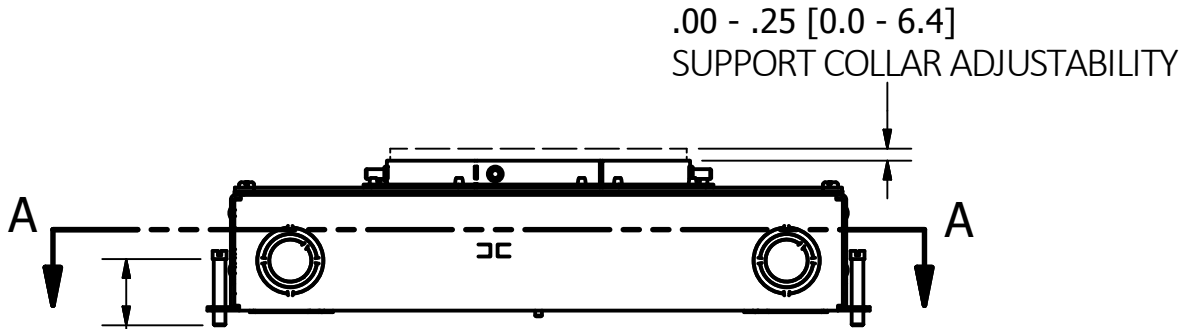
WIRING CHANNEL

SECTION A-A

VIEW THROUGH BOX BELOW TRANSITION



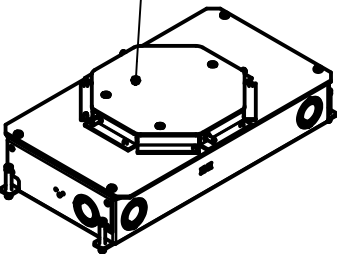
END VIEW



4X 1.38 [35.1]
LEVELING SCREW

SIDE VIEW
TEMP COVER NOT SHOWN

TEMP COVER



ISOMETRIC

- NOTES:
- ALL DIMENSIONS ARE IN INCHES AND [MILLIMETERS].
 - PRODUCT IS cULus LISTED. COMPLIES WITH UL 514A.
 - EACH GANG SUPPLIED WITH 6" [152.4] 12 GA. AWG GROUND PIGTAIL.
 - MINIMUM CONCRETE POUR: 3.25" [82.6].
 - WIRING CHAMBER VOLUMES (RECESSED COVER) : (2) 30 IN³ [491.7 CM³].
 - WIRING CHANNEL AREA: .39 IN² [251 MM²].