

BALDOR® • ***RELIANCE***

Product Information Packet

CWDM3558

2HP,1735RPM,3PH,60HZ,56C,3523M,TEFC,F1,N

Part Detail							
Revision:	N	Status:	INA/A	Change #:		Proprietary:	No
Type:	AC	Elec. Spec:	35WGP805	CD Diagram:	CD0005	Mfg Plant:	
Mech. Spec:	35H868	Layout:	35LYH868	Poles:	04	Created Date:	07-08-2010
Base:	RG	Eff. Date:	09-28-2016	Leads:	9#18		

Specs			
Catalog Number:	CWDM3558	Insulation Class:	F
Enclosure:	TEFC	Inverter Code:	Not Inverter
Frame:	56C	KVA Code:	L
Frame Material:	Steel	Lifting Lugs:	No Lifting Lugs
Output @ Frequency:	2.000 HP @ 60 HZ	Locked Bearing Indicator:	Locked Bearing
Synchronous Speed @ Frequency:	1800 RPM @ 60 HZ	Motor Lead Quantity/Wire Size:	9 @ 18 AWG
Voltage @ Frequency:	460.0 V @ 60 HZ	Motor Lead Exit:	Ko Box
	230.0 V @ 60 HZ	Motor Lead Termination:	Flying Leads
	208.0 V @ 60 HZ	Motor Type:	3523M
XP Division:	Not Applicable	Mounting Arrangement:	F1
Agency Approvals:	CSA	Power Factor:	76
	UR	Product Family:	Wash Down
Auxillary Box:	No Auxillary Box	Pulley End Bearing Type:	Sealed Bearing
Auxillary Box Lead Termination:	None	Pulley Face Code:	C-Face
Base Indicator:	RG	Pulley Shaft Indicator:	Standard
Bearing Grease Type:	Polyrex EM (-20F +300F)	Rodent Screen:	None
Blower:	None	Shaft Extension Location:	Pulley End
Current @ Voltage:	3.000 A @ 460.0 V	Shaft Ground Indicator:	No Shaft Grounding

	6.000 A @ 230.0 V	Shaft Rotation:	Reversible
	6.500 A @ 208.0 V	Shaft Slinger Indicator:	Shaft Slinger
Design Code:	B	Speed Code:	Single Speed
Drip Cover:	No Drip Cover	Motor Standards:	NEMA
Duty Rating:	CONT	Starting Method:	Direct on line
Electrically Isolated Bearing:	Not Electrically Isolated	Thermal Device - Bearing:	None
Feedback Device:	NO FEEDBACK	Thermal Device - Winding:	None
Front Face Code:	Standard	Vibration Sensor Indicator:	No Vibration Sensor
Front Shaft Indicator:	None	Winding Thermal 1:	None
Heater Indicator:	No Heater	Winding Thermal 2:	None

Nameplate NP1496L										
CAT.NO.	CWDM3558X									
SPEC.	35H868P805G1									
HP	2									
VOLTS	208-230/460									
AMP	6.5-6/3									
RPM	1735									
FRAME	56C				HZ	60			PH	3
SER.F.	1.15		CODE	L	DES	B		CLASS	F	
NEMA-NOM-EFF	82.5		PF	76						
RATING	40C AMB-CONT									
CC	USABLE AT 208V									
DE	6205				ODE	6203				
ENCL	TEFC		SN							
NOT FOR USE IN USA										

AC Induction Motor Performance Data

Record # 26940 - Typical performance - not guaranteed values

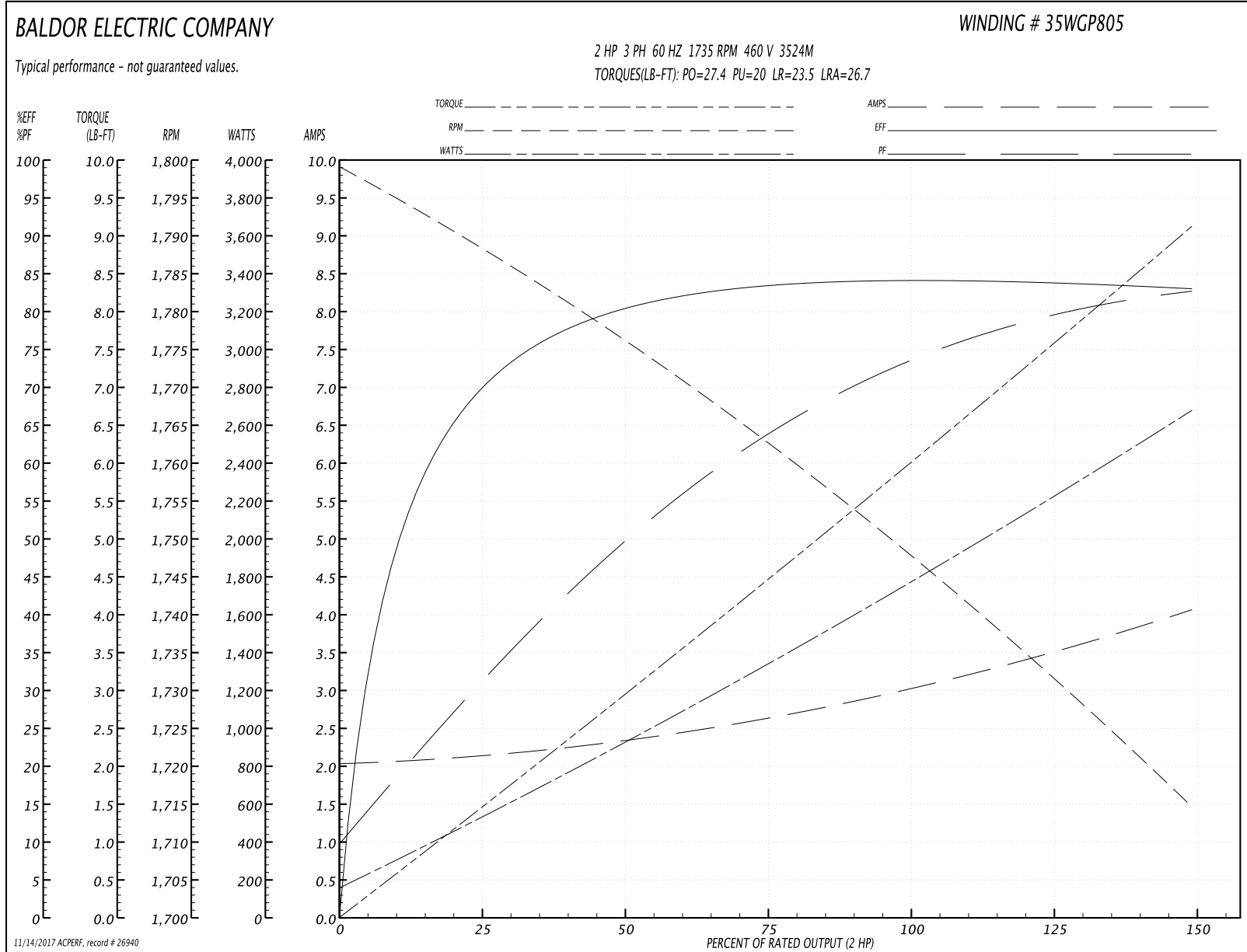
Winding: 35WGP805-R001	Type: 3524M	Enclosure: TEFC
-------------------------------	--------------------	------------------------

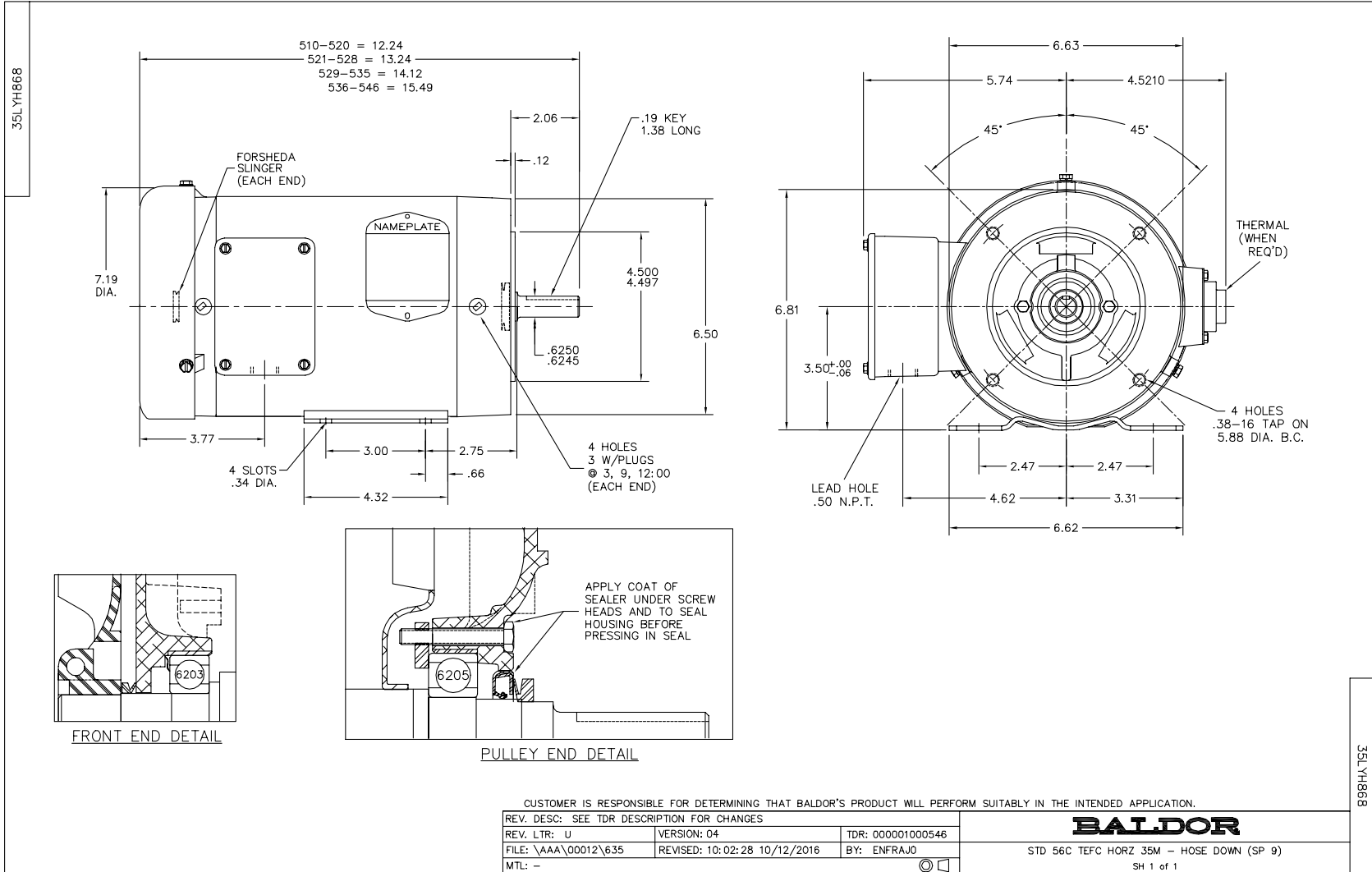
Nameplate Data				460 V, 60 Hz: High Voltage Connection	
Rated Output (HP)	2			Full Load Torque	5.98 LB-FT
Volts	208-230/460			Start Configuration	direct on line
Full Load Amps	6.5-6.0/3.0			Breakdown Torque	27.4 LB-FT
R.P.M.	1735			Pull-up Torque	20 LB-FT
Hz	60	Phase	3	Locked-rotor Torque	23.5 LB-FT
NEMA Design Code	B	KVA Code	L	Starting Current	26.7 A
Service Factor (S.F.)	1.15			No-load Current	2.05 A
NEMA Nom. Eff.	82.5	Power Factor	76	Line-line Res. @ 25°C	7.95 Ω
Rating - Duty	40C AMB-CONT			Temp. Rise @ Rated Load	68°C
S.F. Amps				Temp. Rise @ S.F. Load	79°C
				Locked-rotor Power Factor	61.3
				Rotor inertia	0.142 LB-FT ²

Load Characteristics 460 V, 60 Hz, 2 HP

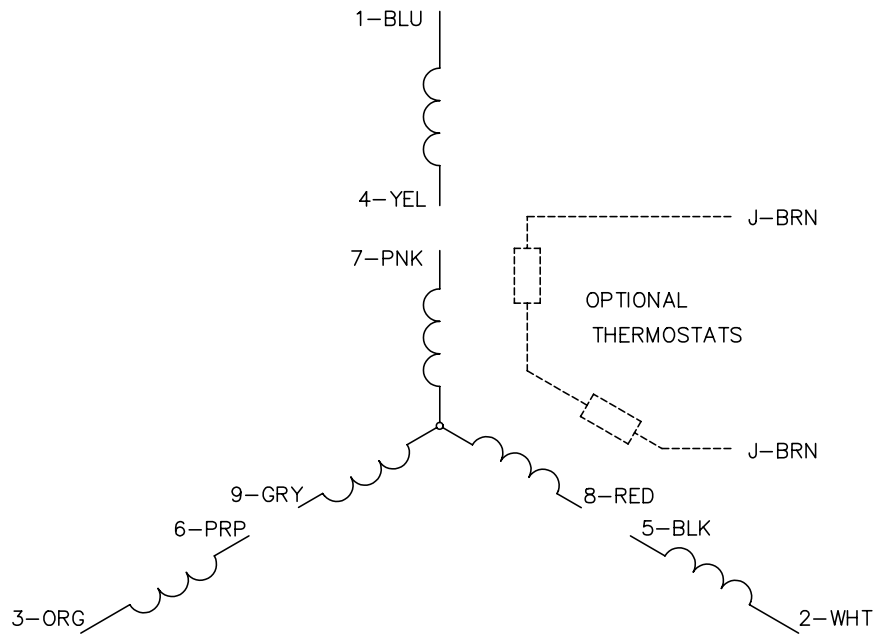
% of Rated Load	25	50	75	100	125	150	S.F.
Power Factor	31	50	64	73	79	83	80
Efficiency	69	80.2	83.4	84.3	83.8	83	82.3
Speed	1789	1776	1763	1749	1731	1715	1723
Line amperes	2.12	2.32	2.62	3.04	3.51	4.05	3.25

Performance Graph at 460V, 60Hz, 2.0HP Typical performance - Not guaranteed values

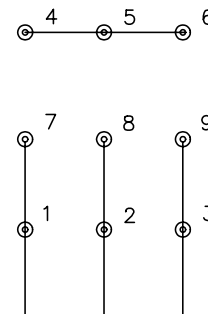




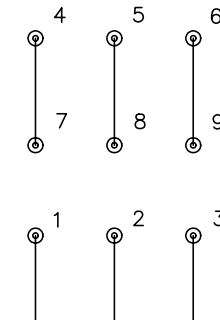
CD0005



LOW VOLTAGE
(2Y)



HIGH VOLTAGE
(1Y)



NOTES:

1. INTERCHANGE ANY TWO LINE LEADS TO REVERSE ROTATION.
2. OPTIONAL THERMOSTATS ARE PROVIDED WHEN SPECIFIED.
3. ACTUAL NUMBER OF INTERNAL PARALLEL CIRCUITS MAY BE A MULTIPLE OF THOSE SHOWN ABOVE.
4. LEAD COLORS ARE OPTIONAL. LEADS MUST ALWAYS BE NUMBERED AS SHOWN.

REV. DESC: REVISE TO SHOW OPTIONAL COLORS			
REV. LTR: E	BY: JLP	REVISED: 01/19/99 10:15	TDR: 0171435
90000		FILE: AAA00005140	MDL: -
		MTL: -	

BALDOR ELECTRIC Co.

3PH, DV, 9 LEADS

CD0005