

2

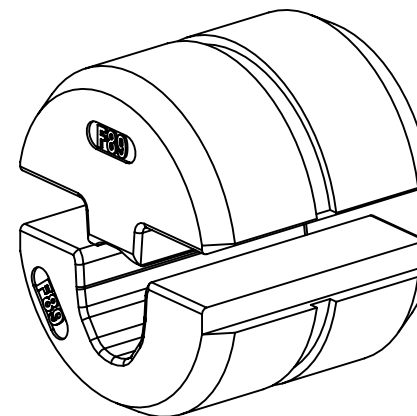
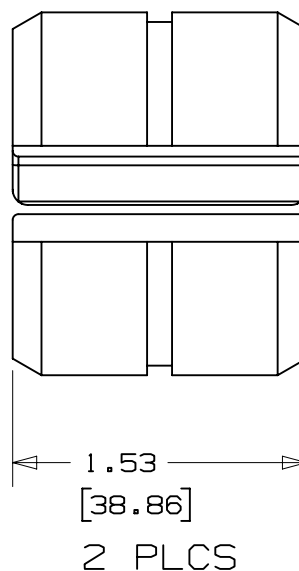
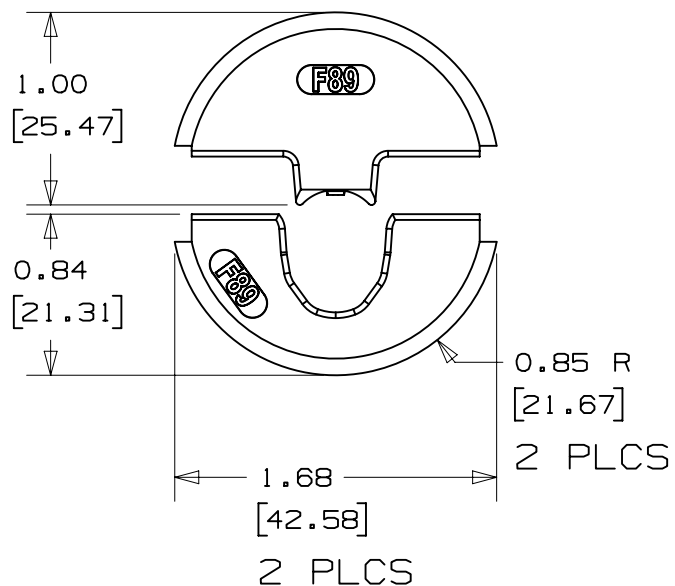
1

THIS COPY IS PROVIDED ON A RESTRICTED BASIS AND IS NOT TO BE USED IN ANY WAY DETRIMENTAL TO THE INTERESTS OF PANDUIT CORP.

NOTES, UNLESS OTHERWISE SPECIFIED:

PART MUST BE RoHS COMPLIANT.

1. DIMENSIONS IN BRACKETS ARE IN METRIC.
2. RECOMMENDED TOOL: CT-3001/ST
3. COMPATIBLE TOOLS: CT-2931/ST, CT-920CH, CT-930LPCH
4. WIRE SIZE: 2/0
5. CRIMPS: F89 FERRULES - ALL SIZES
6. DIE HALVES ARE HEAT TREATED TO Rc 32-35
7. DIE HALVES ARE NICKLON PLATED FOR LUBRICITY/DURABILITY



00	03-30-17	BJPU	JEH	JADE	RELEASED	012679
REV	DATE	BY	CHK	APR	DESCRIPTION	ECN

INSTALLATION INSTRUCTION NUMBER		FMEA & CONTROL PLAN NUMBER	
PA28870A01		N/A	
TITLE			
CD-920-F89 CUSTOMER DRAWING			
CUSTOMER DRAWING			
ITEM REVISION NAME		PANDUIT	
R28875AA/00			
DATASET FILE NAME			
R28875AA-00-dwg1		MATERIAL:	
UNLESS OTHERWISE SPECIFIED, DIMENSIONAL TOLERANCES ARE: IN [mm]		4140 STEEL / RC 32-35	
.x ± .1 [2.54] .xx ± .01 [.25]		.xxx ± .005 [.127] ANGLES ± 5 °	
THIRD ANGLE PROJECTION		DRAWING NUMBER:	
DRAWN BY		TD28875A01	
BJPU		SHT 1 OF 1	
DATE		SIZE	
03/30/17		A	
CHK			
JADE			
SCALE			
1:1			

2

1