

# **BALDOR® • RELIANCE**

## **Product Information Packet**

### **D50150P-BV**

**150HP,1750/2000RPM,DC,407-9AT,DPBV,F1,N**

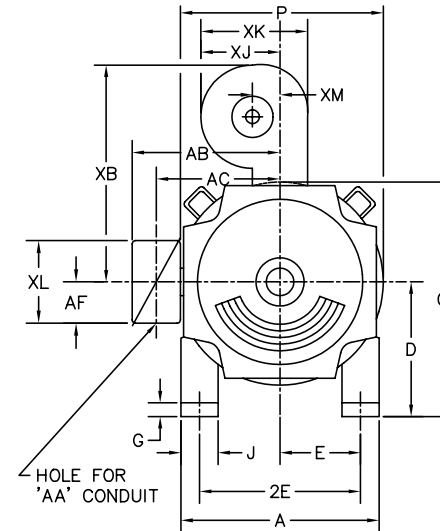
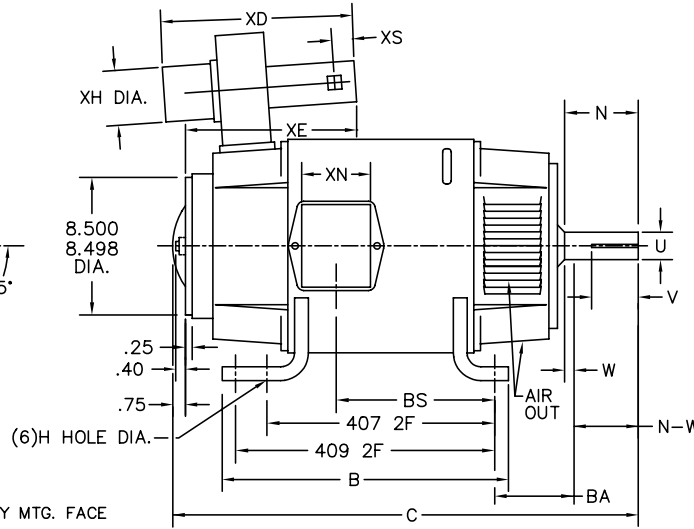
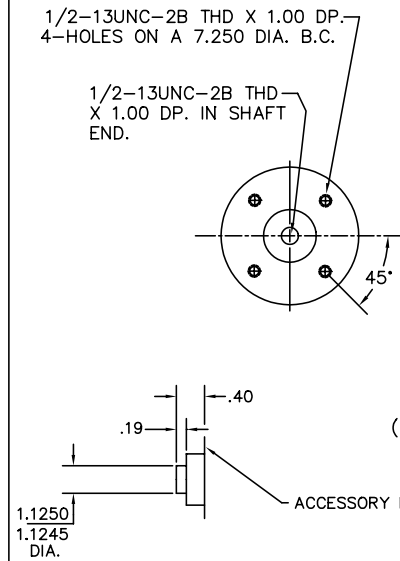
Part Detail							
Revision:	A	Status:	PRD/A	Change #:		Proprietary:	No
Type:	DC	Prod. Type:		Elec. Spec:	K0107A B	CD Diagram:	15209
Enclosure:	DPBV	Mfg Plant:		Mech. Spec:		Layout:	2340
Frame:	407AT	Mounting:	F1	Poles:	00	Created Date:	04-09-2015
Base:		Rotation:	R	Insulation:	F	Eff. Date:	10-25-2016
Field Type:		Literature:		Elec. Diagram:		Replaced By:	

Specs			
Enclosure:	DPBV		
Frame:	407AT		
Frame Material:	Steel		
Agency Approvals:	CSA		
Bearing Grease Type:	Polyrex EM (-20F +300F)		
Drip Cover:	No Drip Cover		
Duty Rating:	CONT		
Feedback Device:	NO FEEDBACK		
Field Winding Type:	STR. SHUNT		
Heater Indicator:	No Heater		
Insulation Class:	F		
Lifting Lugs:	Standard Lifting Lugs		
Mounting Arrangement:	F1		
Shaft Extension Location:	Pulley End		
Shaft Ground Indicator:	No Shaft Grounding		
Shaft Slinger Indicator:	No Slinger		

<b>Motor Standards:</b>	NEMA		
-------------------------	------	--	--

Nameplate NP1734											
CAT.NO.	D50150P-BV			MODEL	T40R8003						
HP	150	RPM	1750/2000		FRAME	0407AT					
ARM V	500	ARM A	238.00		WOUND	STR. SHUNT					
FLD V	150/300	FLD A	5.40								
CONN		OHMS				CL	F				
ENCL	DPBV	DUTY	CONT			MX AMB	40				
P CODE	C	CTSR				SER.F.	1.0				
S/N			E/S	K0107A B							
	BRUSH:40019-3										
O.D.E. BRG.	6213	D.E. BRG.	6214		BRUSH					QTY	

2340



FRAME	FOOT MOUNTING							D.E. SHAFT EXTENSION					DRIVE KEY		FRAME					
	BA	E	407 2F	409 2F	G	H	J	N	N-W	U	V	W	KEY-SQ.	KEY-LONG	A	B	C	D	O	P
407-9AT	6.63	8.00	18.00	22.00	.81	.938	4.00	5.44	5.25	2.625 <sup>1</sup>	5.00 <sup>4</sup>	.19	.625	4.00	20.00	24.00	40.13	10.00 <sup>3</sup>	20.19	20.38

FRAME	CONDUIT BOX							BLOWER								APPROXIMATE WEIGHT	
	AA	AB	AC	AF	BS	XL	XN	SIZE	XB	XD	XE	XH	XM	XJ	XK		XS
407-9AT	3	18.28	14.45	3.34	14.50	11.63	7.76	6	19.63	26.38	19.13	10.25	4.19	9.44	11.50	3.75	1355

- 1) SHAFT DIAMETERS ABOVE 1.500 TOLERANCE +.0000 -.0010
- 2) SHAFT DIAMETERS ABOVE 1.625 RUNOUT .003 T.I.R. MAX.
- 3) 'D' DIMENSION TOLERANCE +.000 - .060
- 4) 'V' DIMENSION IS MAX. HUB LENGTH ON SHAFT
- 5) CONDUIT BOX CAN BE ROTATED IN 90° STEPS ON ITS OWN AXIS.
- 6) ALL DIMENSIONS NOT NOTED ARE NOMINAL DIMENSIONS CONSULT FACTORY FOR TOLERANCES.

FOR F1 OR F2 CONDUIT BOX LOCATION SEE SALES ORDER

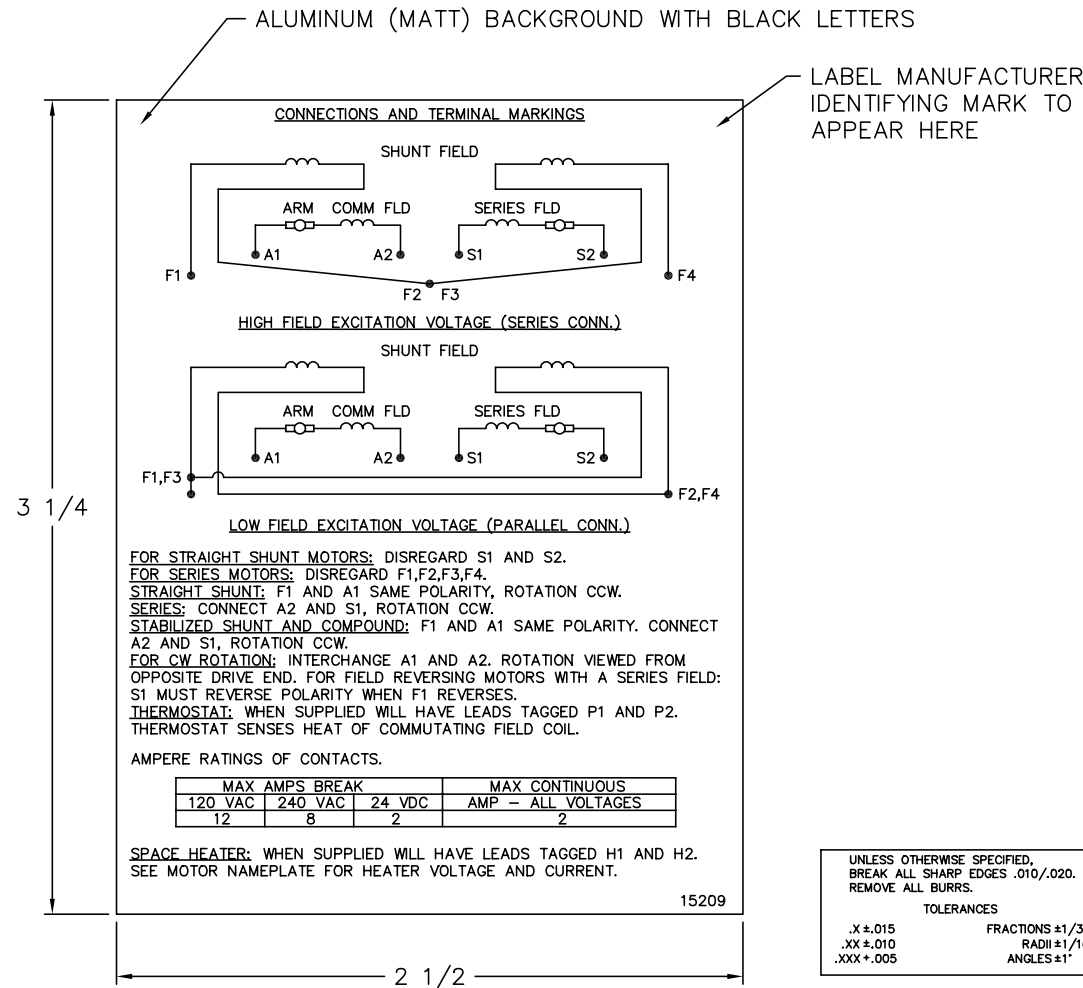
2340

MATL:	-		
REV:	-	NEW LOAD	
0422	SCALE: -	BY: RRL	REVISED: 01/27/98
	FILE: CHB00005828	TDR: 0127363	

**BALDOR ELECTRIC Co.**

DIM SHEET,407-9AT,DPBV,WITH 407 AND 409 MOUNTING

15209



**NOTE:**  
 MATERIAL .005 MINIMUM FULL HARD ALUMINUM DULL FINISH.  
 TEMP. RANGE -20°C TO +125°C MAXIMUM.  
 FOR INDOOR AND OUTDOOR MOUNTING BACK.  
 METAL, PRESSURE SENSITIVE BACK. MUST MEET CSA STANDARD.  
 THE CSA IDENTIFYING MARK OF THE LABEL MANUFACTURER MUST APPEAR IN THE UPPER RIGHT HAND CORNER AS INDICATED.

MATL: NOTED			
REV:	G	CHANGE ALL "NAMEPLATE" TEXT TO "LABEL"	
60Z91	SCALE: -	BY: BKW	REVISED: 02/19/97
	FILE: CHB00002485	TDR: 0115147	

**BALDOR ELECTRIC Co.**

LABEL, CONNECTIONS AND TERMINAL MARKINGS DC

15209