

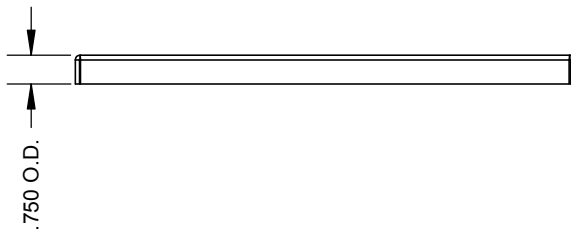
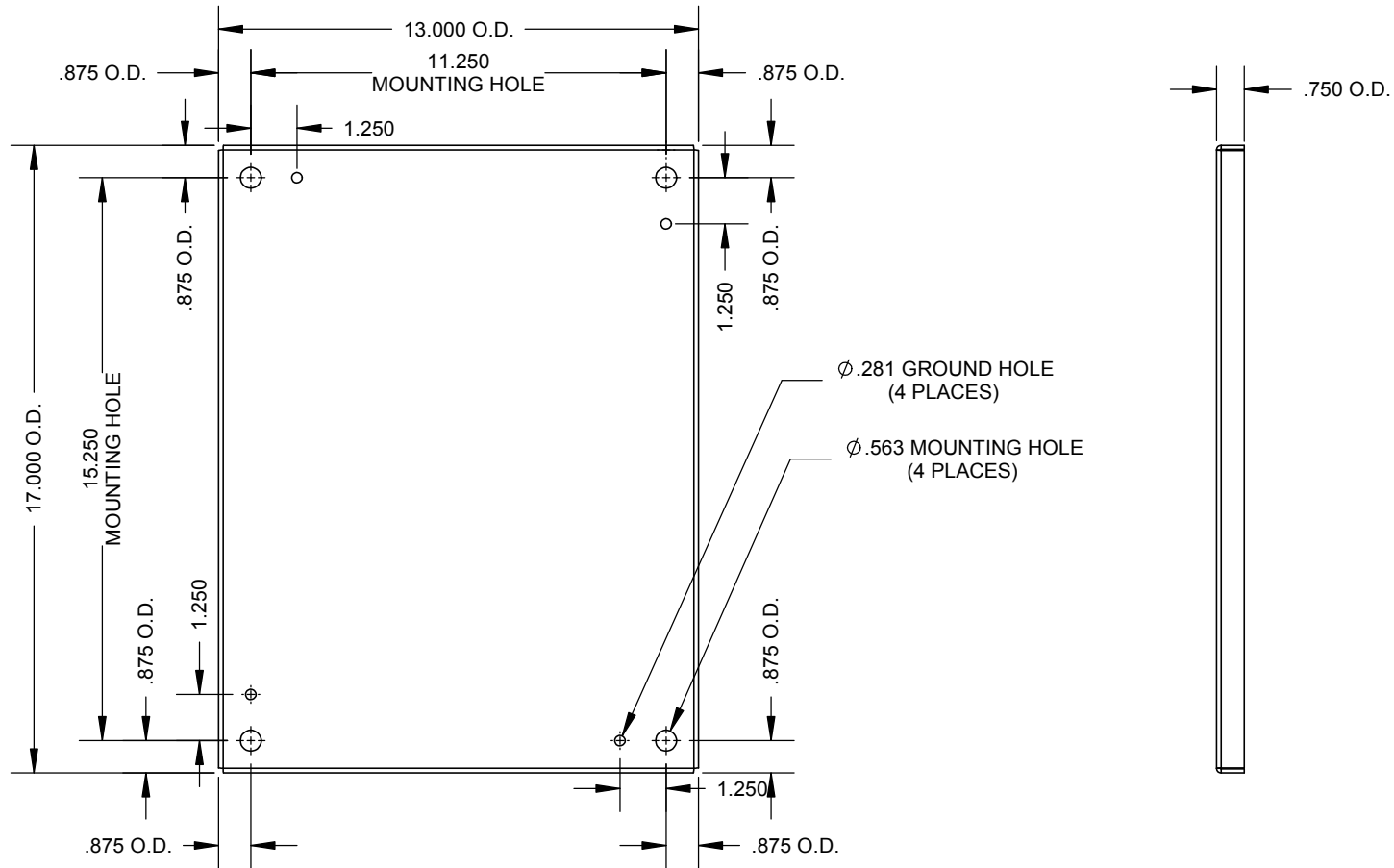



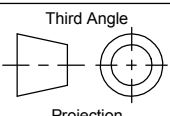
Catalog Number: A-20P16
Item Description: STEEL PANELS
UPC Code: 784572225473

Brand Name: Milbank
Type: Panel for Mounting Electronic Controls
Application: Enclosure Accessory
Material: Steel
Shape: Rectangle
Color: White
Mounting: Stud Mount

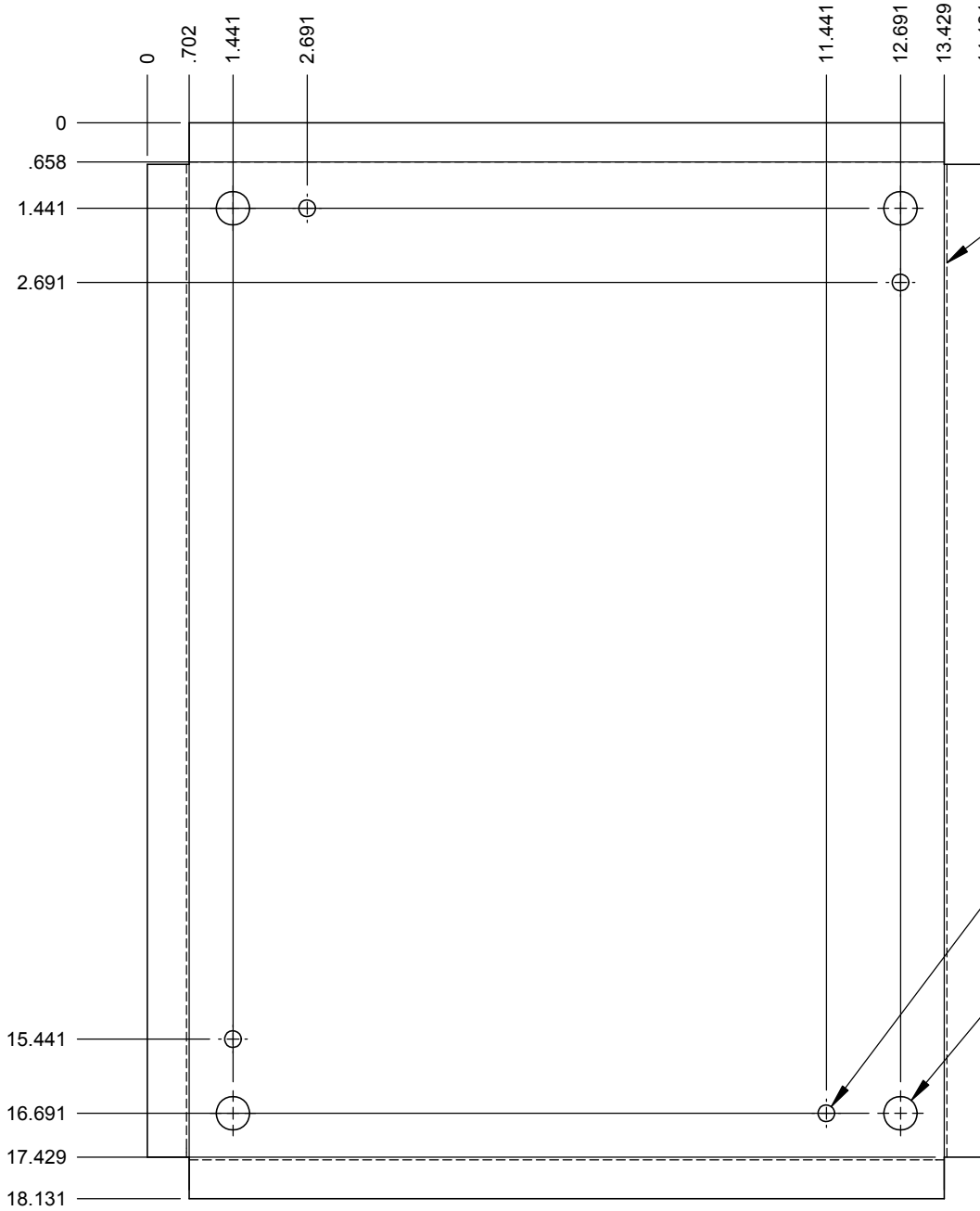


Utility requirements may vary. Always consult the serving utility for their requirements prior to ordering or installing this equipment. This product must always be installed by a licensed electrician. Installation of this equipment may require local electrical inspector approval.



Material:	12 GA. GALV.	 MILBANK <small>ENERGY AT WORK</small>	General Offices: Kansas City, MO		
Finish:	PAINTED WHITE		Title:	BACK PANEL 20 X 16 ENCLOSURE	
Tolerances: Unless Specified Otherwise X.X ±.1 X.XX ±.03 X.XXX ±.015 X° ±2°		 Third Angle Projection		Catalog No.:	A-20P16
		Ref:		eECR2819	
		Drawing No.:		1012348	
Scale:	NTS	Checked By:		Date:	7/31/14
Drawn By:	AJS	Approved By:		Sheet	1 of 2


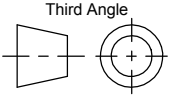
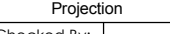
**	7/31/14	FIRST RELEASE	AJS			
----	---------	---------------	-----	--	--	--



BREAK LINE
FORM DOWN
(4 PLACES)

Ø.281 GROUND HOLE
(4 PLACES)

Ø.563 MOUNTING HOLE
(4 PLACES)

Material:	12 GA. GALV.	 MILBANK <small>ENERGY AT WORK</small>	General Offices: Kansas City, MO		
Finish:	PAINTED WHITE		Title:	BACK PANEL 20 X 16 ENCLOSURE	
Tolerances: Unless Specified Otherwise X.X ±.1 X.XX ±.03 X.XXX ±.015 X° ±2°		Third Angle 		Catalog No.:	A-20P16
		Projection 		Ref:	eECR2819
				Drawing No.:	1012348
Scale:	NTS	Checked By:		Date:	7/31/14
Drawn By:	AJS	Approved By:		Sheet	2 of 2

**	7/31/14	FIRST RELEASE	AJS			
----	---------	---------------	-----	--	--	--