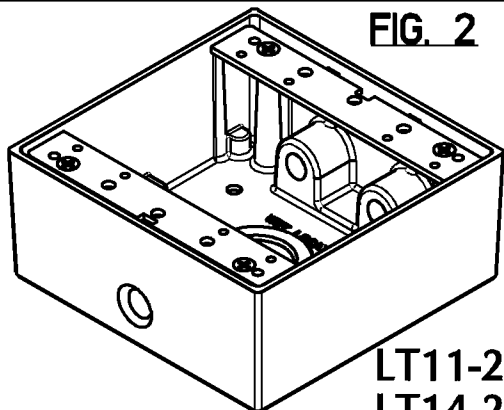
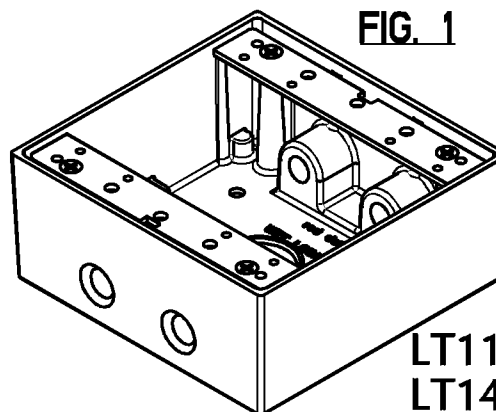
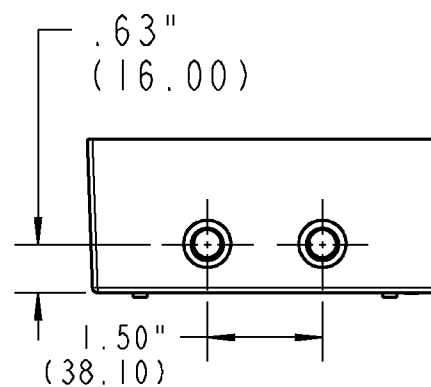
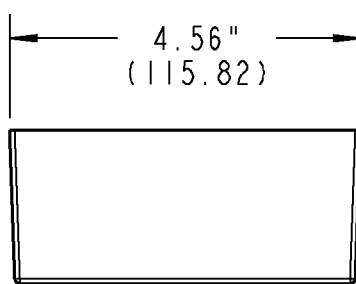
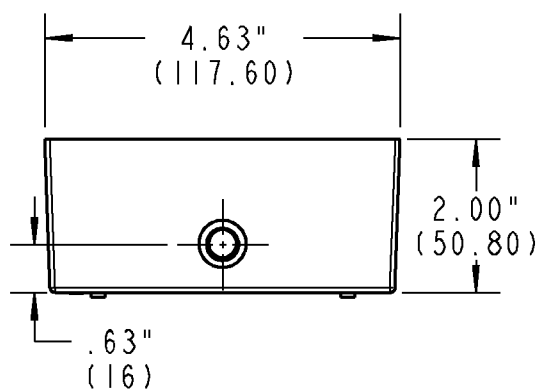


**FIG. 2****LT11-2-FP
LT14-2-FP****FIG. 1****LT11-3-FP
LT14-3-FP****NOTES:**

1. MATERIAL: CorroStall ALUMINUM ALLOY
2. FINISH: AS CAST

LT14-2-FP	4	3/4" (21)	AS CAST	2
LT11-2-FP	4	1/2" (16)	AS CAST	2
LT14-3-FP	5	3/4" (21)	AS CAST	1
LT11-3-FP	5	1/2" (16)	AS CAST	1
CAT. NO.	NO. OF OUTLET HOLES	OUTLET HOLE DIA.	FINISH	FIG. NO.

GENERAL NOTES

1. ALL DIMENSIONS ARE FOR REFERENCE ONLY.
2. DIMENSIONS IN BRACKETS [] ARE IN METRIC UNITS.

REVISIONS

*** SEE ERN (****)
FOR APPROVAL SIGNATURES
& RELEASE DATE.
PROJECT NO: ****

Thomas & Betts
www.tnb.com

DESCRIPTION:

**TWO GANG OUTLET BOX
WITH CorroStall ALUMINUM ALLOY**

ORIGINAL PROJECT NO / (ERN NO)

RD55699 / (2007461)

SHEET NO:

1 OF 1

REV. NO:

DRAWING NO:

WSD-000310