

M-13866

1

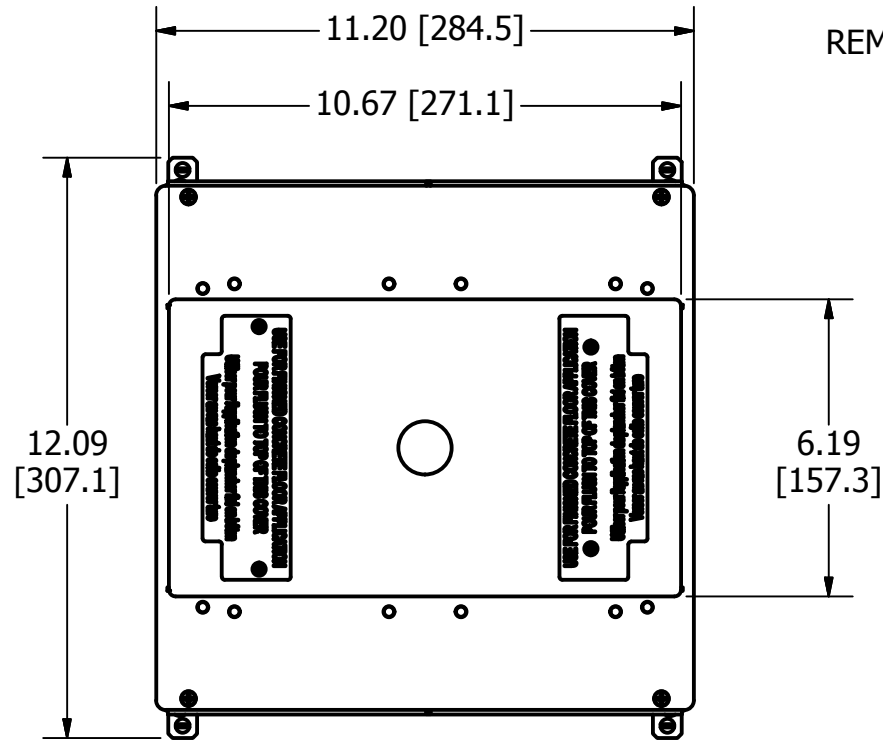
CONCENTRIC KNOCKOUTS

LOCATION	QUANTITY	TRADE SIZE
ENDS	2/END	1/2", 3/4", 1"
SIDES	2/SIDE	1/2", 3/4", 1"
BOTTOM	4	1/2", 3/4"
BOTTOM	4	1", 1-1/4"

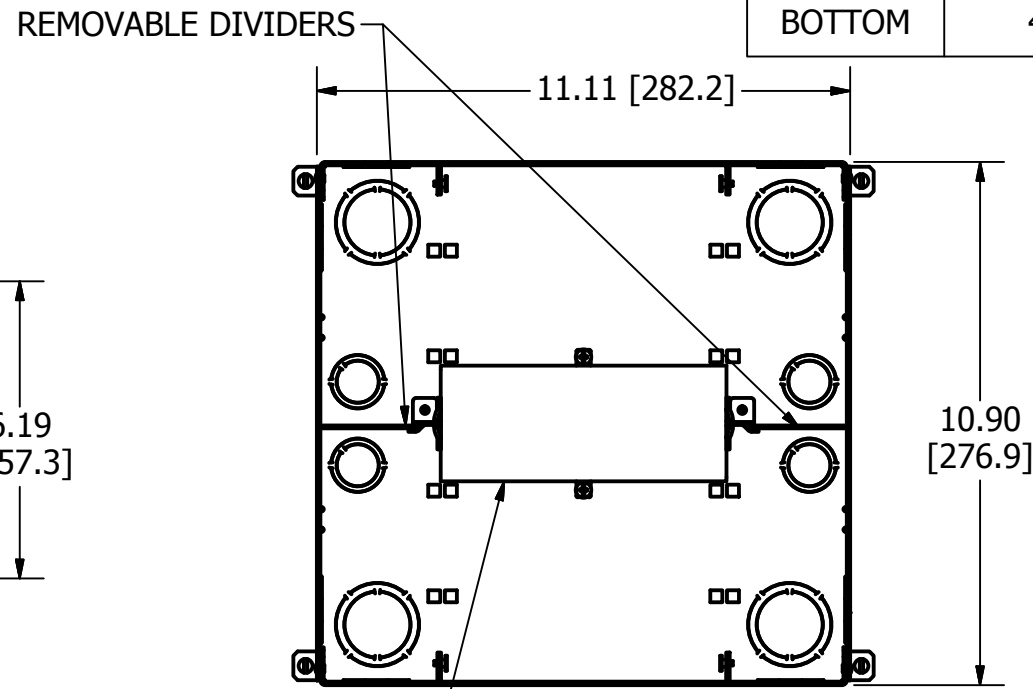
LIST OF PARTS

DESCRIPTION	MATERIAL	FINISH
BOX ASSEMBLY	16 GA. STEEL	ZINC **
TOP MOUNTING ASSY	14 GA. STEEL	ZINC
GROUND WIRES	COPPER	
WIRING CHANNEL	16 GA. STEEL	ZINC
REMOVABLE DIVIDERS	THERMOPLASTIC	
FASTENERS	STEEL	ZINC
FLUSH TEMP COVER	16 GA. STEEL	ZINC
RAISED TEMP COVER	THERMOPLASTIC	YELLOW

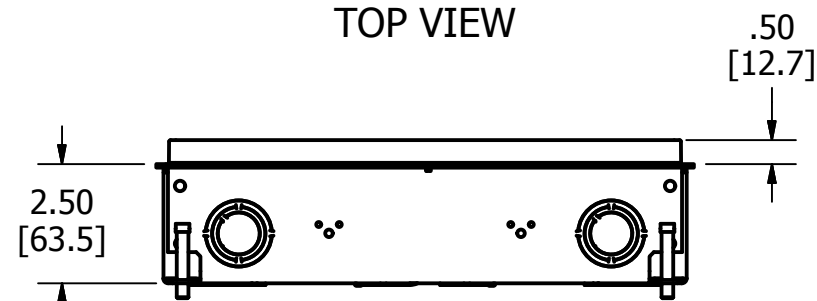
DIMENSION SHEET FOR CAT. NO. CFB4G25, CFB4G25CR



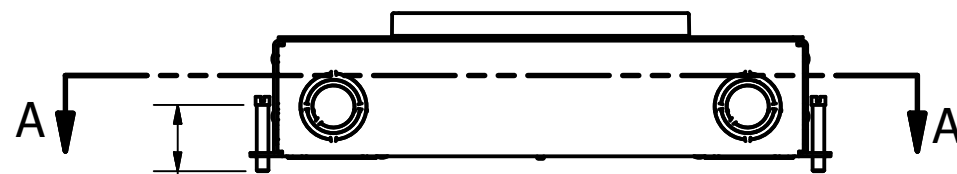
TOP VIEW



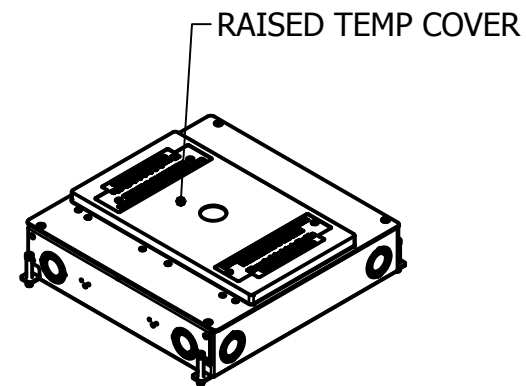
SECTION A-A  
VIEW THROUGH BOX BELOW TOP



END VIEW



4X 1.38 [35.1]  
LEVELING SCREW  
SIDE VIEW



ISOMETRIC

\*\* CATALOG NO. CFB4G25CR BOX ASSEMBLY IS GALVANIZED AND EPOXY COATED ON EXTERIOR SURFACE.

NOTES:

1. ALL DIMENSIONS ARE IN INCHES AND [MILLIMETERS].
2. PRODUCT IS cULus LISTED. COMPLIES WITH UL 514A.
3. EACH GANG SUPPLIED WITH 6" [152.4] 12 GA. AWG GROUND PIGTAIL.
4. MINIMUM CONCRETE POUR: 2.50" [63.5].
5. WIRING CHAMBER VOLUMES (RECESSED COVER) : (4) 26.5 IN<sup>3</sup> [434.3 CM<sup>3</sup>].
6. WIRING CHANNEL AREA: (2) .39 IN<sup>2</sup> [250 MM<sup>2</sup>].
7. WIRING CHAMBER VOLUMES (FURNITURE FEED) : (2) 118 IN<sup>3</sup> [1934 CM<sup>3</sup>].

CAGE CODE 74545

1	RELEASED PER DCN 23642	SBW	3/19/18
REV	DESCRIPTION	APP	DATE

THE DESIGN AND DIMENSIONS OF THE PRODUCT SHOWN ON THIS DRAWING ARE SUBJECT TO CHANGE WITHOUT NOTICE. DIMENSIONS ARE IN INCHES [mm].

TITLE  
CONCRETE FLOOR BOX, 4 GANG FOR RECTANGULAR COVER, SHALLOW



WIRING DEVICE-KELLEMS  
HUBBELL INCORPORATED  
SHELTON, CT

TOLERANCES UNLESS OTHERWISE SPECIFIED .XX = ±.01 .XXX = ±.005 ANGLE TOL. ±2'	DR. BY SBW	SCALE 1/4
	CHK. BY	DATE 3/5/2018

B

M-13866

1