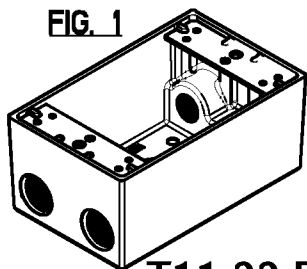




T&B Fittings

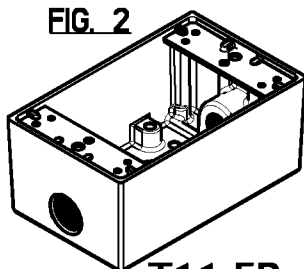


FIG. 1



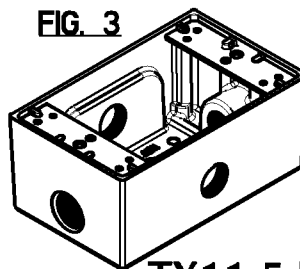
T11-22-FP
T14-22-FP

FIG. 2



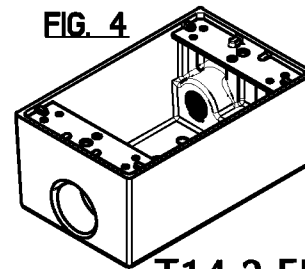
T11-FP
T14-PL-FP

FIG. 3

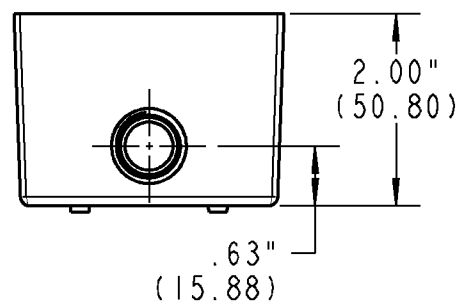
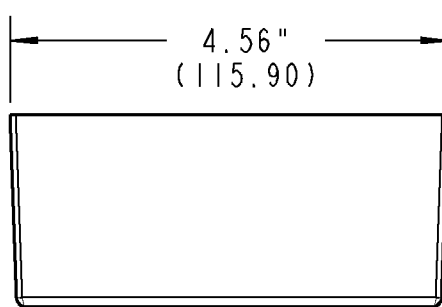
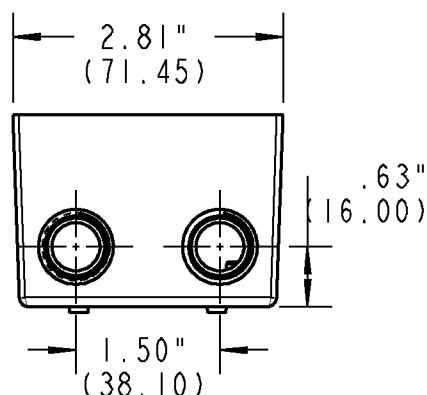


TX11-5-FP
TX14-5-FP

FIG. 4



T14-2-FP



NOTES:

1. MATERIAL: CorroStall ALUMINUM ALLOY
2. FINISH: AS CAST

T14-2-FP	4	3/4" (21)	AS CAST	4
TX14-5-FP	5	3/4" (21)	AS CAST	3
TX11-5-FP	5	1/2" (16)	AS CAST	3
T14-PL-FP	3	3/4" (21)	AS CAST	2
T11-FP	3	1/2" (16)	AS CAST	2
T14-22-FP	5	3/4" (21)	AS CAST	1
T11-22-FP	5	1/2" (16)	AS CAST	1
CAT. NO.	NO. OF OUTLET HOLES	OUTLET HOLE DIA.	FINISH	FIG. NO.

GENERAL NOTES

1. ALL DIMENSIONS ARE FOR REFERENCE ONLY.
2. DIMENSIONS IN BRACKETS [] ARE IN METRIC UNITS.

REVISIONS

*** SEE ERN (****) FOR APPROVAL SIGNATURES & RELEASE DATE.
PROJECT NO: ****

Thomas & Betts
www.tnb.com

DESCRIPTION:

**ONE GANG OUTLET BOX
WITH CorroStall ALUMINUM ALLOY**

ORIGINAL PROJECT NO / (ERN NO)

RD55699 / (2007461)

SHEET NO:

1 OF 1

REV. NO:

**

DRAWING NO:

WSD-000309