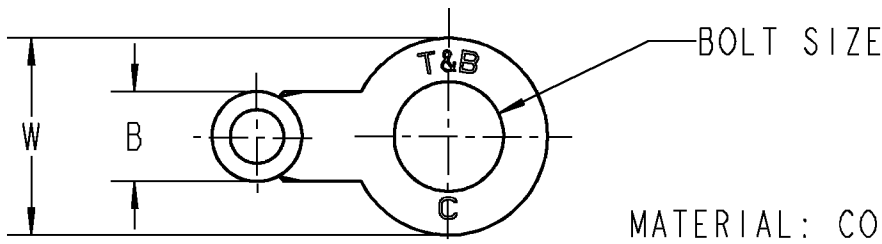
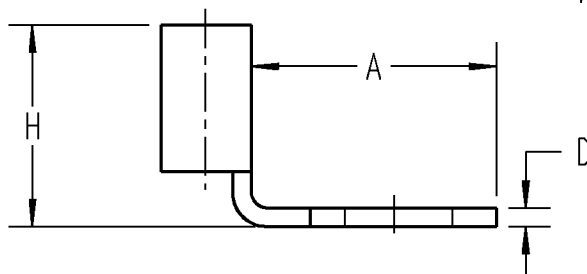


**T&B Sta-Kon**

MATERIAL: COPPER
FINISH: TIN PLATED
* FOR NICKEL PLATED TERMINALS
ADD NP SUFFIX TO CATALOG NUMBER.



ALL DIMENSIONS ARE APPROXIMATE, FOR REFERENCE ONLY.

CAT. NO*	WIRE SIZE	BOLT SIZE	W	A	B MAX.	D	H	TOOLS
C7U	#10 TO #12	#8	3/8	13/32	0.22	0.040	29/64	WT110M WT111M WT112M ERG2002 WT2000
C26U		#10	3/8	.45				
C33U		#6	5/16	3/8				
C36U		#10	5/16	3/8				
C70U		5/16	1/2	9/16				
C71U		1/4	1/2	9/16				
C72U		5/16	19/32	11/16				
C73U		3/8	19/32	11/16				
C74U		7/16	13/16	29/32				
C75U		1/2	13/16	29/32				
C77U		#8	5/16	3/8				

GENERAL NOTES

1. ALL DIMENSIONS ARE FOR REFERENCE ONLY.
2. DIMENSIONS IN BRACKETS [] ARE IN METRIC UNITS.

REVISIONS

** SEE ERN (****)
FOR APPROVAL SIGNATURES
& RELEASE DATE.
PROJECT NO: ****

Thomas & Betts
www.tnb.com

DESCRIPTION:

**SPECIAL STA-KON
TERMINALS UPRIGHT**

ORIGINAL PROJECT NO / (ERN NO)

TM401341 / (2007805)

SHEET NO:

1 OF 2

REV. NO:

-

DRAWING NO:

WSD-000330

CAT. NO*	WIRE SIZE	BOLT SIZE	W	A	B MAX.	D	H	TOOLS
D26U	#7 TO #9	#10	13/32	1/2	0.31	.065	9/16	ERG2005 WT3185 TBM6/TBM6S (11803 DIE)
D36U		#10	15/32	9/16				
D71U		1/4	15/32	9/16				
D72U		5/16	19/32	23/32				
D73U		3/8	19/32	23/32				
D74U		7/16	13/16	7/8				
D75U		1/2	13/16	7/8				
E26U	#5 & #6	#10	15/32	9/16	0.36	.065	9/16	WT3185 TBM6/TBM6S (11805 DIE)
E71U		1/4	15/32	9/16				
E72U		5/16	19/32	23/32				
E73U		3/8	19/32	23/32				
E74U		7/16	13/16	7/8				
E75U		1/2	13/16	7/8				
F26U	#3 & #4	#10	15/32	9/16	0.42	.070	19/32	WT3185 TBM6/TBM6S (11806 DIE)
F71U		1/4	15/32	9/16				
F72U		5/16	19/32	3/4				
F73U		3/8	19/32	3/4				
F74U		7/16	13/16	29/32				
F75U		1/2	13/16	29/32				

Thomas & Betts
www.tnb.com

DESCRIPTION:

**SPECIAL STA-KON
TERMINALS UPRIGHT**

SHEET NO:

2 OF 2

REV. NO:

-

DRAWING NO:

WSD-000330