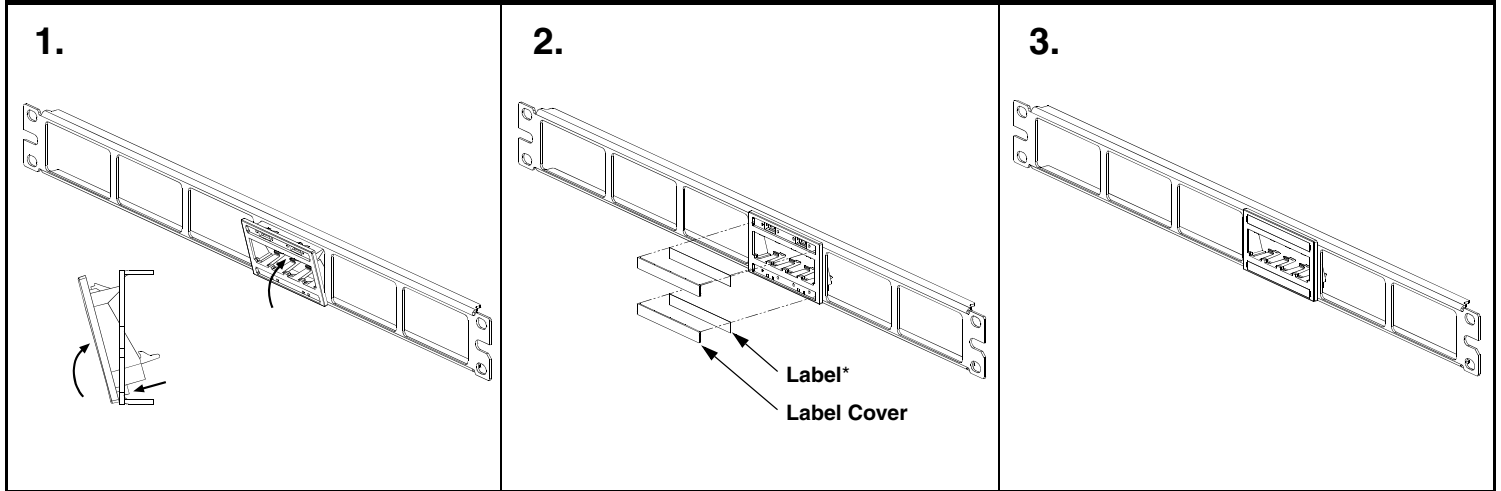


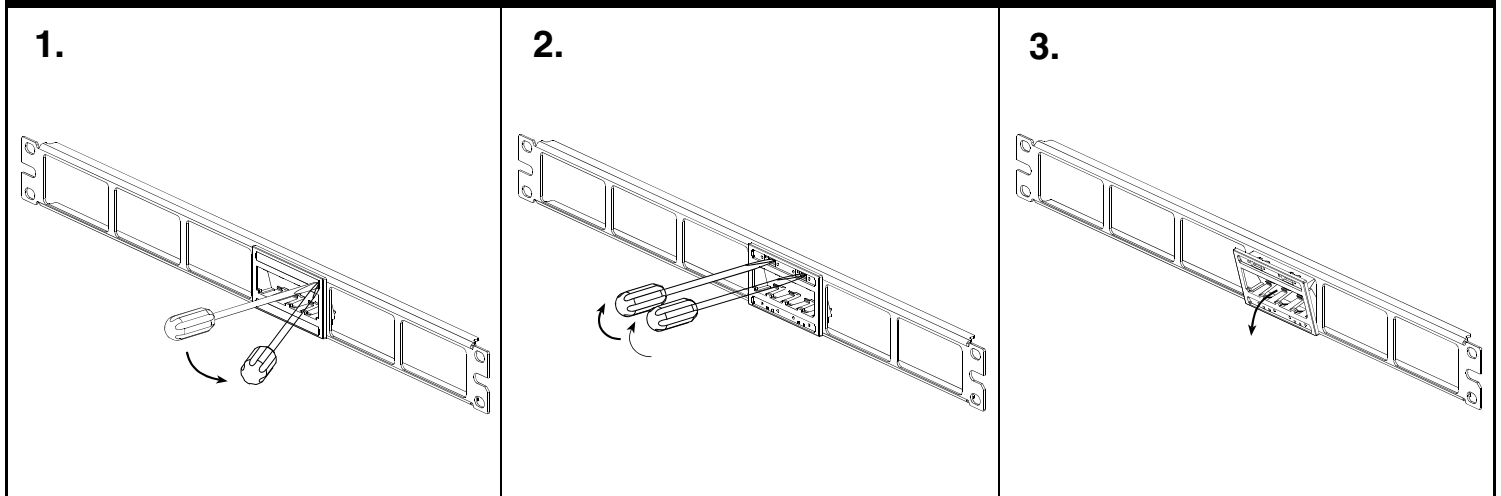
UICPPL4BL

UICPP2L4BL

Faceplate Installation

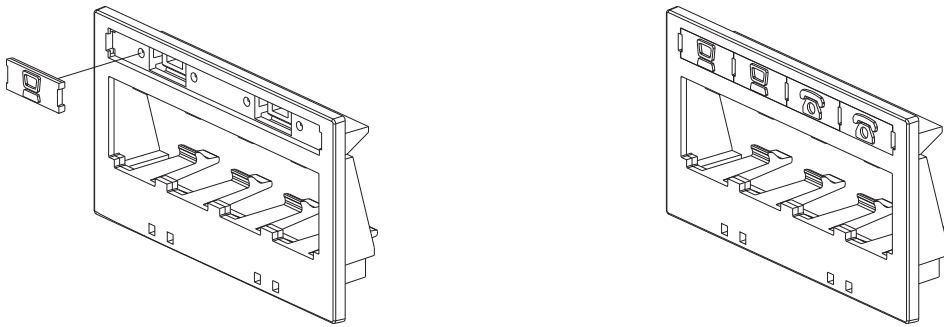


Faceplate Removal



* Write on labels are not included with these Faceplates per TIA/EIA-606-A standard which states: "To maximize legibility, all labels shall be printed or generated by a mechanical device, and shall not be written by hand." (Refer to table on back side for label products)

Icon Installation (Icons sold as optional accessory)



Ultimate ID Label Part Numbers

Label Part #	Height	Length	Color	Std. Pkg. Qty.
Computer Printable Labels				
UILJ4	.236"	2.585"	White	5 sheets
Non-Adhesive Label Cassette (for use with PanAcea LS7 Thermal Transfer Printer)				
**UILS7BW	1/4"	26.2'	Black / White	1

** See Panduit LS7 Operations Manual to explain serialized function for label printing and page function for non-serialized label printing.

For Instructions in Local Languages
and Technical Support:

www.panduit.com/resources/install_maintain.asp

PANDUIT

www.panduit.com

E-mail:
cs@panduit.com

Fax:
(708) 444-6993