

Rittal – The System.

Faster – better – everywhere.

► TS Installation Bracket for L rails in TS, 482.6 mm (19") – DK 7827.480

Date : May 24, 2018

ENCLOSURES

POWER DISTRIBUTION

CLIMATE CONTROL

IT INFRASTRUCTURE

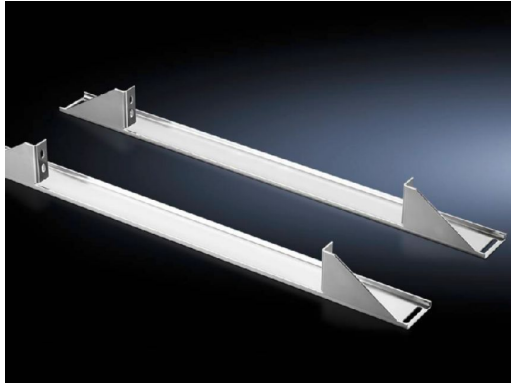
SOFTWARE & SERVICES

FRIEDHELM LOH GROUP



TS Installation Bracket for L rails in TS, 482.6 mm (19") – DK 7827.480

created: 24.05.2018 build on www.rittal.com/us-en



Product description

Version: Installation position, center

Description: The installation bracket is screw-fastened in the enclosure width on the housing frame. The profile rail is fastened to the bracket at the top and bottom. For partial enclosure configuration the installation brackets can be fastened to the TS system chassis, 17 x 73 mm, on the outer mounting level of the enclosure frame.

Benefits: The brackets ensure optimum clearance at the sides for cable routing
Depth-variable attachment possible using the attachment slots
Suitable for 19" partial expansion

Applications: For upgrading existing TS applications

Material: Carbon steel

Surface finish: Zinc-plated

Supply includes: Assembly components

Product features

Suitable for: Enclosure type: TS
Width: 800 mm (31 ")

Packaging unit: 2 pc(s).

Weight/packaging 3.58 kg (7.9 lb.)

unit:	
EAN:	4028177302631
Customs tariff number:	73182900
ETIM 6.0:	EC002625
ETIM 5.0:	EC002625
eCl@ss 8.0/8.1:	27189234
eCl@ss 7.0/7.1:	27180907
eCl@ss 6.0/6.1:	27180907
eCl@ss 5.1/5.1.4:	27182504
Product description (long):	DK-TS Einbauwinkel, For L-shaped mounting angles into TS, 482.6 mm (19"), For W: 800 mm