

Rittal – The System.

Faster – better – everywhere.

► **Base/plinth trim
panels, side, 200 mm
for base/plinth
components, front
and rear – TS
8602.060**

Date : May 25, 2018

ENCLOSURES

POWER DISTRIBUTION

CLIMATE CONTROL

IT INFRASTRUCTURE

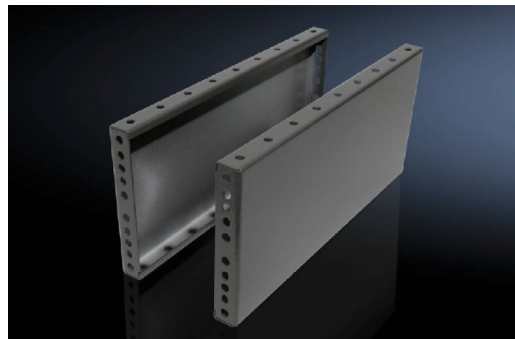
SOFTWARE & SERVICES

FRIEDHELM LOH GROUP



Base/plinth trim panels, side, 200 mm for base/plinth components, front and rear – TS 8602.060

created: 25.05.2018 build on www.rittal.com/us-en



Discontinued article.

This item will be discontinued on: 31.10.2018 |||This item is being replaced by: 8620043

Product description

Description:	To mount between the base/plinth components. For height 200 mm, two 100 mm base/plinth trim panels can be used.
Material:	Carbon steel
Surface finish:	Spray-finished
Color:	RAL 7022
Mounting tip:	100 mm side trim panels can be installed rotated through 90° to provide stabilization for bayed base/plinth components. Base/plinth baying brackets are required here
Supply includes:	2 plinth/base trim panels Assembly components

Product features

Suitable for:	Enclosure type: TS Enclosure type: SE Enclosure type: CM Enclosure type: TP Enclosure type: PC Enclosure type: IW Enclosure type: TS IT Depth: 600 mm (24 ")
----------------------	---

Dimensions:	Height: 200 mm (7.9 ")
--------------------	------------------------

Packaging unit:	2 pc(s).
Weight/packaging unit:	3.39 kg (7.5 lb.)
EAN:	4028177208698
Customs tariff number:	94039010
ETIM 6.0:	EC000721
ETIM 5.0:	EC000721
eCl@ss 8.0/8.1:	27182003
eCl@ss 7.0/7.1:	27189270
eCl@ss 6.0/6.1:	27189270
eCl@ss 5.1/5.1.4:	27182092
Product description (long):	TS Trim panel, sides, H: 200 mm, for W: 600 mm, RAL 7022, sheet steel
Approvals	
Certificates:	EAC