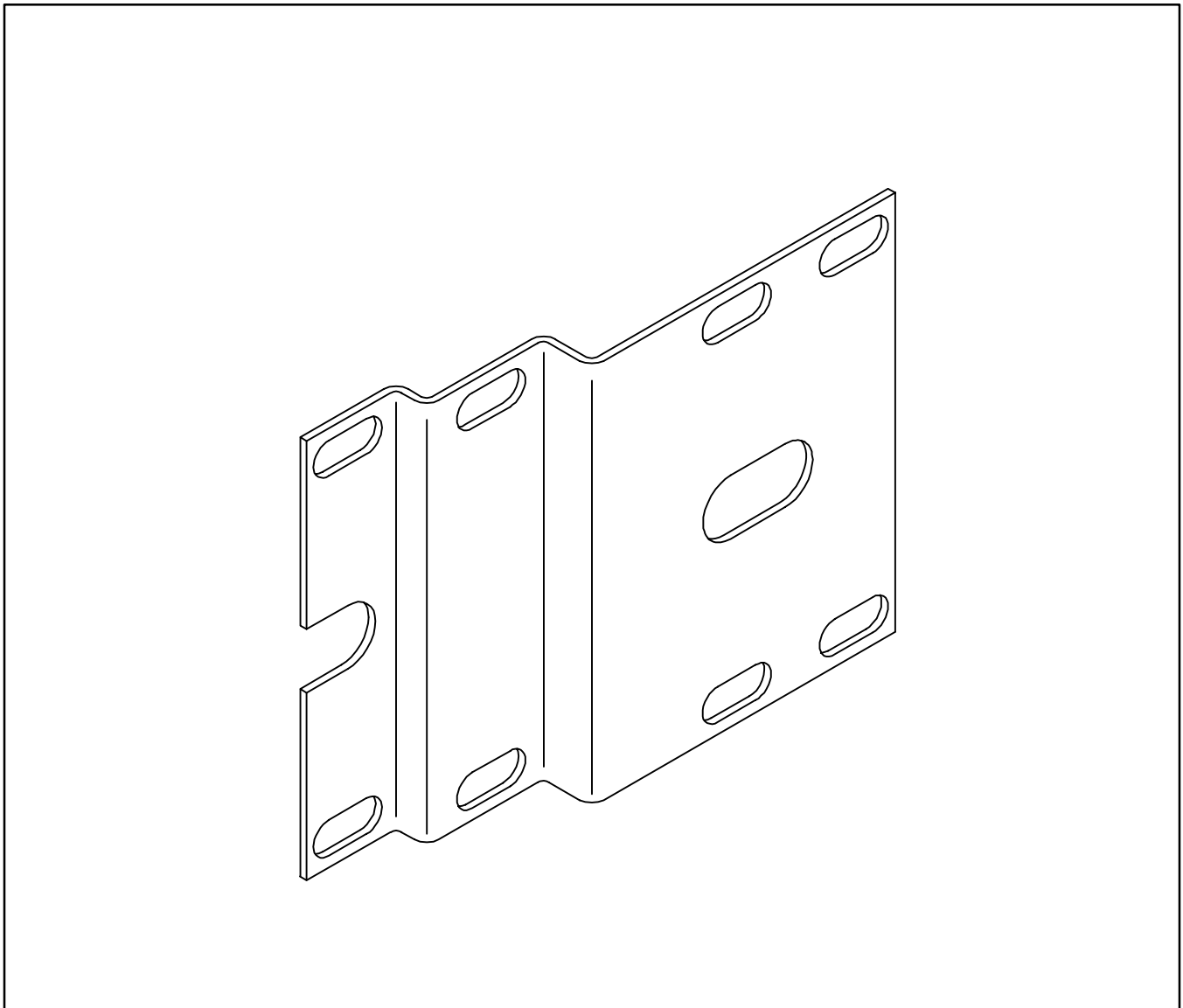
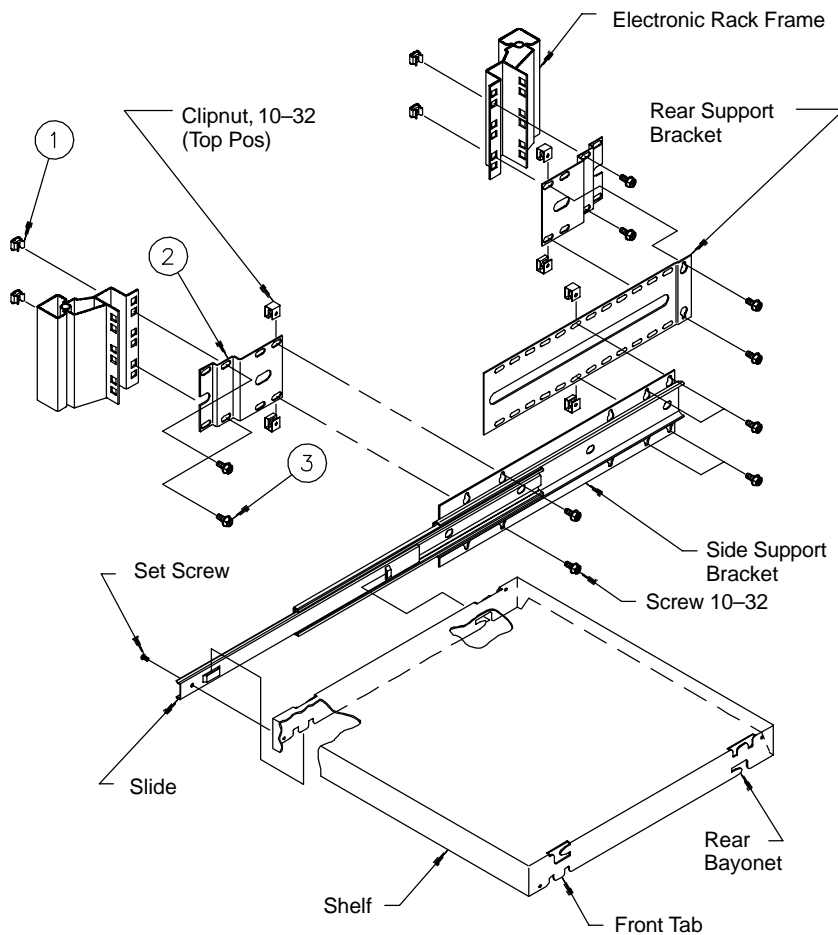


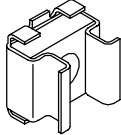
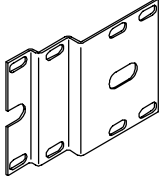
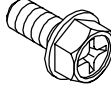
Pull-Out Shelf Bracket



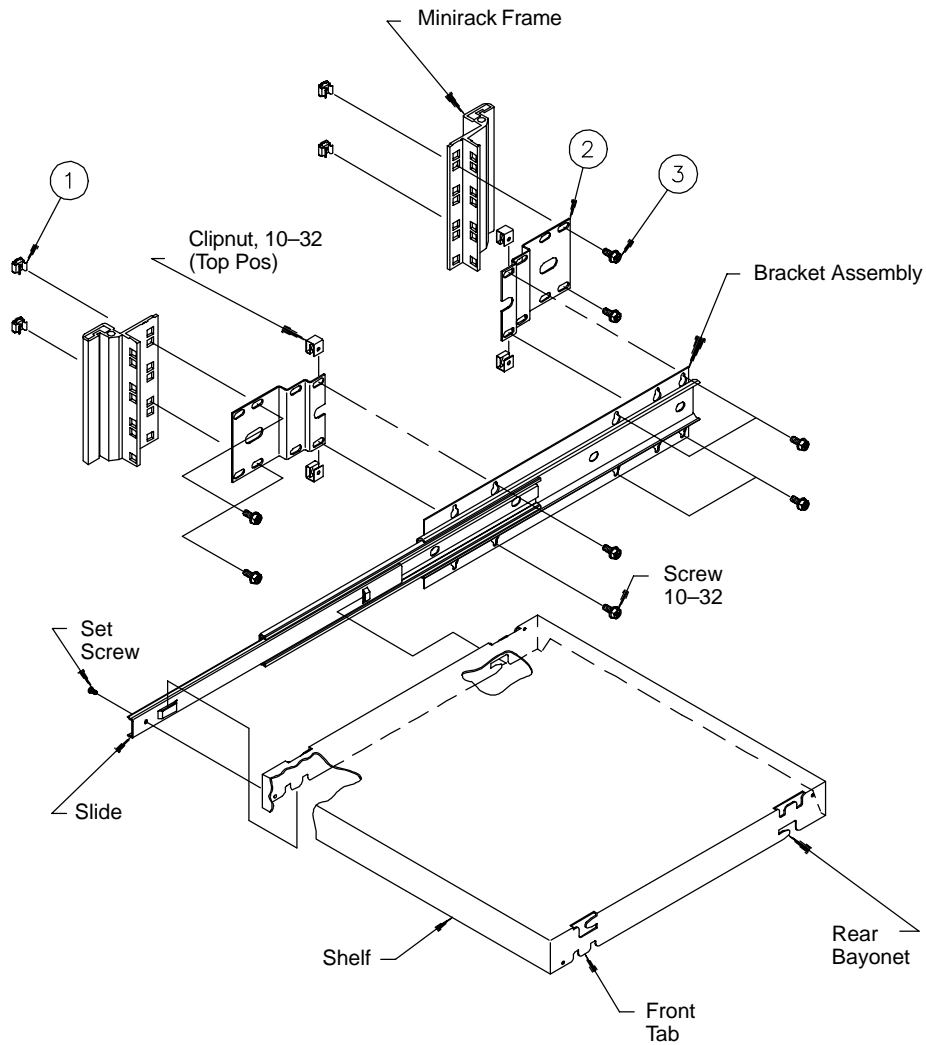
Pull-Out Shelf Bracket On Electronic Rack Frame



1. Install eight M6 cagenuts to electronic rack frame at desired shelf height.
2. Attach four shelf brackets to electronic rack frame using two M6 screws per shelf bracket.
3. Attach two 10-32 clipnuts to each shelf bracket.
4. On the top positioned clipnuts, install 10-32 screws. Thread screw until it is approximately 1/2 inch from being tight.
5. Determine which hole and slot will line up when the side and rear support brackets are mounted to electronic rack frame.
(applies only to 800mm deep electronic rack frame)
6. Attach clipnut to rear support; attach rear support to side support bracket using 10-32 screws.
(applies only to 800mm deep electronic rack frame)
7. Hang bracket assembly on the 10-32 screws. Install remaining 10-32 screws to bottom positions and torque to 4.3 Nm (38 in-lbs).
8. To install shelf, extend the slides completely to the locked position by slightly raising the front of the shelf and placing the rear bayonets into openings on the slides. Finally, lower the front tabs into openings on the slides.
9. Press latch on side of slide to free the slide for closing.
10. Set screws are optional for securing shelf to slide.
11. Shelf can be flipped over for use as a tray.

1	M6-1	2	M6-1
			
(8x)		(4x)	(8x)

Pull-Out Shelf Bracket On Minirack Frame



1. Install eight M6 cagenuts to minirack frame at desired shelf height.
2. Attach four shelf brackets to minirack frame using two M6 screws per shelf bracket.
3. Attach two 10-32 clipnuts to each shelf bracket.
4. On the top positioned clipnuts install 10-32 screws. Thread screw until it is approximately 1/2 inch from being tight.
5. Hang bracket assembly on the 10-32 screws. Install remaining 10-32 screws to bottom positions and torque to 4.3 Nm (38 in-lbs).
6. To install shelf, extend the slides completely to the locked position by slightly raising the front of the shelf and placing the rear bayonets into openings on the slides. Finally, lower the front tabs into openings on the slides.
7. Press latch on side of slide to free the slide for closing.
8. Set screws are optional for securing shelf to slide.
9. Shelf can be flipped over for use as a tray.



A Pentair Company

Hoffman Enclosures Inc.

2100 Hoffman Way
Anoka, MN 55303-1745
(763) 422-2211 Tel
www.hoffmanonline.com

Pentair Electronic Packaging

170 Commerce Drive
Warwick, RI 02886
(401) 732-3770
www.pentair-ep.com

Canada

Hoffman-Schroff
111 Grangeway Avenue, Suite 504
Scarborough, Ontario M1H 3E9
(416) 289-2770 Fax (416) 289-2883
1-800-668-2500 (Canada only)

Germany

Schroff GmbH
Langenalber Str. 96-100
75334 Straubenhardt
49 (07082) 794-0 Fax 49 (07082) 794-200
www.schroff.de

Great Britain

Schroff UK Ltd.
Maylands Avenue
Hemel Hempstead, Herts HP2 7DE
44 (01442) 240471 Fax 44 (01442) 213508
www.schroff.co.uk

Sweden

Schroff Scandinavia AB
Box 2003
12821 Skarpnäck
46 08683 61 00 Fax 46 08683 61 99
www.schroff.se

France

Schroff Sas
Z.I., 4 rue du Marais
67660 Betschdorf
33 03 88 90 64 90 Fax 33 03 88 90 64 88
www.schroff.fr

Italy

Schroff srl
Viale Milano, 119
21013 Gallarate (Varese)
39 0331 79 40 03 Fax 39 0331 79 34 50

Singapore

Hoffman-Schroff Pte. Ltd.
#01-68/71 German Centre
25 International Business Park
Singapore 609916
65 5 62-78 90 Fax 65 5 62-78 99

Japan

Schroff K.K.
Nisso No. 13 Bldg. 4F
2-5-1 Shinyokohama
Kohoku-Ku, Yokohama shi
Kanagawa 222-0033
81 (045) 476-02 81 Fax 81 (045) 476-02 89

Finland

Schroff Scandinavia AB
Peräsimentie 8
03100 Nummela
358 09 222 68 00 Fax 358 09 222 38 86

Norway

Schroff Scandinavia AB
Bjoernerudveien 24
1266 Oslo
47 022 76 33 60 Fax 47 022 76 33 69