

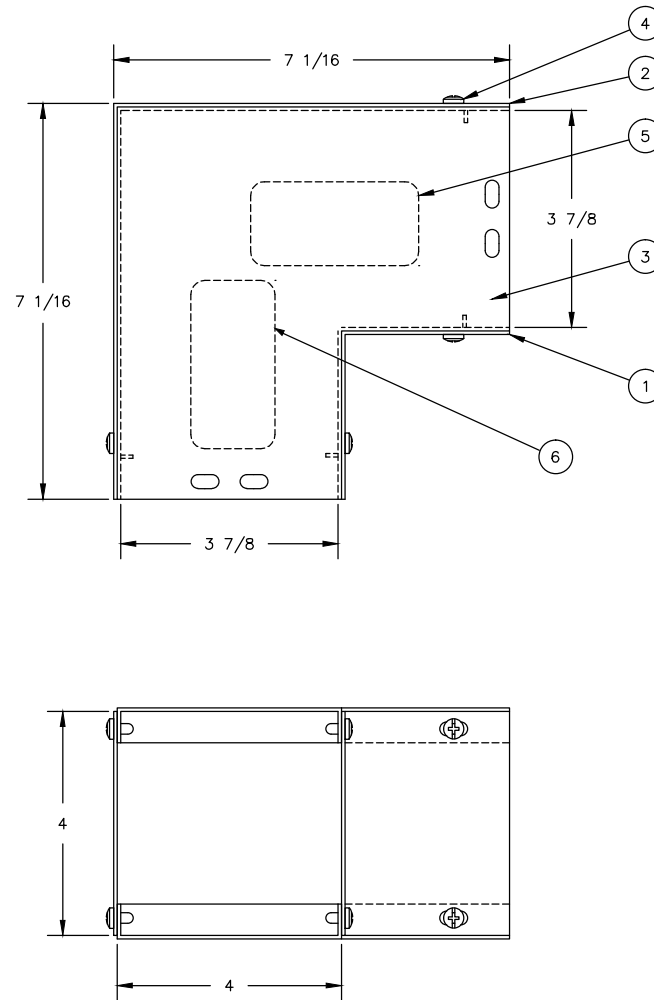


Catalog Number: 44L90C
Item Description: WIREWAY ACCESSORY
UPC Code: 784572106918

Brand Name: Milbank
Type: Wireway 90 Degree Side Access Elbow
Application: Wireway Accessory
Standard: UL Listed, Type 1
Cover Type: Screw Cover
Enclosure: Indoor Enclosure
Nominal Cross Section: 4x4
Material: Steel with Powder Coat Finish
Finish: ANSI 61 Gray
Knockouts: False



Utility requirements may vary. Always consult the serving utility for their requirements prior to ordering or installing this equipment. This product must always be installed by a licensed electrician. Installation of this equipment may require local electrical inspector approval.



BILL OF MATERIAL		
NO.	QTY.	DESCRIPTION
1	1	PLATE (IN) 1002302 (810966)
2	1	PLATE (OUT) 1002308 (810967)
3	2	SIDE 1002336 (810968)
4	8	SCREW 10-32 1001290 (704312)
5	1	LABEL (UL) 1002943
6	1	LABEL (RATING) 1002900

MATERIAL:	16 GA. STEEL		
FINISH:	MILBANK LIGHT GREY		
CATALOG NO:	44L90C		
TITLE:	SCREW COVER WIREWAY 90 DEG. ELBOW		
CUSTOMER:	MILBANK STANDARD		
DRAWING NO:	1001720		
MILBANK MFG. CO.			
KANSAS CITY, MO.		KOKOMO, IND.	
DRAWN BY	VJR	SCALE NOT TO SCALE	
CHECKED BY	SEM	DATE	
APPROVED		02-01-90	

PLOT SCALE= .672=1

REVISIONS:																								MILBANK MFG. CO.																																																																																																																																																																																																																																																																																																																																																																																																																																																																																																																																																																																																																																																																																																																																																																																																																																																																																																																																																																																																																																																																																																																																																																																																																																																																																																																																																																																		
A	12/13	UPDATE M2K	SMP	P4																																																																																																																																																																																																																																																																																																																																																																																																																																																																																																																																																																																																																																																																																																																																																																																																																																																																																																																																																																																																																																																																																																																																																																																																																																																																																																																																																																																																						