

BALDOR® • RELIANCE

Product Information Packet

MVM3461C

.37KW,1725RPM,3PH,60HZ,D71C,3320M,TEFC

Part Detail

Revision:	AK	Status:	PRD/A	Change #:		Proprietary:	No
Type:	AC	Elec. Spec:	33WG0673	CD Diagram:	CD0005A05	Mfg Plant:	
Mech. Spec:	33-1922	Layout:	33LY1922	Poles:	04	Created Date:	06-25-2007
Base:	N	Eff. Date:	04-18-2017	Leads:	9#18		

Specs

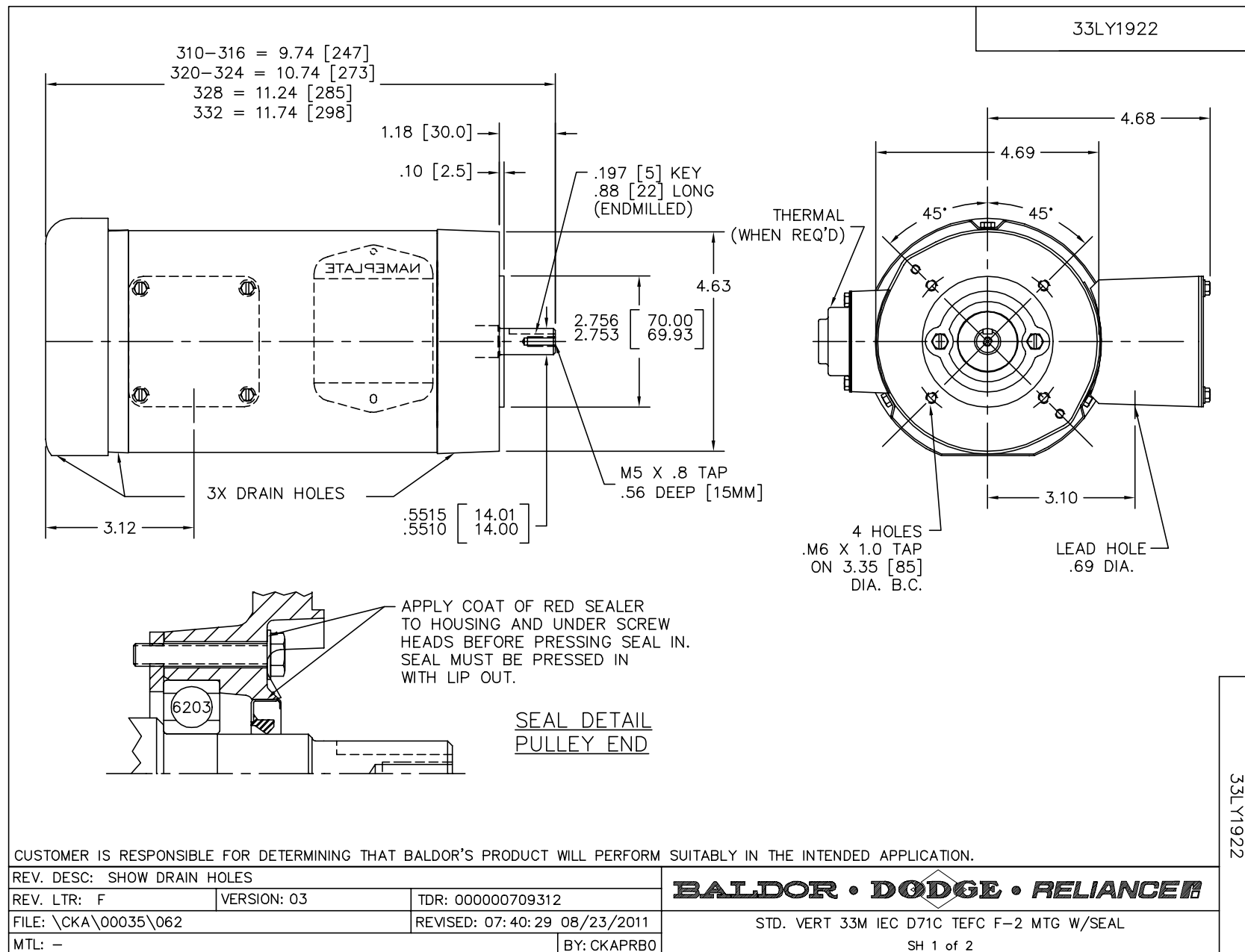
Catalog Number:	MVM3461C	Heater Indicator:	No Heater
Enclosure:	TEFC	Insulation Class:	B
Frame:	D71C	Inverter Code:	Not Inverter
Frame Material:	Steel	KVA Code:	-
Output @ Frequency:	.500 HP @ 60 HZ	Lifting Lugs:	No Lifting Lugs
Synchronous Speed @ Frequency:	1800 RPM @ 60 HZ	Locked Bearing Indicator:	Locked Bearing
Voltage @ Frequency:	208.0 V @ 60 HZ	Motor Lead Quantity/Wire Size:	9 @ 18 AWG
	230.0 V @ 60 HZ	Motor Lead Exit:	Ko Box
	460.0 V @ 60 HZ	Motor Lead Termination:	Flying Leads
Agency Approvals:	UR	Motor Type:	3320M
	CSA	Mounting Arrangement:	F2
Auxillary Box:	No Auxillary Box	Power Factor:	54
Auxillary Box Lead Termination:	None	Product Family:	General Purpose
Base Indicator:	No Mounting	Pulley End Bearing Type:	Ball
Bearing Grease Type:	Polyrex EM (-20F +300F)	Pulley Face Code:	C-Face
Blower:	None	Pulley Shaft Indicator:	Tapped & Key
Current @ Voltage:	1.200 A @ 460.0 V	Rodent Screen:	None
	2.400 A @ 230.0 V	RoHS Status:	ROHS COMPLIANT

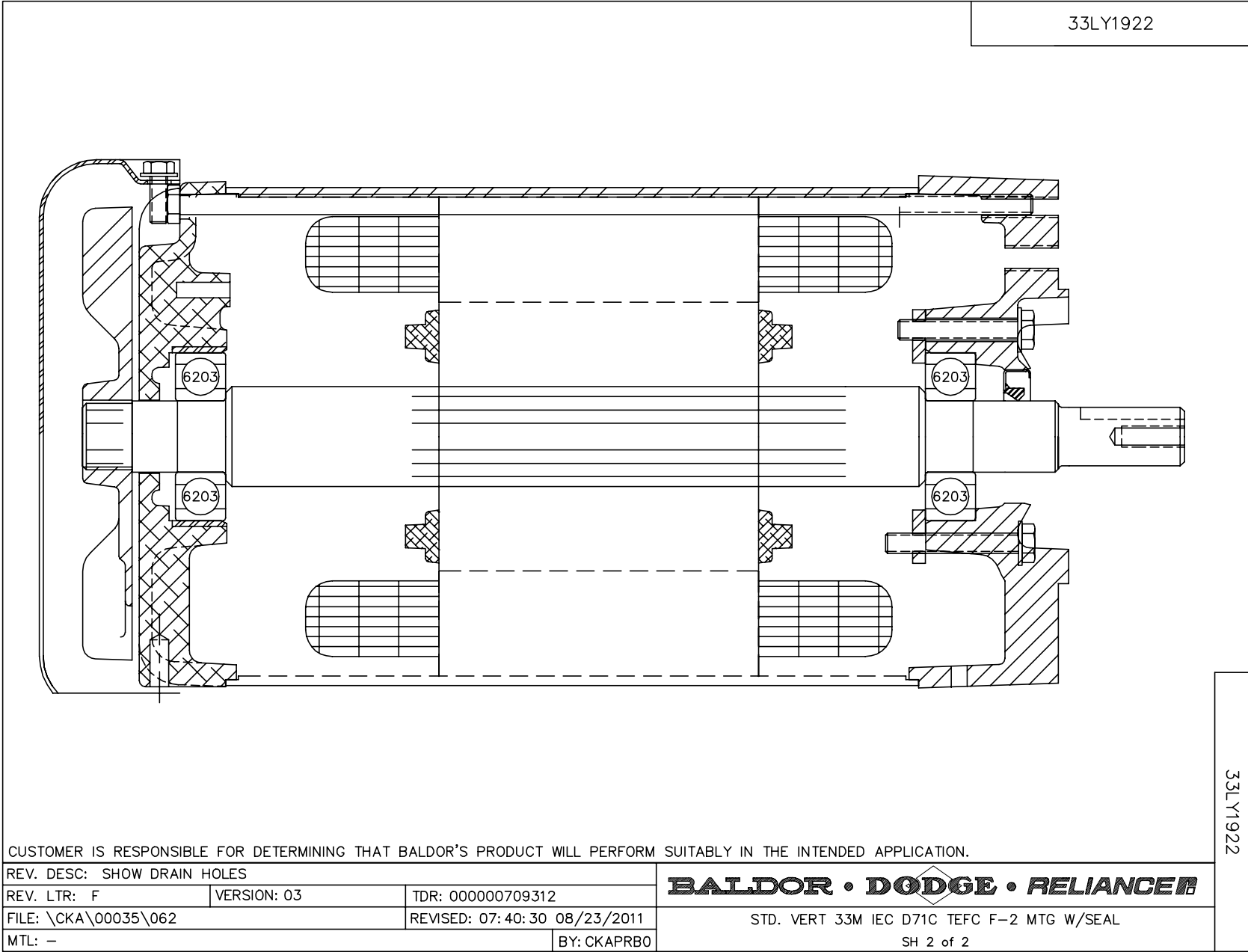
	2.600 A @ 208.0 V	Shaft Extension Location:	Pulley End
Design Code:	B	Shaft Ground Indicator:	No Shaft Grounding
Drip Cover:	No Drip Cover	Shaft Rotation:	Reversible
Duty Rating:	CONT	Shaft Slinger Indicator:	No Slinger
Electrically Isolated Bearing:	Not Electrically Isolated	Speed Code:	Single Speed
Feedback Device:	NO FEEDBACK	Motor Standards:	IEC
Feedback Signal:	NONE	Starting Method:	Direct on line
Frame Prefix:	D	Thermal Device - Bearing:	None
Front Face Code:	Standard	Thermal Device - Winding:	None
Front Shaft Indicator:	None	Vibration Sensor Indicator:	No Vibration Sensor

Nameplate NP1379L

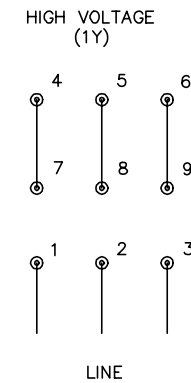
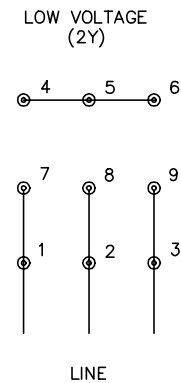
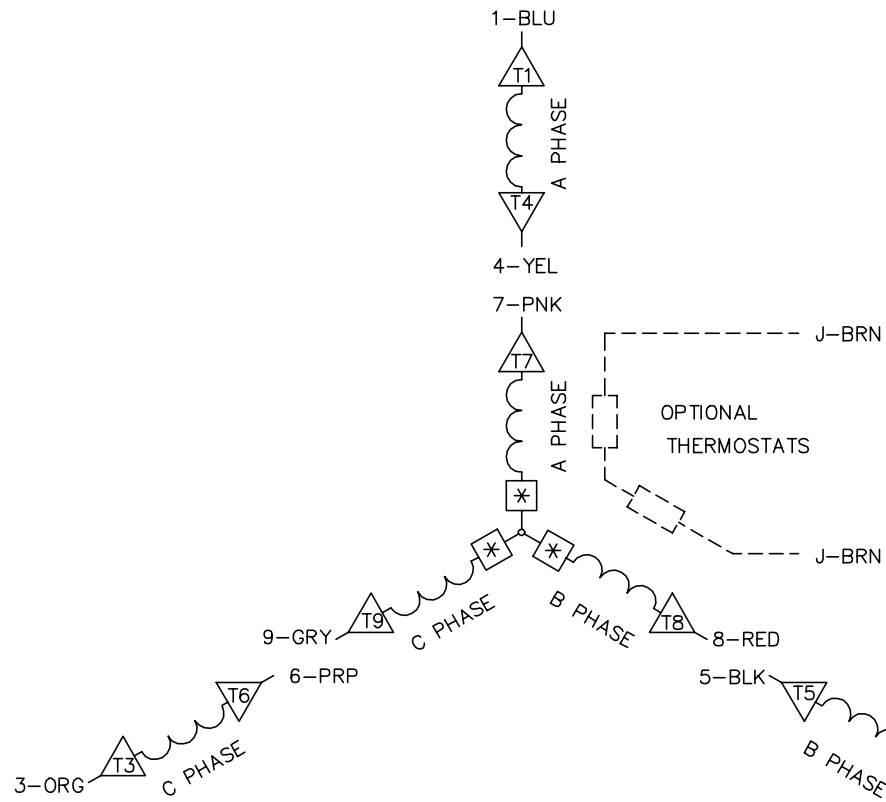
CAT.NO.	MVM3461C									
SPEC.	33-1922-673									
IEC FRAME	D71C				K.W. .37 T TE					
VOLTS	208-230/460									
AMP	2.6-2.4/1.2									
RPM	1725					I.P. 54				
HZ	60				PH 3		CL B			
SER.F.	1.00				DES B		CODE -			
NEMA-NOM-EFF	71				PF 54					
RATING	40C AMB-CONT									
CC					USABLE AT 208V 2.6					
DE	6203				ODE 6203					
SER. #										

No performance data has been
assigned to this product.





CD0005A05



NOTES:

1. INTERCHANGE ANY TWO LINE LEADS TO REVERSE ROTATION.
2. OPTIONAL THERMOSTATS ARE PROVIDED WHEN SPECIFIED.
3. ACTUAL NUMBER OF INTERNAL PARALLEL CIRCUITS MAY BE A MULTIPLE OF THOSE SHOWN ABOVE.
4. LEAD COLORS ARE OPTIONAL. LEADS MUST ALWAYS BE NUMBERED AS SHOWN.
5. =MAGNET WIRE COIL END WITH I.D. NUMBER.
6. =MAGNET WIRE COIL END WITH I.D. SYMBOL.
7. SEE CW PRINT FOR NEST TO NEST CROSSOVER CONNECTIONS.

REV. DESC: ADD NEST NOTE

REV. LTR: C

VERSION: 03

TDR: 000000445597

CD0005A05

FILE: \CKA\00024\847

REVISED: 12:51:06 11/15/2007

MTL: -

BY: CKMICRO

BALDOR • DODGE • RELIANCE

3PH, DV, 9 LEADS, CK

CD0005A05