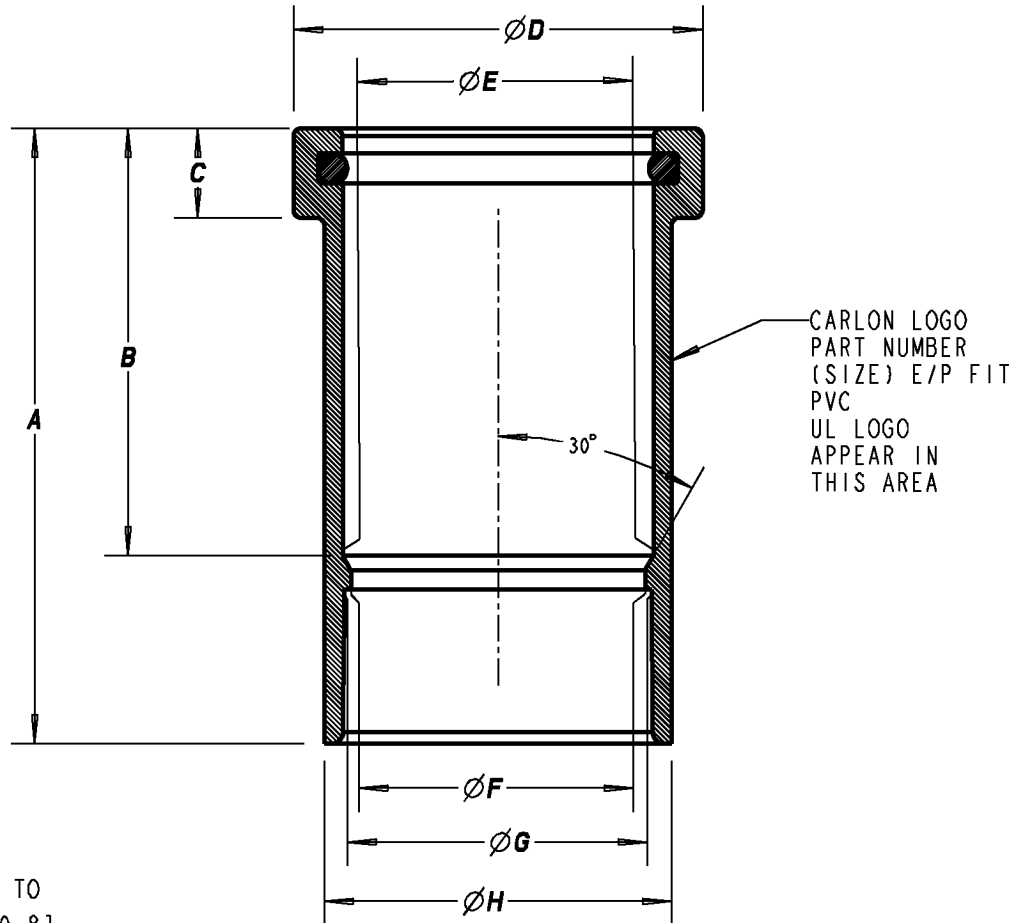


# Carlton®



**NOTES:**

- 1.) ALL COUPLINGS EXPAND TO A MAXIMUM OF 2.0" [50.8].
- 2.) ALL SIZES INCLUDE AN O-RING.

PART NUMBER	SIZE	A	B	C	ØD	ØE	ØF	ØG	ØH
E955D	1/2" [16]	3.25 [82.6]	2.40 [61.0]	.56 [14.2]	1.38 [35.0]	.86 [21.7]	.77 [19.6]	.84 [21.2]	1.11 [28.2]
E955E	3/4" [21]	3.5 [88.9]	2.54 [64.5]	.56 [14.2]	1.60 [40.6]	1.07 [27.2]	.93 [23.6]	1.05 [26.6]	1.32 [33.5]
E955F	1" [27]	3.75 [95.3]	2.64 [67.1]	.56 [14.2]	1.92 [48.8]	1.34 [33.9]	1.25 [31.8]	1.31 [33.2]	1.60 [40.6]
E955G	1 1/4" [35]	4.00 [101.6]	2.80 [71.1]	.69 [17.5]	2.41 [61.2]	1.68 [42.7]	1.58 [40.1]	1.66 [42.0]	1.95 [49.5]
E955H	1 1/2" [41]	4.50 [114.3]	3.18 [80.8]	.69 [17.5]	2.67 [67.8]	1.92 [48.8]	1.81 [46.0]	1.89 [48.1]	2.19 [55.6]
E955J	2" [53]	4.75 [120.7]	3.31 [84.1]	.69 [17.5]	3.16 [80.3]	2.40 [60.9]	2.27 [57.7]	2.37 [60.1]	2.68 [68.1]

**GENERAL NOTES**

1. ALL DIMENSIONS ARE FOR REFERENCE ONLY.
2. DIMENSIONS IN BRACKETS [ ] ARE IN METRIC UNITS.

**REVISIONS**

\*\*\* SEE ERN ( \*\*\*\* ) FOR APPROVAL SIGNATURES & RELEASE DATE. PROJECT NO: \*\*\*\*

**Thomas & Betts**  
www.tnb.com

DESCRIPTION: **EXPANSION COUPLINGS - SHORT**

ORIGINAL PROJECT NO / ( ERN NO )  
/ ( )

SHEET NO:  
1 OF 1

REV. NO:  
B

DRAWING NO:  
WSD-AC03964