

# Pull Boxes with Threaded Hubs and Covers

For use with Threaded Rigid Metal Conduit and IMC.

**NEC:**  
Listed for Ordinary Locations

## Applications

- Serve as pulling fittings.
- Provide openings for splicing.
- Make straight connections and 90° bends in conduit runs.
- Permit access to conductors for maintenance.

## Features

- Roomy interiors, more wiring space.
- Accurately tapped, tapered threads (NPT) for tight, rigid joints and ground continuity.

## Standard Materials

- Bodies and covers: steel
- Hubs: malleable iron or steel
- Cover bolts: trade sizes 1/2" thru 1-1/2" are zinc plated; trade sizes 2" thru 6" are brass

## Standard Finish

- Zinc electroplate, chromate and epoxy powder coat.

## Options

- Custom lengths up to 1828.8 mm (72 in) available, contact your local sales representative.

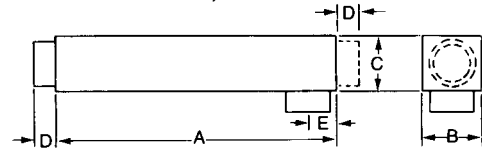


PTB

PTC



PTB, PTC Gasket



## NEC Certifications and Compliances

- UL Standard: 514A
- UL Listed: E2527

Catalog Numbers		Gaskets for PTC and PTB	Hub Size (Inches)	Pull Box Dimensions (Millimeters (Inches))				
Straight PTC Box	90° PTB Box			A	B	C	D	E
<b>12-inch</b>								
1200	1250	GK-12-100	1	304.8 (12.00)	55.6 (2.19)	54.1 (2.13)	21.3 (0.84)	23.9 (0.94)
1201	1251	GK-12-150	1-1/4	304.8 (12.00)	63.5 (2.50)	62.0 (2.44)	26.9 (1.06)	29.5 (1.16)
1202	1252	GK-12-150	1-1/2	304.8 (12.00)	63.5 (2.50)	62.0 (2.44)	26.9 (1.06)	35.1 (1.38)
1203	1253	GK-12-200	2	304.8 (12.00)	84.8 (3.34)	84.1 (3.31)	33.3 (1.31)	42.9 (1.69)
<b>18-inch</b>								
1211	—	GK-18-150	1-1/4	457.2 (18.00)	63.5 (2.50)	62.0 (2.44)	26.9 (1.06)	29.5 (1.16)
1212	—	GK-18-150	1-1/2	457.2 (18.00)	63.5 (2.50)	62.0 (2.44)	26.9 (1.06)	35.1 (1.38)
1213	—	GK-18-200	2	457.2 (18.00)	84.8 (3.34)	84.1 (3.31)	33.3 (1.31)	42.9 (1.69)
1214	—	GK-18-250	2-1/2	457.2 (18.00)	122.2 (4.81)	120.7 (4.75)	40.4 (1.59)	46.0 (1.81)
<b>24-inch</b>								
1222	1272	GK-24-150	1-1/2	609.6 (24.00)	63.5 (2.50)	62.0 (2.44)	26.9 (1.06)	35.1 (1.38)
1223	1273	GK-24-200	2	609.6 (24.00)	84.8 (3.34)	84.1 (3.31)	33.3 (1.31)	42.9 (1.69)
1224	1274	GK-24-300	2-1/2	609.6 (24.00)	122.2 (4.81)	120.7 (4.75)	40.4 (1.59)	46.0 (1.81)
1225	1275	GK-24-300	3	609.6 (24.00)	122.2 (4.81)	120.7 (4.75)	42.2 (1.66)	52.3 (2.06)
<b>36-inch</b>								
1244	1294	GK-36-300	2-1/2	914.4 (36.00)	122.2 (4.81)	120.7 (4.75)	40.4 (1.59)	46.0 (1.81)
1245	1295	GK-36-300	3	914.4 (36.00)	122.2 (4.81)	120.7 (4.75)	42.2 (1.66)	52.3 (2.06)
1246	1296	GK-36-400	3-1/2	914.4 (36.00)	160.3 (6.31)	157.2 (6.19)	48.5 (1.91)	60.5 (2.38)
1247	1297	GK-36-400	4	914.4 (36.00)	160.3 (6.31)	157.2 (6.19)	48.5 (1.91)	67.6 (2.66)
<b>48-inch</b>								
1812	—	GK-48-300	3	1219.2 (48.00)	122.2 (4.81)	120.7 (4.75)	42.2 (1.66)	52.3 (2.06)
1813	—	GK-48-400	3-1/2	1219.2 (48.00)	160.3 (6.31)	157.2 (6.19)	48.5 (1.91)	60.5 (2.38)
1814	—	GK-48-400	4	1219.2 (48.00)	160.3 (6.31)	157.2 (6.19)	48.5 (1.91)	67.6 (2.66)
1815	—	GK-48-500	5	1219.2 (48.00)	185.7 (7.31)	182.6 (7.19)	46.7 (1.84)	82.6 (3.25)
1816	—	GK-48-600	6	1219.2 (48.00)	211.1 (8.31)	208.0 (8.19)	51.6 (2.03)	102.4 (4.03)