

BALDOR® • *RELIANCE*

Product Information Packet

AOM3708T

5 AIR OVERHP, 1150RPM, 3PH, 60HZ, 215T, 3732M

Part Detail							
Revision:	C	Status:	PRD/A	Change #:		Proprietary:	No
Type:	AC	Elec. Spec:	37WGS070	CD Diagram:	CD0005	Mfg Plant:	
Mech. Spec:	37F359	Layout:	37LYF359	Poles:	06	Created Date:	11-30-2010
Base:	RG	Eff. Date:	08-05-2016	Leads:	9#14 36" LG		Y

Specs			
Catalog Number:	AOM3708T	Heater Indicator:	No Heater
Enclosure:	TEAO	Insulation Class:	F
Frame:	215T	Inverter Code:	Not Inverter
Frame Material:	Steel	KVA Code:	J
Output @ Frequency:	5.000 HP @ 60 HZ	Lifting Lugs:	Standard Lifting Lugs
Synchronous Speed @ Frequency:	1200 RPM @ 60 HZ	Locked Bearing Indicator:	Locked Bearing
Voltage @ Frequency:	208.0 V @ 60 HZ	Motor Lead Quantity/Wire Size:	9 @ 14 AWG
	230.0 V @ 60 HZ	Motor Lead Exit:	Ko Box
	460.0 V @ 60 HZ	Motor Lead Termination:	Flying Leads
XP Class and Group:	None	Motor Type:	3732M
XP Division:	Not Applicable	Mounting Arrangement:	F1
Agency Approvals:	UR	Power Factor:	71
	CSA	Product Family:	General Purpose
Auxillary Box:	No Auxillary Box	Pulley End Bearing Type:	Ball
Auxillary Box Lead Termination:	None	Pulley Face Code:	Standard
Base Indicator:	Rigid	Pulley Shaft Indicator:	Standard
Bearing Grease Type:	Polyrex EM (-20F +300F)	Rodent Screen:	None
Blower:	None	Shaft Extension Location:	Pulley End

Product Information Packet: AOM3708T - 5 AIR OVERHP,1150RPM,3PH,60HZ,215T,3732M

Current @ Voltage:	15.200 A @ 230.0 V	Shaft Ground Indicator:	No Shaft Grounding
	16.500 A @ 208.0 V	Shaft Rotation:	Reversible
	7.600 A @ 460.0 V	Shaft Slinger Indicator:	No Slinger
Design Code:	B	Speed Code:	Single Speed
Drip Cover:	No Drip Cover	Motor Standards:	NEMA
Duty Rating:	CONT	Starting Method:	Direct on line
Electrically Isolated Bearing:	Not Electrically Isolated	Thermal Device - Bearing:	None
Feedback Device:	NO FEEDBACK	Thermal Device - Winding:	None
Front Face Code:	Standard	Vibration Sensor Indicator:	No Vibration Sensor
Front Shaft Indicator:	None	Winding Thermal 1:	None
		Winding Thermal 2:	None

Nameplate NP1256L										
CAT.NO.	AOM3708T									
SPEC.	37F359S070G1									
HP	5 AIR OVER									
VOLTS	208-230/460									
AMP	16.5-15.2/7.6									
RPM	1150									
FRAME	215T				HZ	60			PH	3
SER.F.	1.00		CODE	J	DES	B		CLASS	F	
NEMA-NOM-EFF	86.5		PF	71						
RATING	40C AMB-CONT									
CC									USABLE AT 208V	
DE	6307				ODE	6206				
ENCL	TEAO		SN							
	1275 FPM AT 170CFM									

AC Induction Motor Performance Data

Record # 37121 - Typical performance - not guaranteed values

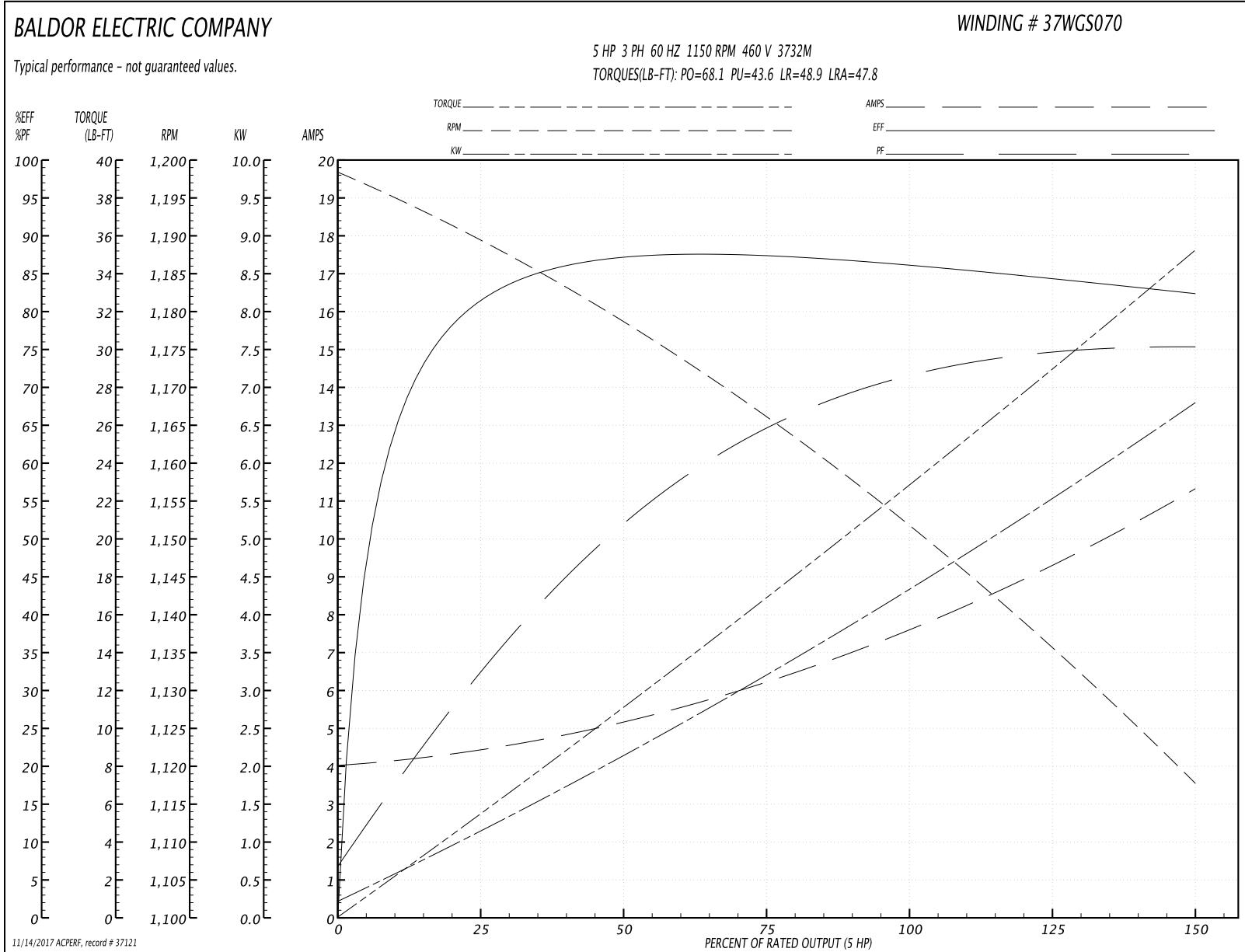
Winding: 37WGS070-R007	Type: 3732M	Enclosure: TEAO
-------------------------------	--------------------	------------------------

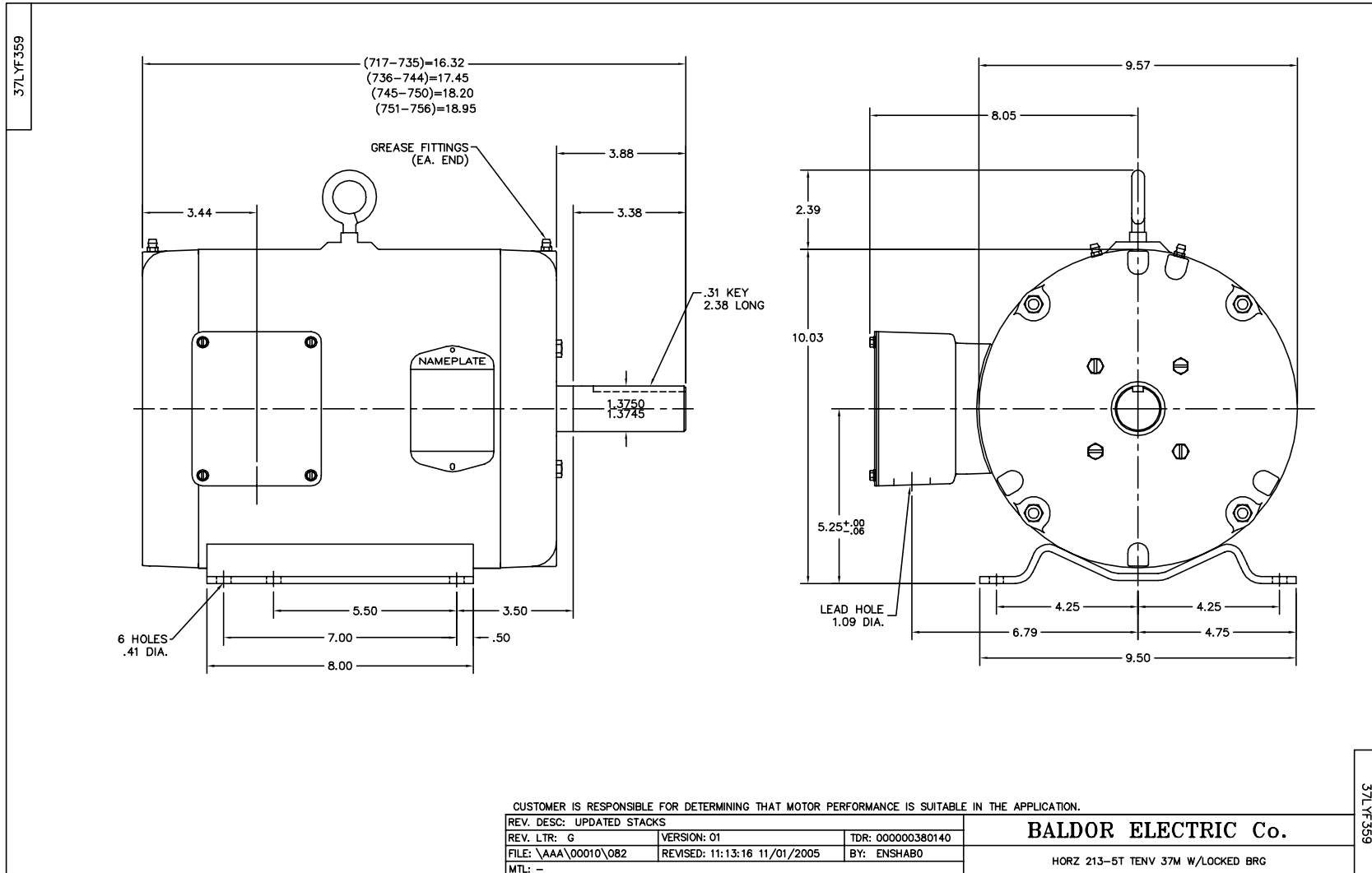
Nameplate Data				460 V, 60 Hz: High Voltage Connection	
Rated Output (HP)	5 AIR OVER			Full Load Torque	22.6 LB-FT
Volts	208-230/460			Start Configuration	direct on line
Full Load Amps	16.5-15.2/7.6			Breakdown Torque	68.1 LB-FT
R.P.M.	1150			Pull-up Torque	43.6 LB-FT
Hz	60	Phase	3	Locked-rotor Torque	48.9 LB-FT
NEMA Design Code	B	KVA Code	J	Starting Current	47.8 A
Service Factor (S.F.)	1			No-load Current	4.09 A
NEMA Nom. Eff.	86.5	Power Factor	71	Line-line Res. @ 25°C	2.03 Ω
Rating - Duty	40C AMB-CONT			Temp. Rise @ Rated Load	79°C
				Locked-rotor Power Factor	24
				Rotor inertia	0.796 LB-FT ²

Load Characteristics 460 V, 60 Hz, 5 HP

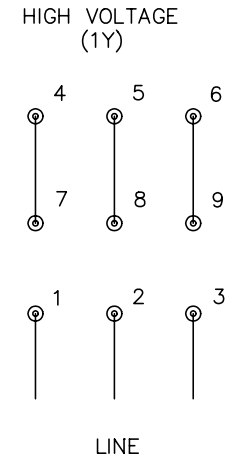
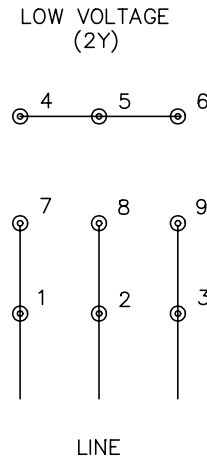
% of Rated Load	25	50	75	100	125	150
Power Factor	33	53	64	71	74	76
Efficiency	79.7	86.7	87.3	86.7	84.6	82.2
Speed	1189	1178	1166	1153	1136	1117
Line amperes	4.33	5.15	6.24	7.6	9.36	11.3

Performance Graph at 460V, 60Hz, 5.0HP Typical performance - Not guaranteed values





CD0005



NOTES:

1. INTERCHANGE ANY TWO LINE LEADS TO REVERSE ROTATION.
2. OPTIONAL THERMOSTATS ARE PROVIDED WHEN SPECIFIED.
3. ACTUAL NUMBER OF INTERNAL PARALLEL CIRCUITS MAY BE A MULTIPLE OF THOSE SHOWN ABOVE.
4. LEAD COLORS ARE OPTIONAL. LEADS MUST ALWAYS BE NUMBERED AS SHOWN.

REV. DESC: REVISE TO SHOW OPTIONAL COLORS			
REV. LTR: E	BY: JLP	REVISED: 01/19/99 10:15	TDR: 0171435
9000D		FILE: AAA00005140	MDL: -
		MTL: -	

BALDOR ELECTRIC Co.

3PH, DV, 9 LEADS

CD0005