

15kV	Power Cable Joints	15PCJ2
------	--------------------	--------



## Features:

- **Molded conductive shield provides a virtually indestructible ground shield for true deadfront construction**
- **Fully shielded, fully submersible molded rubber housing**
- **Molded conductive insert precludes subjecting entrapped air to electrical stress**
- **Grounding eye provides a convenient point to connect a ground wire to the molded conductive shield, placing the molded shield at ground potential**
- **Cable entrance engages the insulation shielding of the cable eliminating the need for taping**

## 15PCJ2 Power Cable Joints

### Applications:

Elastimold® 15PCJ2 Power Cable Joints provide a permanent, fully shielded, fully submersible, straight, transition splice. Typically, the 15PCJ2 can be used on new installations to join two different size cable runs or for repairs to broken cables on existing installations. The 15PCJ2 is for 15kV use rated per IEEE Standard 404. Installed either directly buried or in a vault, the pin and socket interlock of the 15PCJ2 power cable joint will withstand pulls of up to 500 lbs.

The 15PCJ2 is designed to accept cable insulation diameters of .640" to 2.120". The cable entrance of the housing provides electrical and water seal integrity. While designed for use on UD cable having concentric neutral and extruded insulation shielding, the 15PCJ2 will operating equally well on fabric tape shielded or lead-jacketed cables when used with the proper Elastimold® cable shield adapter or grounding device.

### Ratings:

Meets IEEE Standard 404, Latest Revision

#### For 15kV Voltage Class:

110kV BIL – Impulse Withstand (1.2 x 50 microsecond wave)  
 35kV AC – Withstand  
 70kV DC – Withstand during Manufacture Test  
 56kV DC – During installation  
 13kV AC – Corona Extinction @ 3pC sensitivity

Continuous current rating equal to that of cable rating.

Short-time current rating equal to that of cable rating up to 35kA.

Shield design meets IEEE Standard 592, Latest Revision

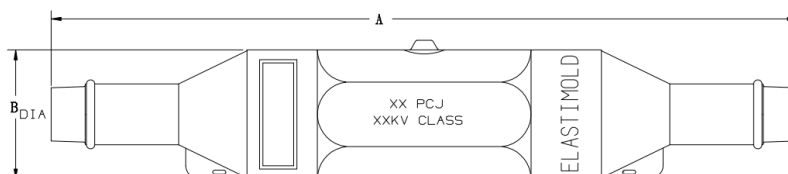
#### Cyclic Aging:

30 days at 26.1kV AC continuous, load current for 8 hours per day, providing 130°F conductor temperature.

Connectors meet ANSI C119.4 Class A and Class 3 ratings.

15kV	Power Cable Joints	15PCJ2
------	--------------------	--------

Dimensional Data		
Style 1 Part Number	A inches	B inches
15PCJ2FX	16.38"	2.78"
15PCJ2GX	16.38"	2.78"
15PCJ2HX	16.38"	2.78"
15PCJ2JX	16.38"	2.78"
15PCJ2KX	21.00"	3.75"
15PCJ2LX	21.00"	3.75"
15PCJ2LMX	21.00"	3.75"
15PCJ2MX	21.00"	3.75"
15PCJ2NX	21.00"	3.75"
15PCJ2PX	21.00"	3.75"
15PCJ2QX	21.00"	3.75"



## CATALOG NUMBER SELECTION

### Step 1 (W)

Determine the insulation diameter of both cables.  
Select the insulation letter code that best straddles the insulation diameter from W table below. Insert code into catalog number.

### Step 2

Insert conductor material code.

### Step 3 (X)

Choose the proper compression lug code according to the conductor size from table 2. Insert code into catalog number.  
And repeat for the second cable.

### Example:

The ordering number for a power cable joint of style 1 with an insulation diameter of .995" to 1.090" with a #4 stranded aluminum conductor and the other cable has an insulation diameter of .800" and #6 stranded aluminum, the catalog number would be 15PCJ2J1200-G1180. To include sealing and grounding kit add 200/600ECS-30PCJ for concentric neutral cables and 200/600ECSG3-30PCJ for copper tape shield cables.

#### Material Code

Alum.	1
CU	2

15PCJ2

W Code	XXX Code	W Code	XXX Code

Symbol for W	Cable Insulation Diameter in Inches	
	MIN.	MAX.
F	0.640	0.820
G	0.760	0.950
H	0.850	1.050
J	0.980	1.180
K	1.090	1.310
L	1.180	1.465
LM	1.280	1.430
M	1.370	1.630
N	1.515	1.780
P	1.725	1.935
Q	1.900	2.120

XXX Code	Conductor Size AWG or kcmil	
	Strand./ Compr.	Solid/ Comp.
180	#6	#5
190	#5	#4
200	#4	#3
210	#3	#2
220	#2	#1
230	#1	1/0
240	1/0	2/0
250	2/0	3/0
260	3/0	4/0
270	4/0	250
280	250	300
290	300	350
300	350	400
310	400	450/500
320	450	550
330	500	600
340	550	650
350	600	700
360	650	750
380	700/750	800/900
390	800	-
400	900	1000
410	1000	-
420	-	1250
440	1250	-

#### Each kit contains the following:

1	Power Cable Joint Housing	15PCJ2-W
1	Connector	05903XXX
1	Tube, lubricant	82-08
1	Installation instruction	IS-0172 or IS-0189 or CC-0029 or CC-0039
1	Crimp Chart	