

BALDOR® • **RELIANCE**

Product Information Packet

CL5027T

2HP, 1725RPM, 1PH, 60HZ, 182TC, X3634L, XPFC

Part Detail							
Revision:	Y	Status:	PRD/A	Change #:		Proprietary:	No
Type:	AC	Elec. Spec:	36WG0203	CD Diagram:	CD0001	Mfg Plant:	
Mech. Spec:	36N017	Layout:	36LYN017	Poles:	04	Created Date:	
Base:	RG	Eff. Date:	09-10-2015	Leads:	4#14 A PH,2#16 B PH		

Specs			
Catalog Number:	CL5027T	Inverter Code:	Not Inverter
Enclosure:	XPFC	KVA Code:	H
Frame:	182TC	Lifting Lugs:	No Lifting Lugs
Frame Material:	Steel	Locked Bearing Indicator:	Locked Bearing
Output @ Frequency:	2.000 HP @ 60 HZ	Motor Lead Quantity/Wire Size:	4 @ 14 AWG, A PH
Synchronous Speed @ Frequency:	1800 RPM @ 60 HZ	Motor Lead Exit:	Ko Box
Voltage @ Frequency:	115.0 V @ 60 HZ	Motor Lead Termination:	Flying Leads
	230.0 V @ 60 HZ	Motor Type:	3634L
XP Class and Group:	CLI GP D	Mounting Arrangement:	F1
XP Division:	Division I	Power Factor:	81
Agency Approvals:	UL	Product Family:	General Purpose
	CSA	Pulley End Bearing Type:	Ball
Auxillary Box:	No Auxillary Box	Pulley Face Code:	C-Face
Auxillary Box Lead Termination:	None	Pulley Shaft Indicator:	Standard
Base Indicator:	Rigid	Rodent Screen:	None
Bearing Grease Type:	Polyrex EM (-20F +300F)	Shaft Extension Location:	Pulley End
Blower:	None	Shaft Ground Indicator:	No Shaft Grounding
Current @ Voltage:	11.000 A @ 230.0 V	Shaft Rotation:	Reversible

	22.000 A @ 115.0 V	Shaft Slinger Indicator:	No Slinger
Design Code:	L	Speed Code:	Single Speed
Drip Cover:	No Drip Cover	Motor Standards:	NEMA
Duty Rating:	CONT	Starting Method:	Direct on line
Electrically Isolated Bearing:	Not Electrically Isolated	Thermal Device - Bearing:	None
Feedback Device:	NO FEEDBACK	Thermal Device - Winding:	Normally Closed Thermostat
Front Face Code:	Standard	Vibration Sensor Indicator:	No Vibration Sensor
Front Shaft Indicator:	None	Winding Thermal 1:	None
Heater Indicator:	No Heater	Winding Thermal 2:	None
Insulation Class:	B	XP Temp Code:	T2C

Nameplate NP0015XPSL	
NO.	<input type="text"/>
SER.	<input type="text"/>
SPEC.	36N17-203G1
CAT.NO.	CL5027T
HP	2
VOLTS	115/230
AMPS	22/11
RPM	1725
HZ	60
SER.F.	1.00
RATING	40C AMB-CONT
FRAME	182TC
USABLE AT 208V	<input type="text"/>
BLANK	<input type="text"/>

CC	<input type="text"/>
T. CODE	T2C
PH	1
CL	B
DES	L
CODE	H
NEMA-NOM-EFF	75
PF	81

AC Induction Motor Performance Data

Record # 20850 - Typical performance - not guaranteed values

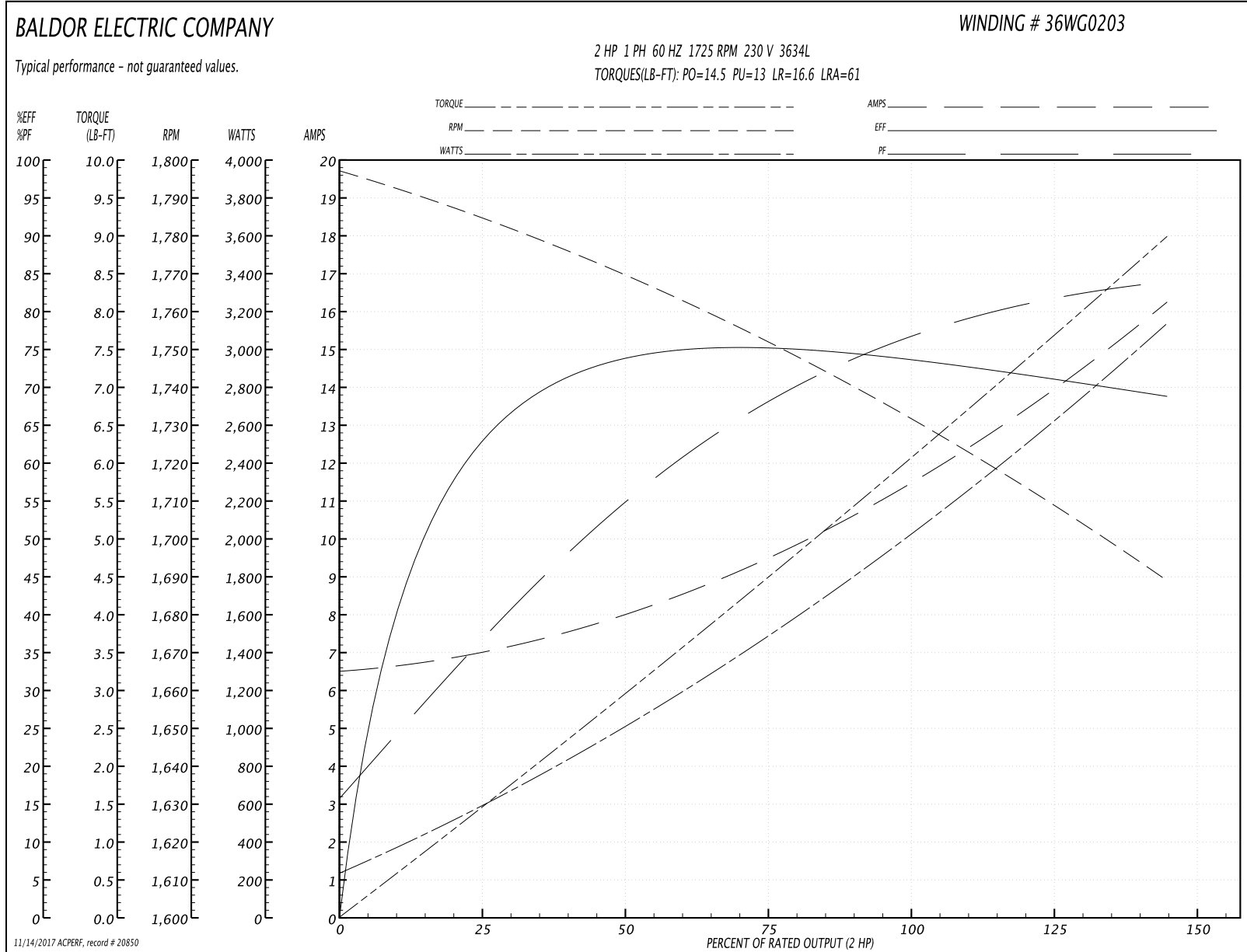
Winding: 36WG0203-R002	Type: 3634L	Enclosure: XPFC
-------------------------------	--------------------	------------------------

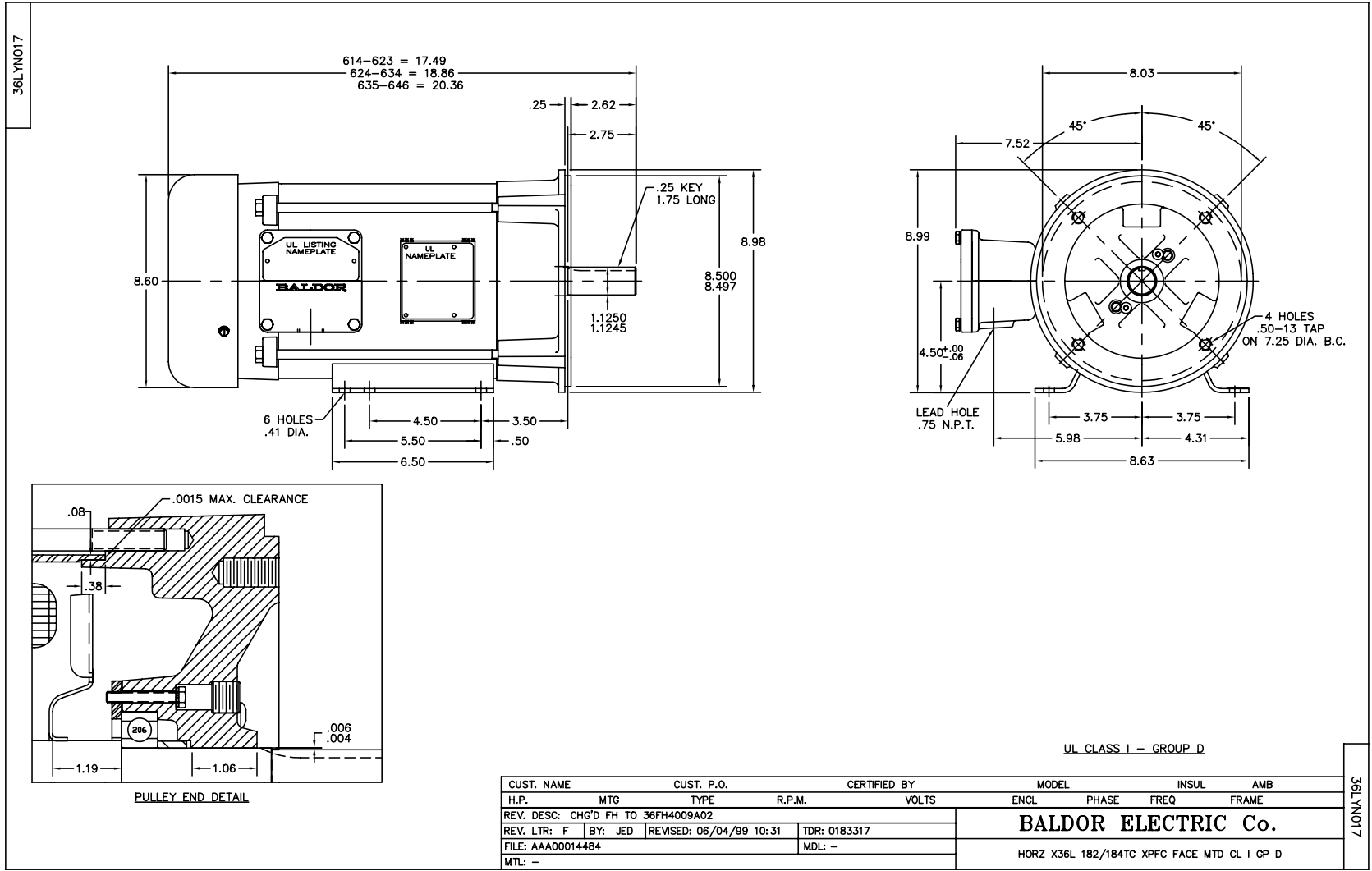
Nameplate Data				230 V, 60 Hz: High Voltage Connection	
Rated Output (HP)	2			Full Load Torque	6 LB-FT
Volts	115/230			Start Configuration	direct on line
Full Load Amps	22/11			Breakdown Torque	14.5 LB-FT
R.P.M.	1725			Pull-up Torque	13 LB-FT
Hz	60	Phase	1	Locked-rotor Torque	16.6 LB-FT
NEMA Design Code	L	KVA Code	H	Starting Current	61 A
Service Factor (S.F.)	1			No-load Current	6.5 A
NEMA Nom. Eff.	75	Power Factor	81	Line-line Res. @ 25°C	0.244 Ω A Ph 0.632 Ω B Ph
Rating - Duty	40C AMB-CONT			Temp. Rise @ Rated Load	78°C

Load Characteristics 230 V, 60 Hz, 2 HP

% of Rated Load	25	50	75	100	125	150	S.F.
Power Factor	40	58	69	76	80	81	78
Efficiency	63.1	72.3	74.3	75	72	68.3	73.2
Speed	1783	1769	1753	1733	1711	1689	1720
Line amperes	7	8.05	9.7	11	13.9	16.2	12.74

Performance Graph at 230V, 60Hz, 2.0HP Typical performance - Not guaranteed values





CD0001



CD0001

REV. DESC: REVISE TO SHOW OPTIONAL COLORS			
REV. LTR: D	BY: JLP	REVISED: 04/08/99 1:16	TDR: 0178636
100000		FILE: AAA00007405	MDL: -
		MTL: -	

BALDOR ELECTRIC Co.

TYPE L, DV, REV, 6 LEADS