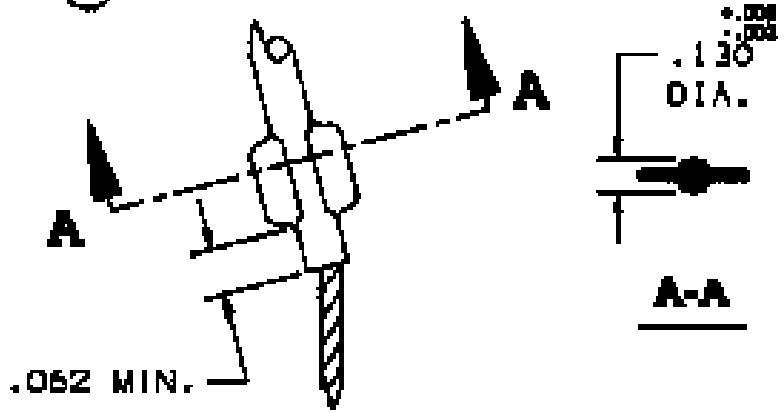


COMPONENT LIST

ITEM NO.	DESCRIPTION	NAT'L	COMPONENT NO.	QTY.
1	STRND	T BRZ	302-01-002	-
2	EQUALIZER	BRZ	302-47-001	2
3	ROD	95T	304-53-020	1
4	EYE	SET	304-45-007	1
5	TAG	MYLAR		1

22.5



CRIMP DETAIL
2 PL.

IN ACCEPTING OUR DRAWINGS OR BLUEPRINTS FOR QUOTATION OR OTHER PURPOSES, YOU AGREE NOT TO DISCLOSE TO OTHERS THE IDEAS, INFORMATION, OR DESIGNS THEREIN SHOWN, AND THAT YOU WILL MAKE NO USE OF OUR DRAWINGS OR BLUEPRINTS OR OF THE IDEAS, INFORMATION, OR DESIGNS THEREIN SHOWN WITHOUT OUR PERMISSION.

TITLE GRIP, FIBER OPTIC SUPPORT, SPLIT ROD CLOSING, SINGLE WEAVE, SINGLE "U" EYE; DIA. RA. .48-.58 APPROX BRK STR. 400# ±20%

TOLERANCES UNLESS OTHERWISE SPECIFIED .01 = ±.01 .02 = ±.02 .005 = ±.015 ANGLE TOL. ± 2°	HUBBELL INCORPORATED KILLING DIVISION STORINGTON, CT	
	DR. BY DF	APP. BY JW
PROJECT NO.	TR. BY PCM	SCALE N/A
	CHK. BY	DATE 5/28/66

DR. NO. 022-29-1020	REV. E
----------------------------	---------------