

Rittal – The System.

Faster – better – everywhere.

Tilting adapter 10° for support arm connection Ø 130 mm – CP 6206.400

Date : May 24, 2018

ENCLOSURES

POWER DISTRIBUTION

CLIMATE CONTROL

IT INFRASTRUCTURE

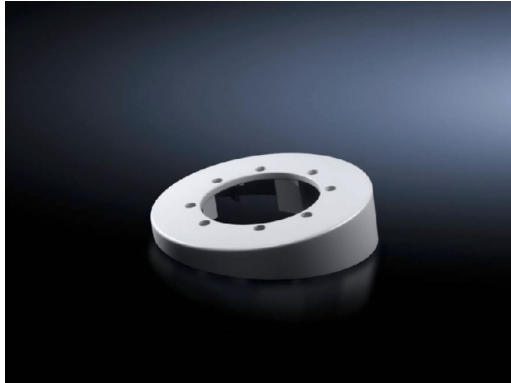
SOFTWARE & SERVICES

FRIEDHELM LOH GROUP



Tilting adapter 10° for support arm connection Ø 130 mm – CP 6206.400

created: 24.05.2018 build on www.rittal.com/us-en



Product description

Version: For mounting between the command panel and Coupling CP 60/120/180 for support arm connection Ø 130 mm, 6206.300, 6212.300, 6218.300 Attachment CP 60/120 for support arm connection Ø 130 mm, 6206.320, 6212.320 Angle coupling 90° CP 60/120 for support arm connection Ø 130 mm, CP 6206.380, 6212.380

Description: Mounted between coupling, system 60/120 or attachment, system 60/120 or angle coupling, system 60/120, and the command panel.

Material: Die-cast zinc

Color: RAL 7035

Supply includes: Seals
Fasteners

Product features

rigid: yes

Packaging unit: 1 pc(s).

Weight/packaging unit: 0.6 kg (1.3 lb.)

EAN: 4028177684423

Customs tariff number: 79070000

ETIM 6.0:	EC000882
ETIM 5.0:	EC002620
eCI@ss 8.0/8.1:	27400556
eCI@ss 7.0/7.1:	27189261
eCI@ss 6.0/6.1:	27189261
eCI@ss 5.1/5.1.4:	27189247
Product description (long):	CP Tilting adaptor 10°, CP 60/120, for support arm connection Ø 130 mm
Approvals	
Declarations:	Manufacturer's declaration