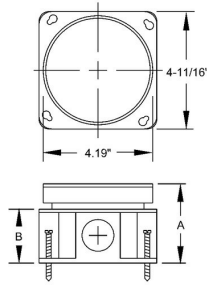




ROUND FLOOR BOX - CONCRETE POUR

Fully Adjustable Floor Box, Cast Iron
N/A

A97



Catalog #: 6263

APPLICATIONS

Round floor boxes provide flush service for power or voice/data
Floor boxes may be used for carpet or tile floor applications

PRODUCT FEATURES

Cast iron, water-tight body, fully adjustable
Gray powder coat paint inside and out for additional corrosion resistance
3/4" threaded conduit openings are standard
N/A

UL LISTED

File E195978

GENERAL PRODUCT INFORMATION

Wiring System: Conduit

CONFIGURATION

Number Of Outlets: 4
Side Knockout(s): ---

PRODUCT MEASUREMENTS

Outlet Size: 3/4 in.
Cubic Inches (cm3): 30.0 (491.5)
Wt. Ea. (Lbs.): 3.670
Product Length (in.): 4.84
Product Width (in.): 2.88
Product Height (in.): 4.84

PACKAGING

Minimum Pack Qty.: 4
Std. Pkg.: 4
Product UPC-A Labeled: Yes
Weight (Lbs. Per/C): 367.00
Ship Carton Length (in.): 12.37
Ship Carton Width (in.): 6.12
Ship Carton Height (in.): 9.00
Ctn Weight (Lbs.): 14.68
Pallet Qty: 420
UPC Number: 050169062630
I2of5: 50050169062635