

Rittal – The System.

Faster – better – everywhere.

► Adaptor support arm connection Ø 130 mm to 120 x 65 mm – CP 6212.500

Date : May 29, 2018

ENCLOSURES

POWER DISTRIBUTION

CLIMATE CONTROL

IT INFRASTRUCTURE

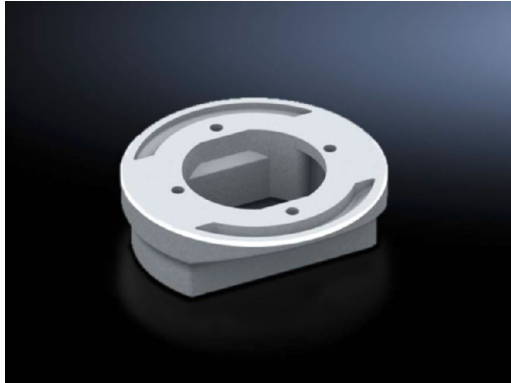
SOFTWARE & SERVICES

FRIEDHELM LOH GROUP



Adaptor support arm connection Ø 130 mm to 120 x 65 mm – CP 6212.500

created: 29.05.2018 build on www.rittal.com/us-en



Product description

Version: For external mounting of command panel with support arm cut-out 120 x 65 mm and connection console VESA 75/100 to:
Coupling CP 120, 6212.300
Attachment CP 120, 6212.320
Angle coupling 90°, CP 120, 6212.380
Pivot with jib (6206.850)
Pivot for machine-integrated installation (6206.870)

Material: Cast aluminum

Color: RAL 7035

Supply includes: Seals
Fasteners

Product features

Dimensions: Height: 40 mm (1.6 ")

rigid: yes

Packaging unit: 1 pc(s).

Weight/packaging unit: 0.5 kg (1.1 lb.)

EAN: 4028177684218

Customs tariff number:	76169990
ETIM 6.0:	EC000882
ETIM 5.0:	EC000882
eCl@ss 8.0/8.1:	27400556
eCl@ss 7.0/7.1:	27189261
eCl@ss 6.0/6.1:	27189261
eCl@ss 5.1/5.1.4:	27189247
Product description (long):	CP Adaptor CP 120/60, from support arm connection Ø 130 mm to 120 x 65 mm
Approvals	
Declarations:	Manufacturer's declaration