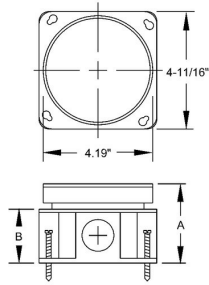




ROUND FLOOR BOX - CONCRETE POUR

Fully Adjustable Floor Box, Stamped Steel
N/A

A97



Catalog #: 6257

APPLICATIONS

Round floor boxes provide flush service for power or voice/data
Floor boxes may be used for carpet or tile floor applications

PRODUCT FEATURES

Stamped steel, concrete tight, fully adjustable
Zinc coated finish
1/2", 3/4", 1", and 1-1/4" knockouts; all bottom knockouts are accessible
N/A

GENERAL PRODUCT INFORMATION

Wiring System: Conduit

CONFIGURATION

Side Knockout(s): (6) 1/2, (4) 3/4 in.
Bottom Knockouts(s): (3) 1/2 in.

PRODUCT MEASUREMENTS

Cubic Inches (cm3): 37.3 (611.2)
Wt. Ea. (Lbs.): 2.350
Product Length (in.): 6.00
Product Width (in.): 2.91
Product Height (in.): 4.81

PACKAGING

Minimum Pack Qty.: 4
Std. Pkg.: 4
Product UPC-A Labeled: Yes
Weight (Lbs. Per/C): 235.00
Ship Carton Length (in.): 12.50
Ship Carton Width (in.): 5.25
Ship Carton Height (in.): 12.50
Ctn Weight (Lbs.): 9.16
Pallet Qty: 384
UPC Number: 050169062579
I2of5: 50050169062574