

Rittal – The System.

Faster – better – everywhere.

► **Wall-mounted enclosures EL, 3-part pre-configured with mounting angles, depth-variable – DK 7709.735**

Date : May 25, 2018

ENCLOSURES

POWER DISTRIBUTION

CLIMATE CONTROL

IT INFRASTRUCTURE

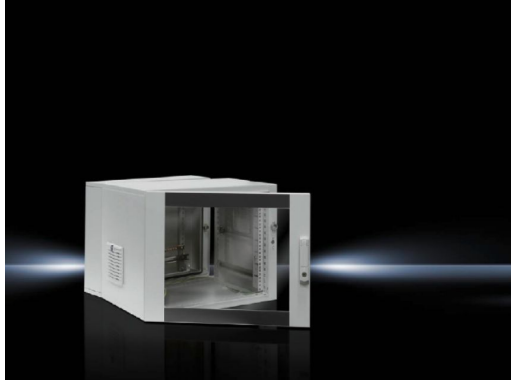
SOFTWARE & SERVICES

FRIEDHELM LOH GROUP



Wall-mounted enclosures EL, 3-part pre-configured with mounting angles, depth-variable – DK 7709.735

created: 25.05.2018 build on www.rittal.com/us-en



Product description

Version:	Pre-configured
Description:	Wall-mounted enclosure with hinged door provides optimum accessibility.
Material:	Wall and hinged part: Carbon steel, 1.5 mm Viewing window: Single-pane safety glass, 3 mm
Surface finish:	Powder-coated
Color:	Wall and hinged part: RAL 7035 Viewing door: RAL 7035/7015 (slate gray)
Protection category IP to IEC 60 529:	IP 54 in conjunction with solid gland plate, top and bottom
Supply includes:	Wall section closed at top and bottom with flange plate, two vertical mounting rails and horizontal C-profile rails for cable clamping Hinged part with 25 mm pitch pattern in the front and rear frame, two 482.6 mm (19") profile angles at the front, fully depth adjustable and side outlet filters on left and right Ground rail with star grounding Designer viewing door 1 enclosure key double bit no. 5 Wall mounting brackets, 10 mm Mini-comfort handle Security lock 3524 E
Base material:	Carbon steel

Product features

Dimensions:	Height: 478 mm (19 ") Height units: 9 U (9 U) Width: 600 mm (24 ") Depth: 573 mm (23 ")
Depth hinged part:	416 mm (16 ")
Installation depth:	520 mm (20 ")
Clearances:	Clearance height: 415 mm (16 ") Clearance width: 502 mm (20 ")
Wall section:	Depth: 135 mm (5.3 ")
Load capacity:	Hinged part, static (max.): 450 N (450 N)
Packaging unit:	1 pc(s).
Weight/packaging unit:	35 kg (77.2 lb.)
EAN:	4028177324237
Customs tariff number:	94032080
ETIM 6.0:	EC000261
ETIM 5.0:	EC002500
eCl@ss 8.0/8.1:	27142408
eCl@ss 7.0/7.1:	27180208
eCl@ss 6.0/6.1:	27180208
eCl@ss 5.1/5.1.4:	27180204
Product description (long):	DK Wall-mounted enclosures, 3-part, WHD: 600x478x573 mm, 9 U, Pre-configured, with mounting angles, depth-variable
Approvals	
Approvals:	UL + C-UL
Certificates:	Protection category
Declarations:	Declaration of conformity