

THIS COPY IS PROVIDED ON A RESTRICTED BASIS AND IS NOT TO BE USED IN ANY WAY DETRIMENTAL TO THE INTERESTS OF PANDUIT CORP.

NOTES, UNLESS OTHERWISE SPECIFIED:

PART MUST BE RoHS COMPLIANT.

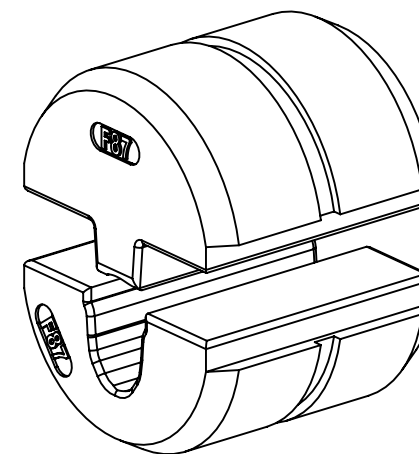
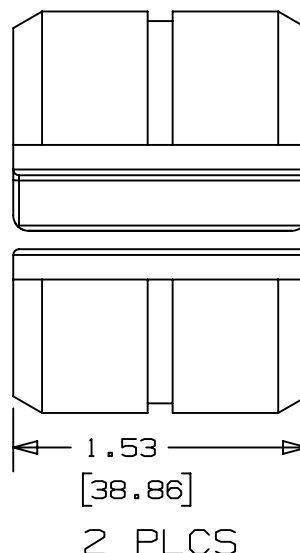
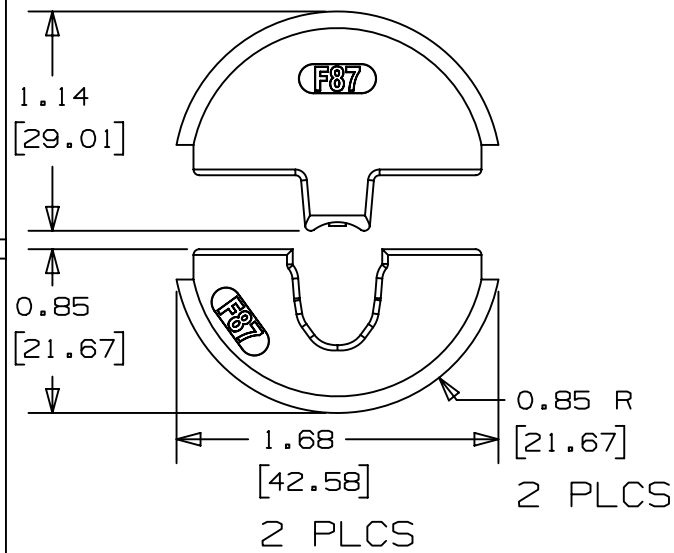


SINGLE CRIMP  
(FIRST CRIMP)



DOUBLE CRIMP  
(SECOND CRIMP)

1. DIMENSIONS IN BRACKETS ARE IN METRIC.
2. RECOMMENDED TOOL: CT-3001/ST
3. COMPATIBLE TOOLS: CT-2931/ST, CT-920CH, CT-930LPCH
4. WIRE SIZE: 1 AWG, 1/0
5. CRIMPS: F87 FERRULES - ALL SIZES
6. DIE HALVES ARE HEAT TREATED TO Rc 32-35
7. DIE HALVES ARE NICKLON PLATED FOR LUBRICITY/DURABILITY
8. DIE HALVES AND PLATING ARE RoHS COMPLIANT.
9. F87-18 FERRULES CRIMPED ON 1 AWG WIRE MUST BE DOUBLE CRIMPED TO ACHIEVE UL LISTED/CSA CERTIFIED TERMINATIONS.
  - 1ST CRIMP: STANDARD CRIMP, FERRULE FUNNEL AGAINST DIE SET, CABLE INSULATION AGAINST FUNNEL.
  - 2ND CRIMP: REMOVE CRIMPED FERRULE, ROTATE 180° AND RE-INSERT. RECRIMP FERRULE.



INSTALLATION INSTRUCTION NUMBER		PA28870A01		N/A	
TITLE					
CD-920-F87 CUSTOMER DRAWING					
CUSTOMER DRAWING					
ITEM REVISION NAME				R28874AA/01	
DATASET FILE NAME				R28874AA-00-dwg1	
UNLESS OTHERWISE SPECIFIED, DIMENSIONAL TOLERANCES ARE: IN [ mm ]				<b>PANDUIT</b>  MATERIAL:  4140 STEEL / RC 32-35  DRAWING NUMBER: TD28874A01	
.x ± .1 [ 2.54 ]      .xxx ± .005 [ .127 ] .xx ± .01 [ .25 ]      ANGLES ± 5 °					
THIRD ANGLE PROJECTION					
DRAWN BY	DATE	CHK	SCALE	SIZE	
BJPU	03/30/17	JADE	1:1	A	

01	08-28-17	BJPU	JEH	JADE	OFFICIAL RELEASE OF CD-920-F87 CUSTOMER DRAWING ADDED NOTE # 9	013588
00	03-30-17	BJPU	JEH	JADE	RELEASED	---
REV	DATE	BY	CHK	APR	DESCRIPTION	ECN