

Switches, Low Voltage

5A, 24VDC

Heavy Duty, Specification Grade

HUBBELL

- Features
- Maintained Contact
 - Thread cleaning captive mounting screw
 - Automatic self-grounding stainless steel staple

Ordering Information

Description	Device Color	UPC Number	Catalog Number
Toggle, back and side wired	Black	783585554778	CSB120BKLV

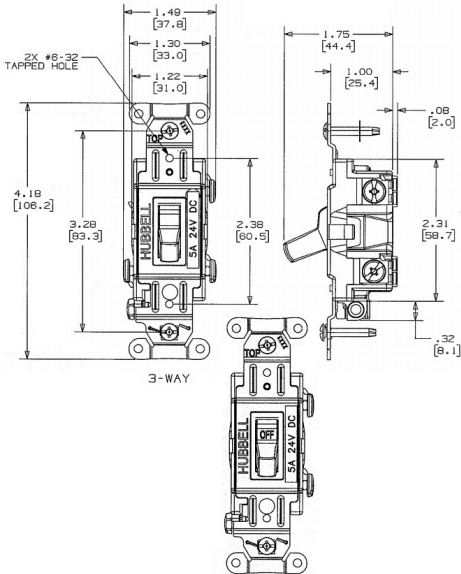


Specifications

Front	Thermoplastic
Base	Thermoplastic
Contacts	Silver Alloy
Terminal Screws	Brass
Mounting Bridge	Steel, Zinc Plated

Performance

Electrical	
Configuration	3-Way
Operating Current	Maximum of 5A @ 24VDC
Mechanical	
Terminal Accomodations	#14 AWG min. - #10 AWG max. solid or stranded copper wire only
Environmental	
Operating Temperature	Max. continuous: 75°C; Min. continuous: -40°C without impact



Complementary Products

Wallplate, Toggle Opening	NP1BK
Wallplate, Toggle Opening, Stainless Steel	SS1

Online Resources

- Customer Use Drawing
- eCatalog
- Installation Instructions

