

Issue Date: 10/29/2012

Page: 1 of 2

File: PSS-K650LBM3

25kV	600A Deadbreak Mountable Insulated Bushing	K650LBM3
------	--	----------



Features:

- 25kV 600A Deadbreak rated Mountable Bushing Interface
- Provision for mounting using bolts on stud
- Allows de-energized connection of 600A elbows and bushing extenders for cam-op connectors
- For use on 15kV/25kV systems

K650LBM3 Mountable Insulated Bushing

Applications:

The Elastimold® K650LBM3 mountable insulated bushing comes with the cam-op connector kit. It has three holes for mounting using three bolts. The K650LBM3 is a standard IEEE 386 bushing interface and accepts all K655LR elbows and K655BE bushing extenders.

Ratings:

Meets ANSI/IEEE Standard 386, Latest Revision

For 25kV Voltage Class:

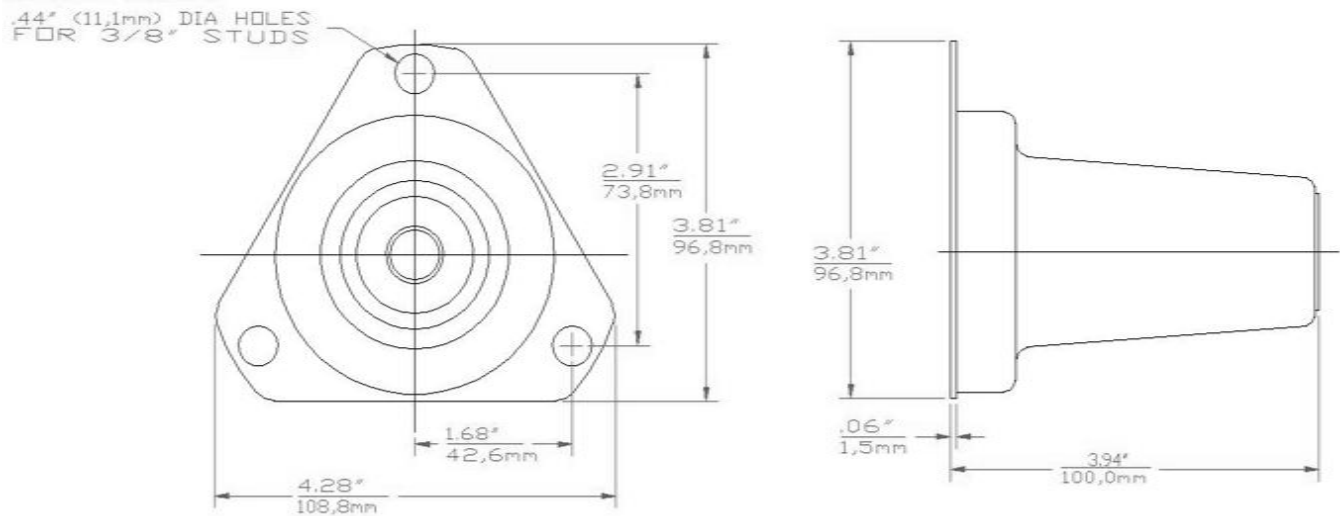
16.2kV Max Phase-to-Ground – Operating Voltage
 28kV Max Phase-to-Phase
 140kV BIL – Impulse Withstand (1.2 x 50 microsecond wave)
 45kV AC – One minute withstand
 84kV DC – 15 minutes withstand
 21.5kV AC – Corona Extinction @ 3pC sensitivity
 900 Amp – Continuous
 25kA Sym – 10 Cycles Momentary & Fault Close

Issue Date: 10/29/2012

Page: 2 of 2

File: PSS-K650LBM3

25kV	600A Deadbreak Mountable Insulated Bushing	K650LBM3
------	---	----------



Ordering Instructions:

To order 25kV 600 Amp mountable insulated bushing specify **K650LBM3**.

Each kit contains the following:

- | | | |
|---|--------------------------|----------|
| 1 | Mountable Ins. Bushing | K650LBM3 |
| 1 | Tube, lubricant | 82-08 |
| 1 | Installation instruction | IS-0153 |