

# Rittal – The System.

Faster – better – everywhere.

## ► Cable entry plates for installation in TS, SE and PC enclosures – TS 8800.120

Date : May 24, 2018

ENCLOSURES

POWER DISTRIBUTION

CLIMATE CONTROL

IT INFRASTRUCTURE

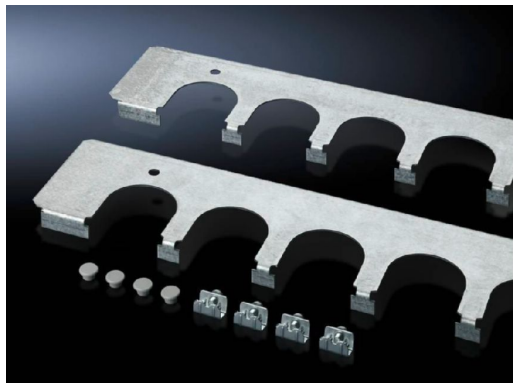
SOFTWARE & SERVICES

FRIEDHELM LOH GROUP



# Cable entry plates for installation in TS, SE and PC enclosures – TS 8800.120

created: 24.05.2018 build on [www.rittal.com/us-en](http://www.rittal.com/us-en)



## Product description

<b>Description:</b>	A safe cable entry in conjunction with cable routing bushes, connector grommets. Fitted instead of the standard base plates.
<b>Benefits:</b>	Particularly well-suited to cables with differing cross-sections Thanks to the enclosure symmetry, the cable entry plates, like the base plates, can also be used in the enclosure depth, on the right and left
<b>Material:</b>	Carbon steel
<b>Surface finish:</b>	Zinc-plated
<b>Supply includes:</b>	Assembly components

## Product features

<b>Version:</b>	Note: For installation in TS and PC enclosures
<b>Suitable for:</b>	Enclosure type: TS Enclosure type: SE Width: 1200 mm (47 ")
<b>Cable entry:</b>	Number of cut-outs: 6 Number x metric diameter: 6
<b>Packaging unit:</b>	4 pc(s).
<b>Weight/packaging</b>	2.18 kg (4.8 lb.)

<b>unit:</b>	
<b>EAN:</b>	4028177212497
<b>Customs tariff number:</b>	73269098
<b>ETIM 6.0:</b>	EC002620
<b>ETIM 5.0:</b>	EC002620
<b>eCl@ss 8.0/8.1:</b>	27189261
<b>eCl@ss 7.0/7.1:</b>	27400604
<b>eCl@ss 6.0/6.1:</b>	27400604
<b>eCl@ss 5.1/5.1.4:</b>	27189222
<b>Product description (long):</b>	TS Cable entry plate, for TS, SE and PC enclosures, for W: 1200 mm
<b>Approvals</b>	
<b>Certificates:</b>	EAC