

# **BALDOR**® • ***RELIANCE***

## **Product Information Packet**

# **CWDM3557**

**1.5HP, 1140RPM, 3PH, 60HZ, 56C, 3529M, TEFC, F1**

Part Detail							
Revision:	N	Status:	INA/A	Change #:		Proprietary:	No
Type:	AC	Elec. Spec:	35WGM899	CD Diagram:	CD0005	Mfg Plant:	
Mech. Spec:	35S587	Layout:	35LYS587	Poles:	06	Created Date:	01-12-2011
Base:	RG	Eff. Date:	03-08-2016	Leads:	9#18		

Specs			
Catalog Number:	CWDM3557	Insulation Class:	F
Enclosure:	TEFC	Inverter Code:	Not Inverter
Frame:	56C	KVA Code:	K
Frame Material:	Steel	Lifting Lugs:	No Lifting Lugs
Output @ Frequency:	1.500 HP @ 60 HZ	Locked Bearing Indicator:	Locked Bearing
Synchronous Speed @ Frequency:	1200 RPM @ 60 HZ	Motor Lead Quantity/Wire Size:	9 @ 18 AWG
Voltage @ Frequency:	460.0 V @ 60 HZ	Motor Lead Exit:	Ko Box
	230.0 V @ 60 HZ	Motor Lead Termination:	Flying Leads
	208.0 V @ 60 HZ	Motor Type:	3529M
XP Division:	Not Applicable	Mounting Arrangement:	F1
Agency Approvals:	CSA	Power Factor:	72
	UR	Product Family:	Wash Down
Auxillary Box:	No Auxillary Box	Pulley End Bearing Type:	Sealed Bearing
Auxillary Box Lead Termination:	None	Pulley Face Code:	C-Face
Base Indicator:	RG	Pulley Shaft Indicator:	Standard
Bearing Grease Type:	Polyrex EM (-20F +300F)	Rodent Screen:	None
Blower:	None	Shaft Extension Location:	Pulley End
Current @ Voltage:	2.450 A @ 460.0 V	Shaft Ground Indicator:	No Shaft Grounding

	4.900 A @ 230.0 V	<b>Shaft Rotation:</b>	Reversible
	5.000 A @ 208.0 V	<b>Shaft Slinger Indicator:</b>	Shaft Slinger
<b>Design Code:</b>	B	<b>Speed Code:</b>	Single Speed
<b>Drip Cover:</b>	No Drip Cover	<b>Motor Standards:</b>	NEMA
<b>Duty Rating:</b>	CONT	<b>Starting Method:</b>	Direct on line
<b>Electrically Isolated Bearing:</b>	Not Electrically Isolated	<b>Thermal Device - Bearing:</b>	None
<b>Feedback Device:</b>	NO FEEDBACK	<b>Thermal Device - Winding:</b>	None
<b>Front Face Code:</b>	Standard	<b>Vibration Sensor Indicator:</b>	No Vibration Sensor
<b>Front Shaft Indicator:</b>	None	<b>Winding Thermal 1:</b>	None
<b>Heater Indicator:</b>	No Heater	<b>Winding Thermal 2:</b>	None

Nameplate NP1496L										
CAT.NO.	CWDM3557									
SPEC.	35S587M899G1									
HP	1.5									
VOLTS	208-230/460									
AMP	5-4.9/2.45									
RPM	1140									
FRAME	56C				HZ	60			PH	3
SER.F.	1.15		CODE	K	DES	B		CLASS	F	
NEMA-NOM-EFF	80		PF	72						
RATING	40C AMB-CONT									
CC									USABLE AT 208V	
DE	6205				ODE	6203				
ENCL	TEFC			SN						

**AC Induction Motor Performance Data**

Record # 33199 - Typical performance - not guaranteed values

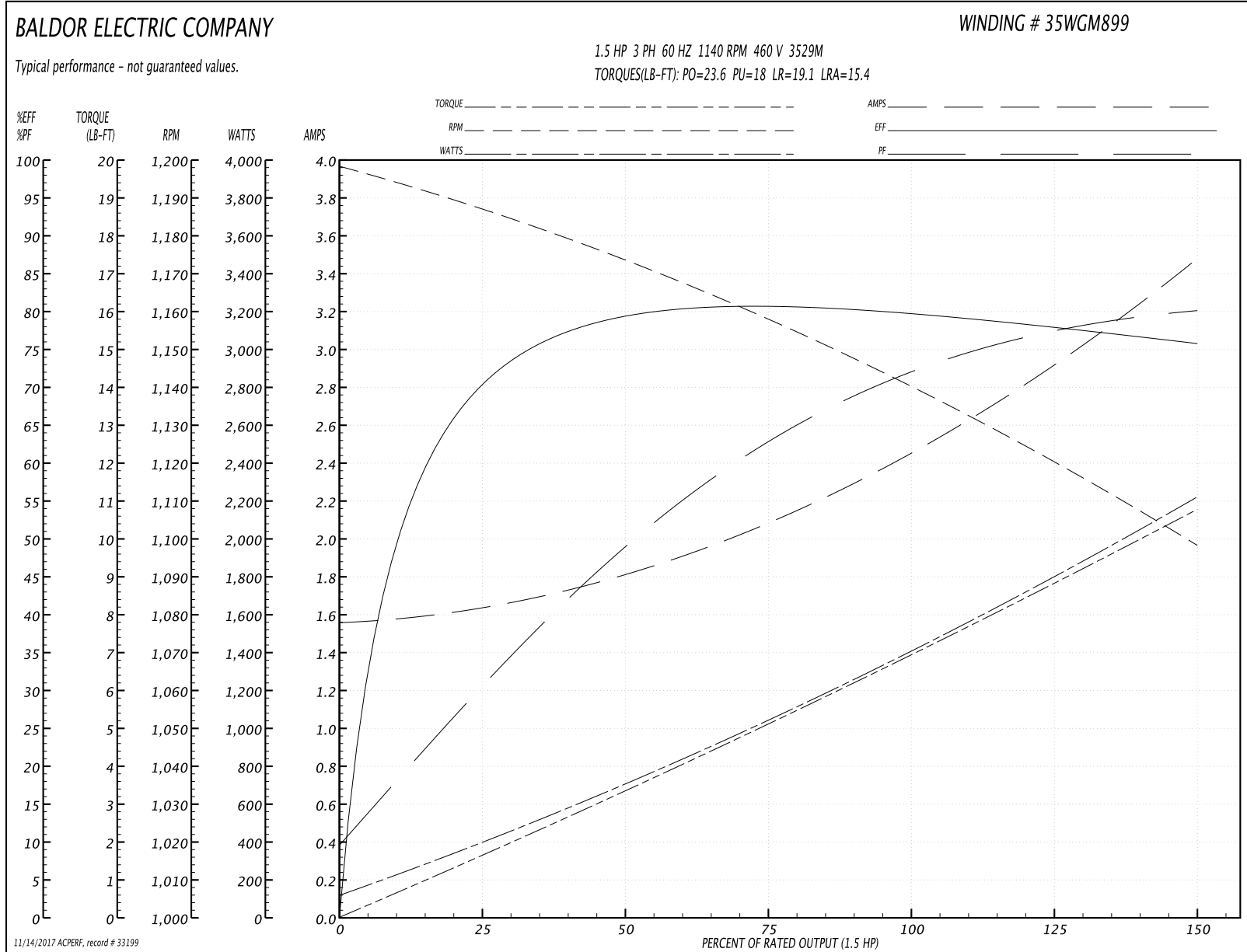
<b>Winding:</b> 35WGM899-R001	<b>Type:</b> 3529M	<b>Enclosure:</b> TEFC
-------------------------------	--------------------	------------------------

Nameplate Data				460 V, 60 Hz: High Voltage Connection	
Rated Output (HP)	1.5			Full Load Torque	6.97 LB-FT
Volts	208-230/460			Start Configuration	direct on line
Full Load Amps	5.1-5/2.5			Breakdown Torque	23.6 LB-FT
R.P.M.	1140			Pull-up Torque	18 LB-FT
Hz	60	Phase	3	Locked-rotor Torque	19.1 LB-FT
NEMA Design Code	B	KVA Code	K	Starting Current	15.4 A
Service Factor (S.F.)	1.15			No-load Current	1.56 A
NEMA Nom. Eff.	80	Power Factor	72	Line-line Res. @ 25°C	11.121 Ω
Rating - Duty	40C AMB-CONT			Temp. Rise @ Rated Load	84°C
S.F. Amps				Temp. Rise @ S.F. Load	104°C
				Locked-rotor Power Factor	50
				Rotor inertia	0.172 LB-FT <sup>2</sup>

Load Characteristics 460 V, 60 Hz, 1.5 HP

% of Rated Load	25	50	75	100	125	150	S.F.
Power Factor	31	49	63	72	77	80	75
Efficiency	70.6	79.3	81.3	80.6	78.6	75.7	79.4
Speed	1186.7	1173	1158.4	1140.3	1121.1	1097.7	1129
Line amperes	1.63	1.81	2.09	2.45	2.92	3.48	2.73

Performance Graph at 460V, 60Hz, 1.5HP Typical performance - Not guaranteed values



**AC Induction Motor Performance Data**

Record # 53824 - Typical performance - not guaranteed values

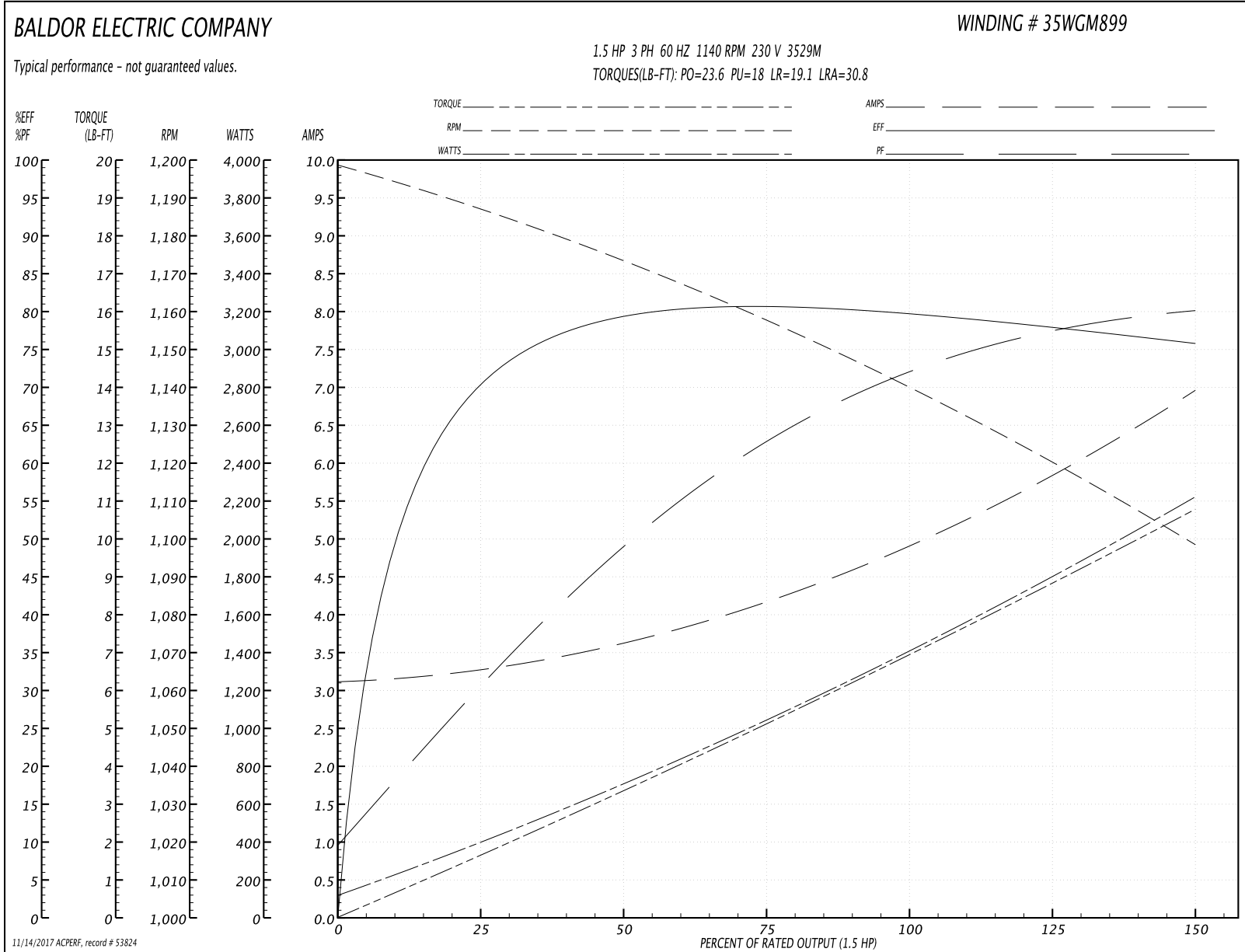
<b>Winding:</b> 35WGM899-R001	<b>Type:</b> 3529M	<b>Enclosure:</b> TEFC
-------------------------------	--------------------	------------------------

Nameplate Data				230 V, 60 Hz: Low Voltage Connection	
Rated Output (HP)	1.5			Full Load Torque	6.97 LB-FT
Volts	208-230/460			Start Configuration	direct on line
Full Load Amps	5-4.9/2.45			Breakdown Torque	23.6 LB-FT
R.P.M.	1140			Pull-up Torque	18 LB-FT
Hz	60	Phase	3	Locked-rotor Torque	19.1 LB-FT
NEMA Design Code	B	KVA Code	K	Starting Current	30.8 A
Service Factor (S.F.)	1.15			No-load Current	3.12 A
NEMA Nom. Eff.	80	Power Factor	72	Line-line Res. @ 25°C	2.75 Ω
Rating - Duty	40C AMB-CONT			Temp. Rise @ Rated Load	84°C
S.F. Amps				Temp. Rise @ S.F. Load	100°C
				Locked-rotor Power Factor	50.2
				Rotor inertia	0.172 LB-FT <sup>2</sup>

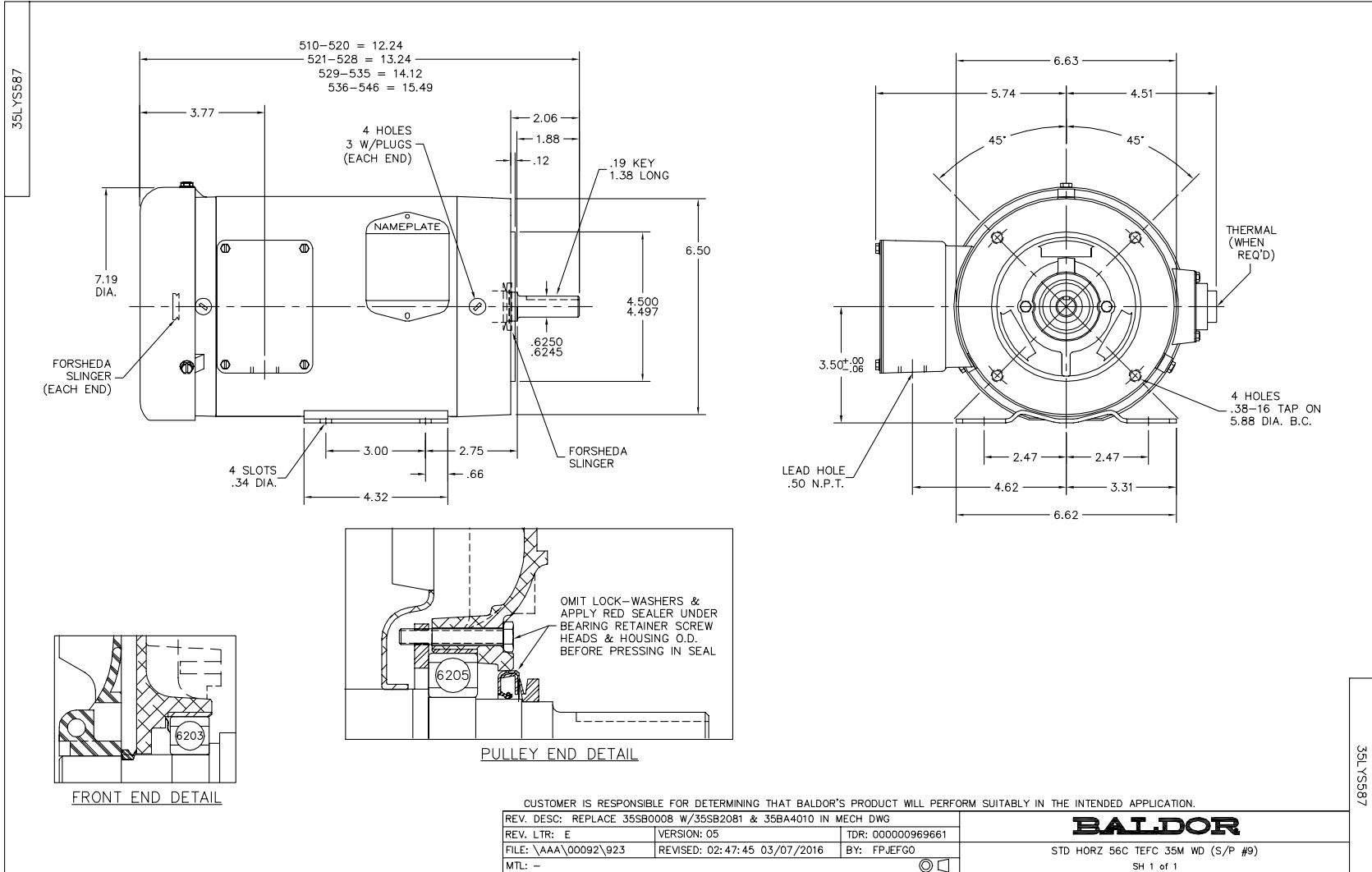
Load Characteristics 230 V, 60 Hz, 1.5 HP

% of Rated Load	25	50	75	100	125	150	S.F.
Power Factor	31	49	63	72	77	80	75
Efficiency	69	78.4	80.3	80.6	78.2	75.5	79.2
Speed	1187	1173	1158	1140	1121	1098	1129
Line amperes	3.26	3.62	4.18	4.9	5.84	6.96	5.46

Performance Graph at 230V, 60Hz, 1.5HP Typical performance - Not guaranteed values



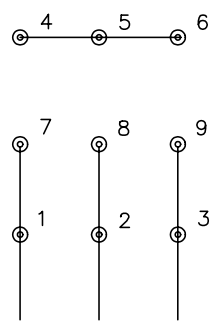




CD0005

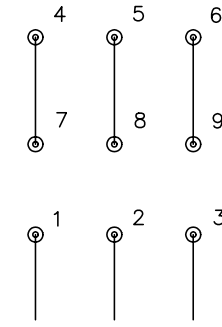


LOW VOLTAGE  
(2Y)



LINE

HIGH VOLTAGE  
(1Y)



LINE

NOTES:

1. INTERCHANGE ANY TWO LINE LEADS TO REVERSE ROTATION.
2. OPTIONAL THERMOSTATS ARE PROVIDED WHEN SPECIFIED.
3. ACTUAL NUMBER OF INTERNAL PARALLEL CIRCUITS MAY BE A MULTIPLE OF THOSE SHOWN ABOVE.
4. LEAD COLORS ARE OPTIONAL. LEADS MUST ALWAYS BE NUMBERED AS SHOWN.

REV. DESC: REVISE TO SHOW OPTIONAL COLORS			
REV. LTR: E	BY: JLP	REVISED: 01/19/99 10:15	TDR: 0171435
9000D		FILE: AAA00005140	MDL: -
		MTL: -	

**BALDOR ELECTRIC Co.**

3PH, DV, 9 LEADS

CD0005