

NOTES, UNLESS OTHERWISE SPECIFIED:

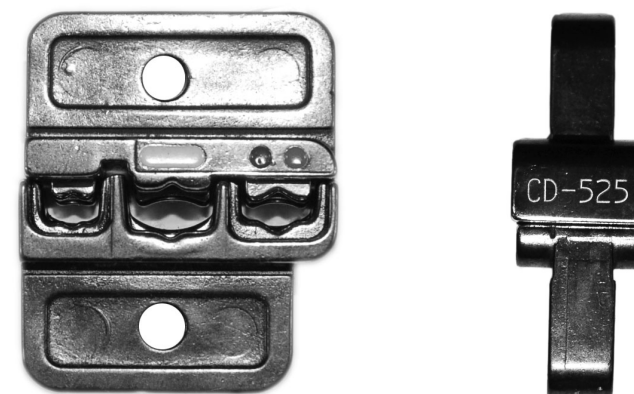
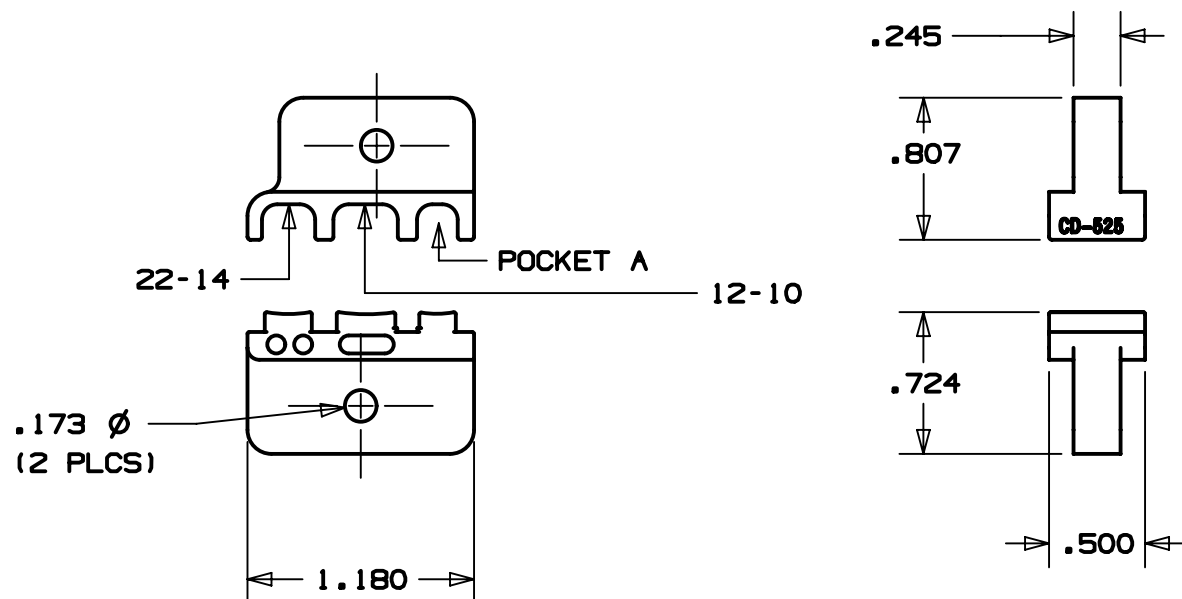
- PART MUST BE RoHS COMPLIANT.
- PANDUIT PART #: CD-525
- DIE SET TO BE LUBRICATED TO PREVENT CORROSION IN TRANSIT.
- DIE INSERT SET WEIGHT: 1.99 OZ. (55.33 GRAMS)
- CT-2525CH OR CD-525:

DIE INSERT OR CRIMPING HEAD (NOT SHOWN) FOR INSTALLING THE FOLLOWING PANDUIT PRODUCTS:
 #26-#22 AWG (0,14-0,5 mm²) INSULATED TERMINALS AND SPLICES,
 #22-#10 AWG (0,5-6,0 mm²) FULLY INSULATED DISCONNECTS, INSULATED PARALLEL SPLICES; AND SPECIFIC #22-#14 AWG (0,5-2,5 mm²) BARREL INSULATED DISCONNECTS.

- DIE INSERT AND/OR THE CRIMPING HEAD (NOT SHOWN) INSTALLATION INSTRUCTIONS CAN BE FOUND AT www.panduit.com, SEARCH FOR CT-2525CH, CT-2550CH, CT-2570CH, CT-2500CH, CD-525, CD-550 OR CD-570.
- USED IN CT-2300 SERIES TOOLS, CT-2500CH AND CT-2525CH CRIMP HEADS.

22-14	12-10	PKT
0,5-2,5	4,0-6,0	A

22-14 12-10 PKT
 0,5-2,5 4,0-6,0 A



POCKET SIZE	SHUT HT. PIN DIA mm [IN]
PKT A	2,29-2,13 [.090-.084]
12-10	2,72-2,57 [.107-.101]
22-14	2,11-1,96 [.083-.077]

NOTE: PIN DIAMETER BASED UPON DIES BEING FULLY CLOSED.

REV	DATE	BY	CHK	APR	DESCRIPTION	ECN
00	10-23-2019	JEH	BJPU	JADE	RELEASED	053328

TITLE		CUST DWG, CD-525 DIE SET	
ITEM REVISION NAME		CUSTOMER DRAWING	
DATASET FILE NAME		R29571BA/00 DS_TP29571B01	
UNLESS OTHERWISE SPECIFIED, DIMENSIONAL TOLERANCES ARE: IN [mm]		PANDUIT	
.X ± - - - .XXX ± .005 [.127]			
.XX ± - - - ANGLE ± - - -		MATERIAL: SEE DRAWING	
THIRD ANGLE PROJECTION		DRAWING NUMBER: TP29571B01	
DRAWN BY	DATE	CHK	SCALE
JEH	10-22-2019	BJPU	NONE
SHT 1 OF 1		SIZE B	