

# Installation Instructions

## K1601WJ2, K1601WJ3, K1601WJ4

### Two-, Three-, and Four-Point Loadbreak Well Junctions

**Contents:** Loadbreak Well Junction assembled with base bracket, Two mounting brackets with hardware, Lubricant Installation Instructions.

The two-, three-, and four-point well junctions are designed for universal mounting on both flat and curved surfaces. The mounting angle of the junction is adjustable from 0° thru 90° above or below the horizontal in 15° increments.

These junctions provide universal interconnected bushing wells for Elastimold bushings thru 25kV class (15.2kV phase-to-ground).

#### DANGER

**All apparatus must be de-energized during installation or removal of part(s).**

**All apparatus must be installed and operated in accordance with individual user, local, and national work rules. These instructions do not attempt to provide for every possible contingency.**

**Do not touch or move energized products.**

**Excess distortion of the assembled product may result in its failure.**

**Inspect parts for damage, rating and compatibility with mating parts.**

FOR MORE INFORMATION ON PARTS, INSTALLATION RATINGS AND COMPATIBILITY, CALL THE NEAREST ELASTIMOLD OFFICE.

**This product should be installed only by competent personnel trained in good safety practices involving high voltage electrical equipment. These instructions are not intended as a substitute for adequate training or experience in such safety practices.**

**Failure to follow these instructions will result in damage to the product and serious or fatal injury.**

**If this product is supplied with a protective shipping cover(s), remove this shipping cover(s) and replace with the appropriate HV insulated cap(s) or connector(s) before submerging or energizing the circuit.**

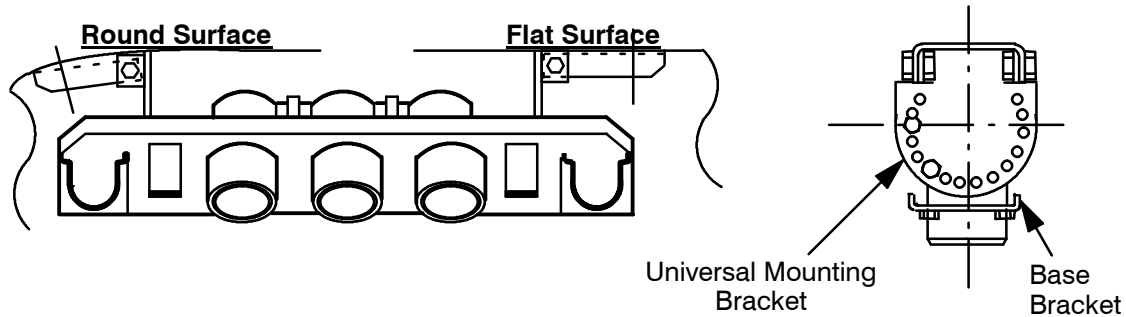
---

#### IMPORTANT

1. Check contents of package to ensure they are complete and undamaged.
  2. Check all components to ensure proper fit with cable and/or mating products.
  3. Read entire installation instructions before starting.
  4. Have all required tools at hand and maintain cleanliness throughout the procedure.
-

## STEP 1

Loosely attach universal mounting brackets to the junction base bracket and place assembly against the wall. Adjust brackets for proper alignment and mark their location on the wall.

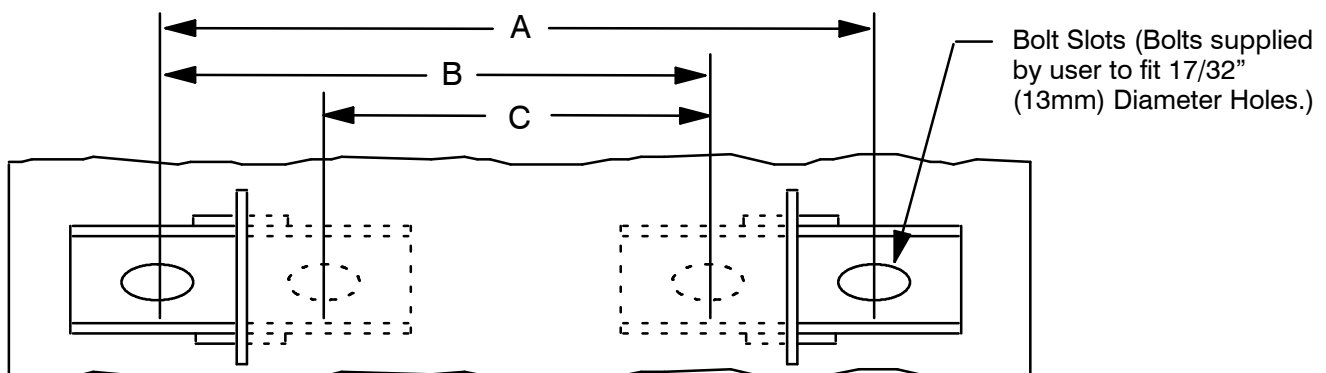


## STEP 2

Detach universal mounting brackets from junction base bracket. Mount brackets on wall according to marks made in Step 1.

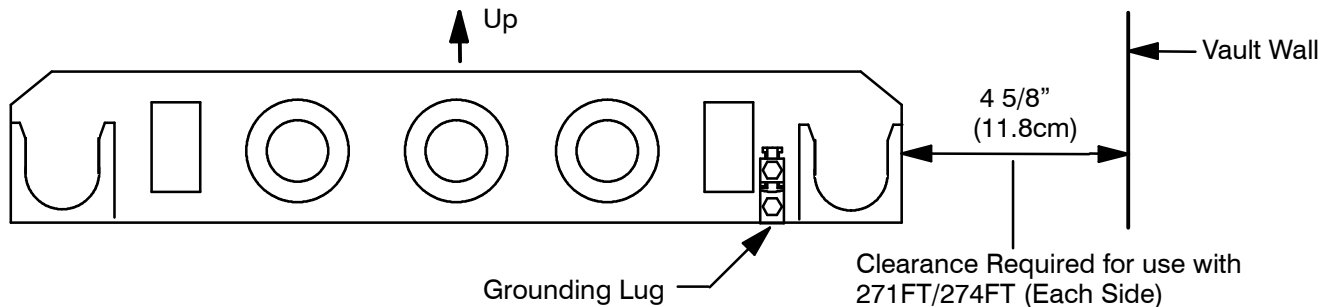
**IMPORTANT:** One or both of the mounting brackets can be inverted to change the distance required between bolt centers. The mounting bracket slot length provides the following dimensional ranges between bolt centers.

Junction Part No.	Mounting Dimensions (Inches)		
	A	B	C
J2	13 1/2 to 16 7/8 34,3cm to 42,9cm	9 1/2 to 13 1/8 24,1cm to 33,3cm	5 1/4 to 9 1/4 13,3cm to 23,5cm
J3	17 1/2 to 20 7/8 45,5cm to 53,0cm	13 1/2 to 17 1/8 34,3cm to 43,5cm	9 1/4 to 13 1/4 23,5cm to 33,7cm
J4	21 1/2 to 24 7/8 54,6cm to 63,2cm	17 1/2 to 21 1/8 44,5cm to 53,7cm	13 1/4 to 17 1/4 33,7cm to 43,8cm



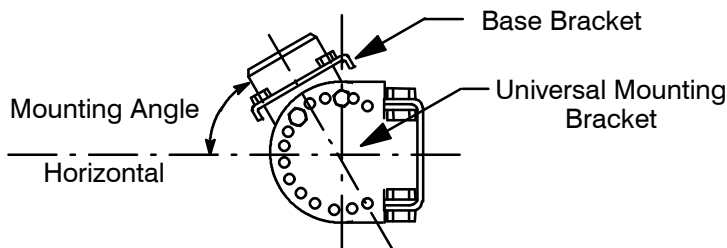
## STEP 3A

With universal mounting brackets secure, fasten base bracket (with junction attached) to mounting brackets, making sure parking stands are in upright position.



## STEP 3B

Adjust mounting angle to desired position.



## STEP 3C

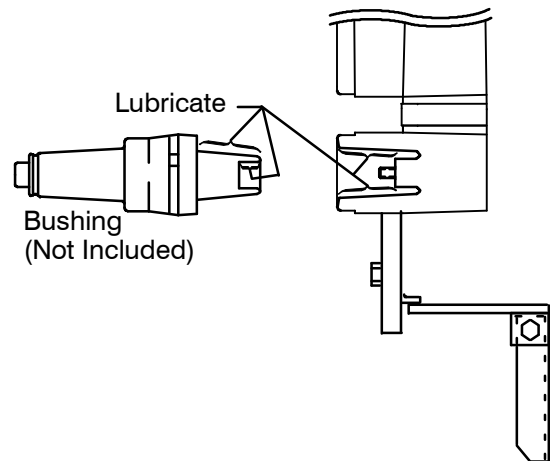
Tighten all bolts securely to assure no movement during operation.

## STEP 3D

Ground base bracket. A grounding lug is provided for this purpose. It accommodates wire sizes of No. 10 Solid to No. 1 Stranded.

## STEP 4

1. Remove the protective caps from the bushing wells.
2. Inspect the bushing wells to ensure they are dry and free from all contaminants. Lubricate the well interface area with supplied lubricant or Elastimold approved lubricants. DO NOT SUBSTITUTE. Other lubricants may be harmful to the product and its mating products.
3. Install the bushings into the wells following the installation instruction included with the bushings.



## OPERATING INSTRUCTIONS

Remove protective shipping caps and clean the operating interfaces. Apply silicone lubricant (DO NOT SUBSTITUTE) before assembly with an ELASTIMOLD product. Refer to operating instructions included with the product you are using.

**WARNING:** IF ALL OPERATING INTERFACES ARE NOT UTILIZED, AN ELASTIMOLD INSULATED CAP OR INSULATED PLUG MUST BE INSTALLED ON THE UNUSED INTERFACE OR INTERFACES BEFORE ENERGIZATION. DO NOT USE the protective shipping covers for this function as they are not insulated and are only intended to keep the operating interface surfaces clean during handling and installation.

**Thomas & Betts**

8155 T&B Boulevard, Memphis, Tennessee 38125  
(800) 888-0211 Fax: (800) 888-0690