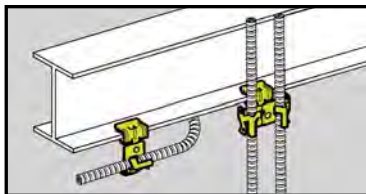


# Beams



- Attaches MC, AC, sizes 14/2 through 10/3 or 3/8" FMC to beam flanges 1/8" to 3/4" thick.
- Fasteners will rotate 360°.
- Simply installed with a hammer.

## Cable To Beam Fasteners



UPC/Part Number	Catalog Number	Types Of Runs	Flange Thickness	Box Qty.
78101101192	<b>BX4-E-2-4</b>	Single	1/8" - 1/4"	100
78101101193	<b>BX4-E-5-8</b>	Single	5/16" - 1/2"	100
78101101194	<b>BX4-E-9-12</b>	Single	9/16" - 3/4"	100



UPC/Part Number	Catalog Number	Types Of Runs	Flange Thickness	Box Qty.
78101101213	<b>BX4M-E-2-4</b>	Double	1/8" - 1/4"	100
78101101214	<b>BX4M-E-5-8</b>	Double	5/16" - 1/2"	100
78101101215	<b>BX4M-E-9-12</b>	Double	5/16" - 3/4"	100

Read safety/installation instruction sheets in packages before use. These products are designed for positioning only. No load rating.