

# **BALDOR**® • ***RELIANCE***

## **Product Information Packet**

# **BM3611T**

**3HP,1750RPM,3PH,60HZ,182T,3622M,TEFC,F1**

Part Detail							
Revision:	D	Status:	INA/A	Change #:		Proprietary:	No
Type:	AC	Elec. Spec:	36WGS914	CD Diagram:	CD0005	Mfg Plant:	
Mech. Spec:	36A021	Layout:	36LYA021	Poles:	04	Created Date:	06-02-2012
Base:	RG	Eff. Date:	03-08-2016	Leads:	9#16		

Specs			
Catalog Number:	BM3611T	Insulation Class:	F
Enclosure:	TEFC	Inverter Code:	Not Inverter
Frame:	182T	KVA Code:	K
Frame Material:	Steel	Lifting Lugs:	No Lifting Lugs
Output @ Frequency:	3.000 HP @ 60 HZ	Locked Bearing Indicator:	No Locked Bearing
Synchronous Speed @ Frequency:	1800 RPM @ 60 HZ	Motor Lead Quantity/Wire Size:	9 @ 16 AWG
Voltage @ Frequency:	208.0 V @ 60 HZ	Motor Lead Exit:	Ko Box
	230.0 V @ 60 HZ	Motor Lead Termination:	Flying Leads
	460.0 V @ 60 HZ	Motor Type:	3622M
XP Class and Group:	None	Mounting Arrangement:	F1
XP Division:	Not Applicable	Power Factor:	72
Agency Approvals:	UR	Product Family:	General Purpose
	CSA	Product Type:	BRAKE MOTOR
Auxillary Box:	No Auxillary Box	Pulley End Bearing Type:	Ball
Auxillary Box Lead Termination:	None	Pulley Face Code:	Standard
Base Indicator:	RG	Pulley Shaft Indicator:	Standard
Bearing Grease Type:	Polyrex EM (-20F +300F)	Rodent Screen:	None
Blower:	None	Shaft Extension Location:	Pulley End

<b>Current @ Voltage:</b>	4.500 A @ 460.0 V	<b>Shaft Ground Indicator:</b>	No Shaft Grounding
	9.000 A @ 208.0 V	<b>Shaft Rotation:</b>	Reversible
	9.000 A @ 230.0 V	<b>Shaft Slinger Indicator:</b>	No Slinger
<b>Design Code:</b>	B	<b>Speed Code:</b>	Single Speed
<b>Drip Cover:</b>	No Drip Cover	<b>Motor Standards:</b>	NEMA
<b>Duty Rating:</b>	CONT	<b>Starting Method:</b>	Direct on line
<b>Electrically Isolated Bearing:</b>	Not Electrically Isolated	<b>Thermal Device - Bearing:</b>	None
<b>Feedback Device:</b>	NO FEEDBACK	<b>Thermal Device - Winding:</b>	None
<b>Front Face Code:</b>	Brake Mounting	<b>Vibration Sensor Indicator:</b>	No Vibration Sensor
<b>Front Shaft Indicator:</b>	None	<b>Winding Thermal 1:</b>	None
<b>Heater Indicator:</b>	No Heater	<b>Winding Thermal 2:</b>	None

Nameplate NP1256L										
CAT.NO.	BM3611T									
SPEC.	36A021S914G1									
HP	3									
VOLTS	208-230/460									
AMP	9/4.5									
RPM	1750									
FRAME	182T				HZ	60			PH	3
SER.F.	1.15		CODE	K	DES	B		CLASS	F	
NEMA-NOM-EFF	85.5		PF	72						
RATING	40C AMB-CONT									
CC	USABLE AT 208V									
DE	6206				ODE	6205				
ENCL	TEFC		SN							

**AC Induction Motor Performance Data**

Record # 38669 - Typical performance - not guaranteed values

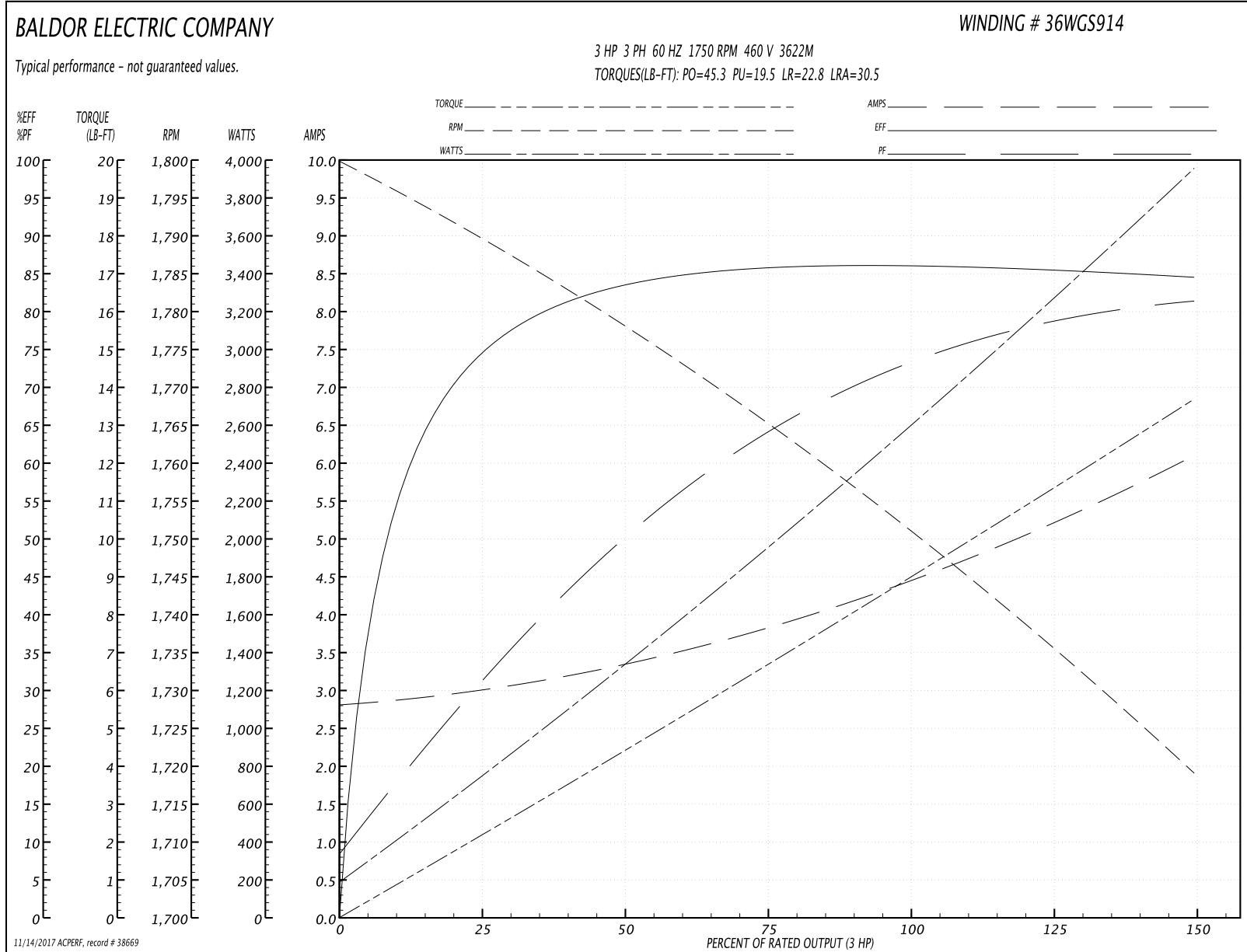
<b>Winding:</b> 36WGS914-R002	<b>Type:</b> 3622M	<b>Enclosure:</b> TEFC
-------------------------------	--------------------	------------------------

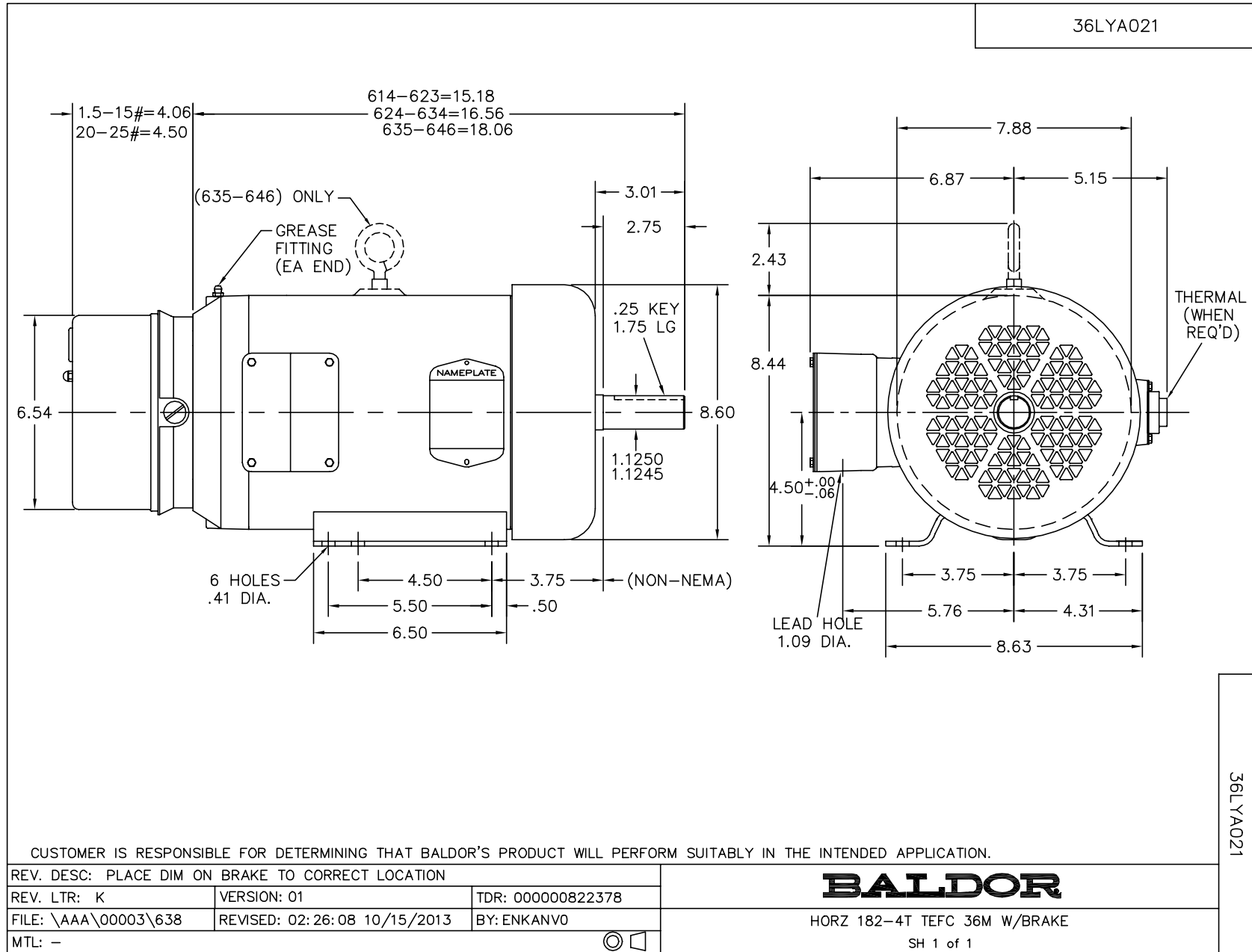
Nameplate Data				460 V, 60 Hz: High Voltage Connection	
Rated Output (HP)	3			Full Load Torque	9.03 LB-FT
Volts	208-230/460			Start Configuration	direct on line
Full Load Amps	9/4.5			Breakdown Torque	45.3 LB-FT
R.P.M.	1750			Pull-up Torque	19.5 LB-FT
Hz	60	Phase	3	Locked-rotor Torque	22.8 LB-FT
NEMA Design Code	B	KVA Code	K	Starting Current	30.5 A
Service Factor (S.F.)	1.15			No-load Current	2.86 A
NEMA Nom. Eff.	85.5	Power Factor	72	Line-line Res. @ 25°C	4.7148 Ω
Rating - Duty	40C AMB-CONT			Temp. Rise @ Rated Load	64°C
S.F. Amps				Temp. Rise @ S.F. Load	75°C

Load Characteristics 460 V, 60 Hz, 3 HP

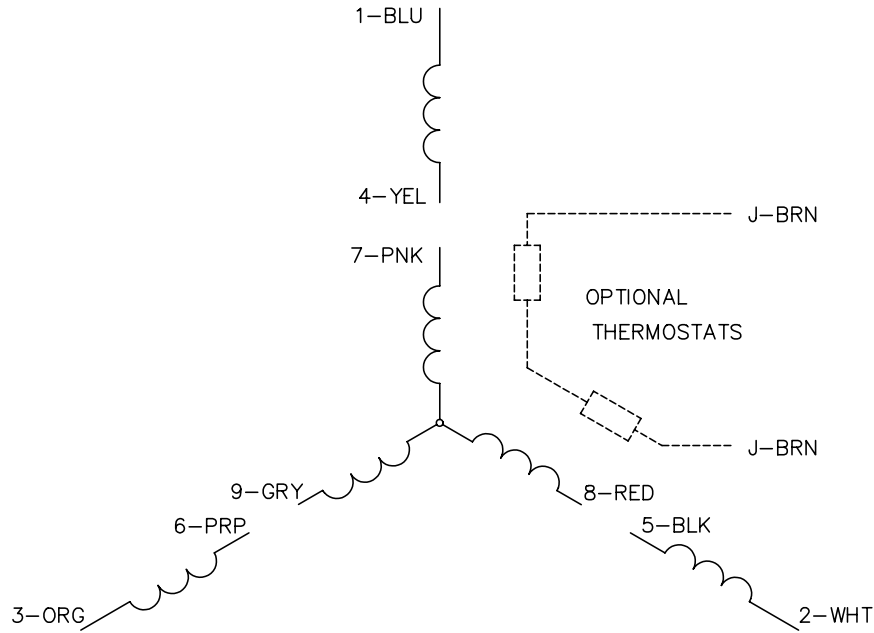
% of Rated Load	25	50	75	100	125	150	S.F.
Power Factor	32	51	65	72	78	82	76
Efficiency	74.4	83.3	85.9	86.1	85.7	84.7	85.9
Speed	1789.6	1777.6	1764.6	1751	1735.5	1718.8	1742
Line amperes	2.95	3.32	3.83	4.54	5.26	6.06	4.97

Performance Graph at 460V, 60Hz, 3.0HP Typical performance - Not guaranteed values

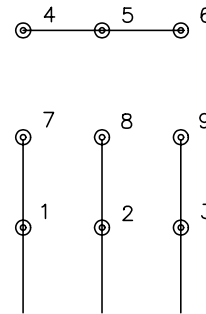




CD0005

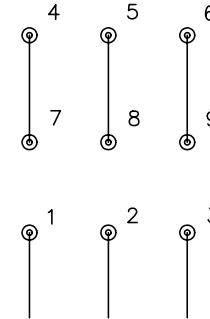


LOW VOLTAGE  
(2Y)



LINE

HIGH VOLTAGE  
(1Y)



LINE

NOTES:

1. INTERCHANGE ANY TWO LINE LEADS TO REVERSE ROTATION.
2. OPTIONAL THERMOSTATS ARE PROVIDED WHEN SPECIFIED.
3. ACTUAL NUMBER OF INTERNAL PARALLEL CIRCUITS MAY BE A MULTIPLE OF THOSE SHOWN ABOVE.
4. LEAD COLORS ARE OPTIONAL. LEADS MUST ALWAYS BE NUMBERED AS SHOWN.

REV. DESC: REVISE TO SHOW OPTIONAL COLORS

REV. LTR: E BY: JLP

REVISED: 01/19/99 10:15

TDR: 0171435

90000

FILE: AAA00005140

MDL: -

MTL: -

**BALDOR ELECTRIC Co.**

3PH, DV, 9 LEADS

CD0005