

Upper Attachments

B3083 - Welded Beam Attachment

B3083W0 - Welded Beam Attachment Without Pin

Size Range: 3/8"-16 thru 2"-4 1/2 rod

Material: Steel (Stainless steel available)

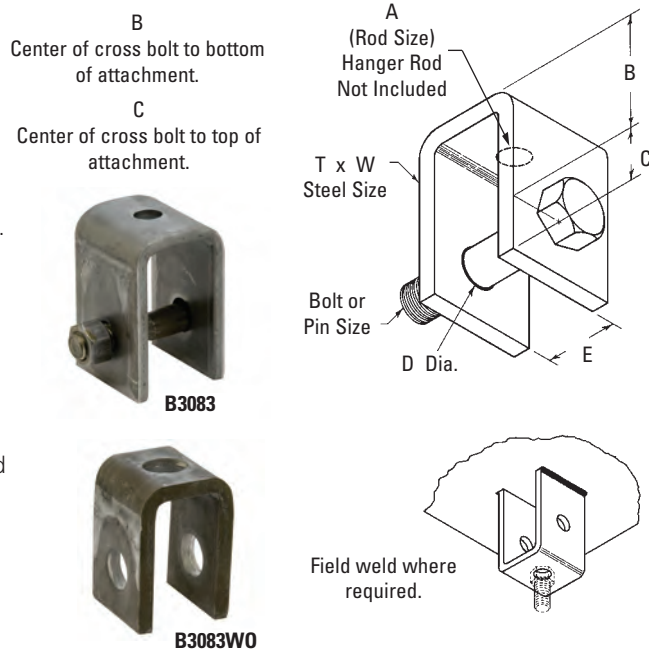
Function: Designed for attaching hanger rod to the bottom of structural steel where heavy loads and large hanger rod sizes are required. Can be welded in place in either the upright or inverted position. When using B3083W0, attach hanger rod to bolt or pin with a B3200 weldless eye nut or B3210 and B3211 series eye rods.

Approvals: Conforms to Federal Specification WW-H-171E & A-A-1192A, Type 22 and Manufacturers Standardization Society ANSI/MSS SP-69 & SP-58, Type 22.

Finish: Plain or Electro-Galvanized. Contact customer service for alternative finishes and materials.

Order By: Part number (with or without hardware) and finish.

Note: When ordering with hardware for sizes 3/8 thru 1 1/8, hex head cap screws and hex nuts will be supplied. For 1 1/4 thru 2, clevis pin and cotter pins will be supplied. Must be specified with or without hardware.



Part No.	Rod Size A	Pin or Bolt Size in. (mm)	Design Load		Approx. Wt./100			
			650° F (349°C) Lbs. (kN)	750° F (399°C) Lbs. (kN)	W/O Hardware Lbs. (kg)		With Hardware Lbs. (kg)	
B3083-3/8	3/8"-16	1/2" (12.7)	730 (3.25)	572 (2.54)	89	(40.3)	110	(49.9)
B3083-1/2	1/2"-13	5/8" (15.9)	1350 (6.00)	1057 (4.70)	87	(39.4)	123	(55.8)
B3083-5/8	5/8"-11	3/4" (19.0)	2160 (9.61)	1692 (7.52)	84	(38.1)	140	(63.5)
B3083-3/4	3/4"-10	7/8" (22.2)	3230 (14.37)	2530 (11.25)	173	(78.4)	268	(121.5)
B3083-7/8	7/8"-9	1" (25.4)	4480 (19.93)	3508 (15.60)	234	(106.1)	376	(170.4)
B3083-1	1"-8	1 1/8" (28.6)	5900 (26.24)	4620 (20.55)	394	(178.6)	596	(270.2)
B3083-1 1/8	1 1/8"-7	1 1/4" (31.7)	7450 (33.14)	5830 (25.93)	402	(182.2)	680	(308.3)
B3083-1 1/4	1 1/4"-7	1 3/8" (34.9)	9500 (42.25)	7440 (33.09)	734	(332.7)	955	(432.9)
B3083-1 1/2	1 1/2"-6	1 5/8" (41.3)	13800 (61.38)	10807 (48.07)	1460	(661.8)	1817	(823.7)
B3083-1 3/4	1 3/4"-5	1 7/8" (47.6)	18600 (82.73)	14566 (64.79)	1746	(791.5)	2310	(1047.1)
B3083-2	2"-4 1/2	2 1/4" (57.1)	24600 (109.42)	19625 (87.29)	2190	(992.7)	2996	(1358.1)

Part No.	B		C		Dia. D		E		T x W	
	in.	(mm)	in.	(mm)	in.	(mm)	in.	(mm)	in.	(mm)
B3083-3/8	2"	(50.8)	7/8"	(22.2)	9/16"	(14.3)	1 1/4"	(31.7)	1/4" x 2"	(6.3 x 50.8)
B3083-1/2	2"	(50.8)	7/8"	(22.2)	1 1/16"	(17.5)	1 1/4"	(31.7)	1/4" x 2"	(6.3 x 50.8)
B3083-5/8	2"	(50.8)	7/8"	(22.2)	1 3/16"	(20.6)	1 1/4"	(31.7)	1/4" x 2"	(6.3 x 50.8)
B3083-3/4	2"	(50.8)	1 1/8"	(28.6)	1 5/16"	(23.8)	1 1/2"	(38.1)	3/8" x 2 1/2"	(9.5 x 63.5)
B3083-7/8	3"	(76.2)	1 1/4"	(31.7)	1 1/8"	(28.6)	2"	(50.8)	3/8" x 2 1/2"	(9.5 x 63.5)
B3083-1	3"	(76.2)	1 1/2"	(38.1)	1 1/4"	(31.7)	2"	(50.8)	1/2" x 3"	(12.7 x 76.2)
B3083-1 1/8	3"	(76.2)	1 1/2"	(38.1)	1 3/8"	(34.9)	2 3/4"	(69.8)	1/2" x 3"	(12.7 x 76.2)
B3083-1 1/4	3"	(76.2)	2"	(50.8)	1 1/2"	(38.1)	3"	(76.2)	5/8" x 4"	(15.9 x 101.6)
B3083-1 1/2	4"	(101.6)	2 1/2"	(63.5)	1 3/4"	(44.4)	3 1/2"	(88.9)	3/4" x 5"	(19.0 x 127.0)
B3083-1 3/4	5"	(127.0)	2 3/4"	(69.8)	2"	(50.8)	3 3/4"	(95.2)	3/4" x 5"	(19.0 x 127.0)
B3083-2	5"	(127.0)	3 1/4"	(82.5)	2 3/8"	(60.3)	3 3/4"	(95.2)	3/4" x 6"	(19.0 x 152.4)

All dimensions in charts and on drawings are in inches. Dimensions shown in parentheses are in millimeters unless otherwise specified.

B3080S - (Short) Structural Welding Lug B3080L - (Long) Structural Welding Lug

Size Range: Short lug is available for use with 1/2"-13 thru 2"-4 1/2 rods; Long lug may be used with 1/2"-13 thru 2"-4 1/2 rod.

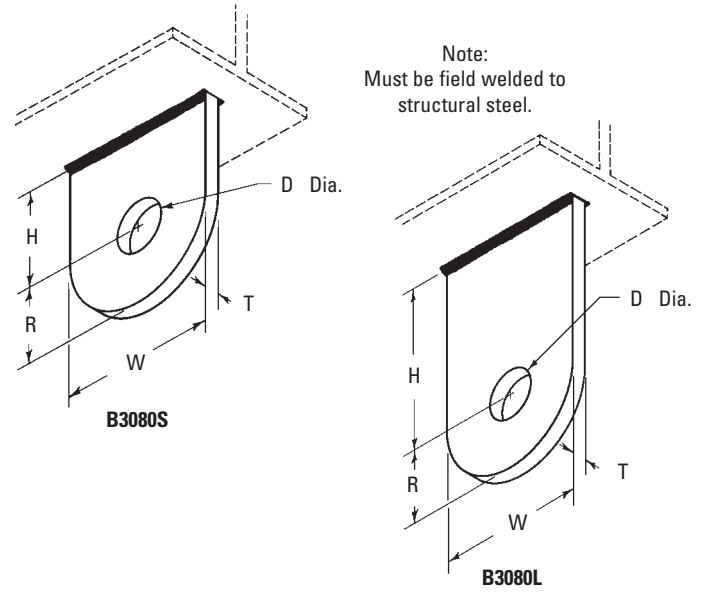
Material: Steel

Function: Designed for attachment to structural steel. Use with B3201 forged steel clevis.

Approvals: Conforms to Manufacturers Standardization Society ANSI/MSS SP-69 & SP-58, Type 57.

Finish: Plain or Electro-Galvanized

Order By: Part number and finish.



Part No.		For Hanger	Pin or Bolt Size in. (mm)	Design Load		Approx. Wt./100			
Short	Long			Lbs.	(kN)	Short		Long	
						Lbs.	(kg)	Lbs.	(kg)
B3080S-1/2	B3080L-1/2	1/2"-13	5/8" (15.9)	1350	(6.00)	44	(19.9)	71	(32.2)
B3080S-5/8	B3080L-5/8	5/8"-11	3/4" (19.0)	2160	(9.61)	44	(19.9)	68	(30.8)
B3080S-3/4	B3080L-3/4	3/4"-10	7/8" (22.0)	3230	(14.37)	63	(28.6)	100	(45.3)
B3080S-7/8	B3080L-7/8	7/8"-9	1" (25.4)	4480	(19.93)	71	(32.2)	100	(45.3)
B3080S-1	B3080L-1	1"-8	1 1/8" (28.6)	5900	(26.24)	126	(57.1)	169	(76.6)
B3080S-1 1/8	B3080L-1 1/8	1 1/8"-7	1 1/4" (31.7)	7450	(33.14)	166	(75.3)	208	(94.3)
B3080S-1 1/4	B3080L-1 1/4	1 1/4"-7	1 3/8" (38.1)	9500	(42.25)	310	(140.6)	381	(172.8)
B3080S-1 1/2	B3080L-1 1/2	1 1/2"-6	1 5/8" (41.3)	13800	(61.38)	503	(228.1)	662	(300.3)
B3080S-1 3/4	B3080L-1 3/4	1 3/4"-5	1 7/8" (47.6)	18600	(82.73)	487	(220.9)	646	(293.0)
B3080S-2	B3080L-2	2"-4 1/2	2 1/4" (57.1)	24600	(109.42)	744	(337.5)	808	(366.5)

Part No.	Hole Dia. 'D'	Short	H	Long	R	T	W
Short	Long	in. (mm)	in. (mm)	in. (mm)	in. (mm)	in. (mm)	in. (mm)
B3080S-1/2	B3080L-1/2	11/16" (17.5)	1 1/2" (38.1)	3" (76.2)	1 1/4" (31.7)	1/4" (6.3)	2 1/2" (63.5)
B3080S-5/8	B3080L-5/8	13/16" (20.6)	1 1/2" (38.1)	3" (76.2)	1 1/4" (31.7)	1/4" (6.3)	2 1/2" (63.5)
B3080S-3/4	B3080L-3/4	15/16" (23.8)	1 1/2" (38.1)	3" (76.2)	1 1/4" (31.7)	3/8" (9.5)	2 1/2" (63.5)
B3080S-7/8	B3080L-7/8	1 1/8" (28.6)	2" (50.8)	3" (76.2)	1 1/4" (31.7)	3/8" (9.5)	2 1/2" (63.5)
B3080S-1	B3080L-1	1 1/4" (31.7)	2" (50.8)	3" (76.2)	1 1/2" (38.1)	1/2" (12.7)	3" (76.2)
B3080S-1 1/8	B3080L-1 1/8	1 3/8" (34.9)	3" (76.2)	4" (101.6)	1 1/2" (38.1)	1/2" (12.7)	3" (76.2)
B3080S-1 1/4	B3080L-1 1/4	1 1/2" (38.1)	3" (76.2)	4" (101.6)	2" (50.8)	5/8" (15.9)	4" (101.6)
B3080S-1 1/2	B3080L-1 1/2	1 3/8" (44.4)	3" (76.2)	4 1/2" (114.3)	2 1/2" (63.5)	3/4" (19.0)	5" (127.0)
B3080S-1 3/4	B3080L-1 3/4	2" (50.8)	3" (76.2)	4 1/2" (114.3)	2 1/2" (63.5)	3/4" (19.0)	5" (127.0)
B3080S-2	B3080L-2	2 3/8" (60.3)	4" (101.6)	4 1/2" (114.3)	3" (76.2)	3/4" (19.0)	6" (152.4)

All dimensions in charts and on drawings are in inches. Dimensions shown in parentheses are in millimeters unless otherwise specified.